

KI **KALAMAZOO**
INDUSTRIES, INC.
KALAMAZOO, MI

PH: (269) 382-2050

www.kalamazooind.com

S10W 10" X 90"
WET BELT SANDER
MANUAL



MADE IN USA

KI **KALAMAZOO** INDUSTRIES, INC. KALAMAZOO, MI



PH: (269) 382-2050

www.kalamazooind.com

WARRANTY

All products are guaranteed for a period of one year from receipt of order to the original purchaser, against defects in material workmanship under normal use. Electric motors are warranted by the motor manufacturer for a period of one year and will be repaired by the nearest motor repair station. If non-repairable, they will be replaced by Kalamazoo Industries.

Please call for instructions (269) 382-2050.

RETURN POLICY

Authorization must be obtained before returning merchandise. Please call our customer service department for a return authorization number (269) 382-2050. Please include with your return a copy of your invoice or packing slip. All material must be new and unused in the original packaging. Material must be sent back prepaid (unless otherwise indicated) by Kalamazoo Industries. Credit upon inspection at Kalamazoo Industries. All returns will be subject to a 10% restock charge. Used merchandise is non-returnable. No returns will be accepted after one year of invoice date.

BELT SANDER SAFETY

- READ THE OPERATING INSTRUCTIONS BEFORE RUNNING MACHINE.
- ALWAYS WEAR SAFETY GLASSES OR A FULL FACE SHIELD FOR PROTECTION.
- KEEP HANDS CLEAR OF THE SANDING AREA.
- NEAR WEAR GLOVES OR LOOSE FITTING CLOTHES WHEN OPERATING THIS MACHINE.
- ALWAYS KEEP HAIR TIED BACK OR COVERED.
- LET MACHINE ROTATION COME TO A FULL STOP BEFORE CHANGING BELT.
- KEEP SAFETY GUARDS IN PLACE. DO NOT ALTER GUARD OR MACHINE IN ANYWAY. ANY ALTERATIONS TO GUARDS OR MACHINE COULD CAUSE SERIOUS INJURY.
- ALL BELT SANDERS SHOULD BE OPERATED IN A WELL-VENTILATED AREA. THE DUST CREATED WHEN SOME MATERIALS ARE SANDED CAN BE HARMFUL. DUST MASKS ARE RECOMMEND AS A PRACTICAL MEAN OF MINIMIZING DUST INHALATION. FUMES FROM OTHER OTHER SOURCES CAN ALSO CAUSES FIRES WHEN INTACT WITH SANDING SPARK.
- SPARKS CREATED BY SANDING SHOULD BE DIRECTED DOWNWARD AND AWAY FROM THE FACE AND BODY. DON NOT GRIND NEAR FLAMMABLE MATERIAL.
- ELECTRIC SANDING MACHINES ARE NOT INTENDED FOR USE IN OR NEAR WATER. THIS INCLUDES AN OPERATOR STANDING ON A WET FLOOR OR WORKING AROUND CONTAINERS OF WATER OR OTHER CONDUCTIVE LIQUIDS.

KI **KALAMAZOO** INDUSTRIES, INC. KALAMAZOO, MI



PH: (269) 382-2050

www.kalamazooind.com

WARNING!

TO REDUCE THE RISK OF FIRE OR SHOCK HAZARD,
DO NOT EXPOSE THIS EQUIPMENT TO RAIN, ANY LIQUID OR MOISTURE.

INSPECTION

If these goods are damaged in transit, the **DELIVERING TRANSPORTATION COMPANY** is required by law to make notation of damages on the freight bill. If in your opinion, there may be concealed damage, they are required to make an inspection after goods are unpacked. Transportation rates are made in proportion to damage. Therefore, the carrier and **NOT** the shipper should be charged with any loss or damage. Any claim should be filled with the delivering **TRANSPORTATION COMPANY. PLEASE DO NOT RETURN GOODS TO US WITHOUT OUR RGA NUMBER AND SHIPPING INSTRUCTIONS.**

NOTE: SEE NEXT PAGE FOR RETURN POLICY AND WARRANTY.

IMPORTANT

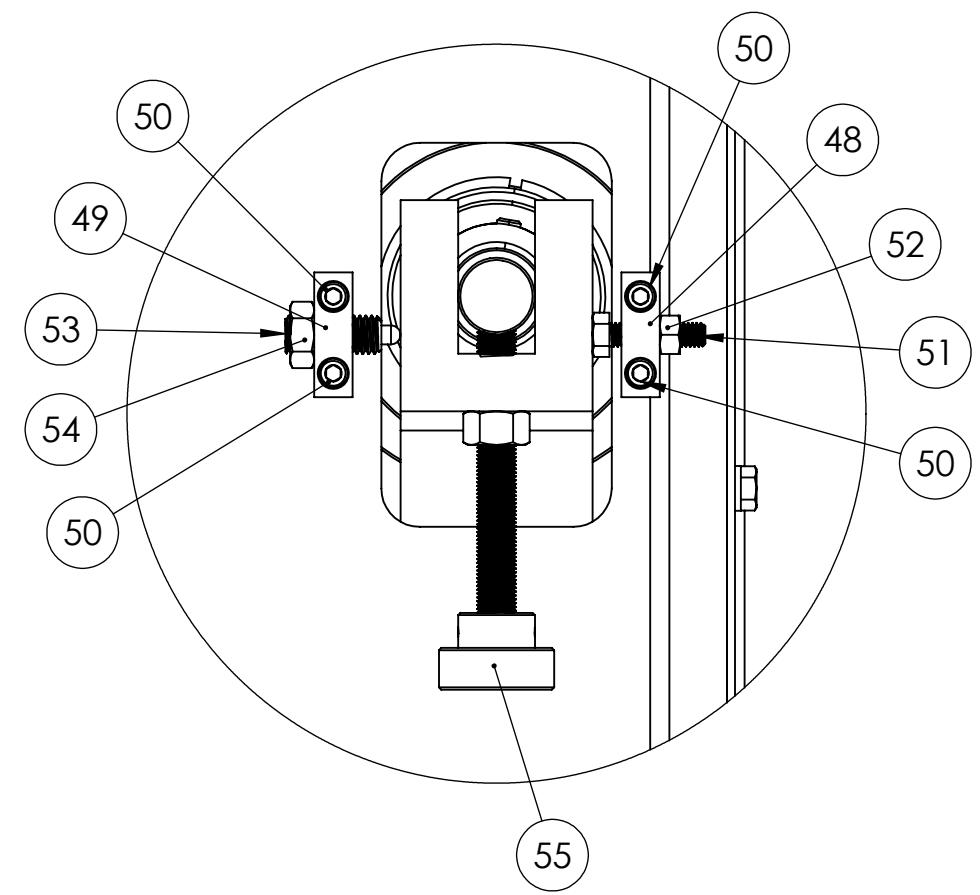
Read Operating Instructions before using equipment.

TROUBLE SHOOTING AND TRACKING PROBLEMS

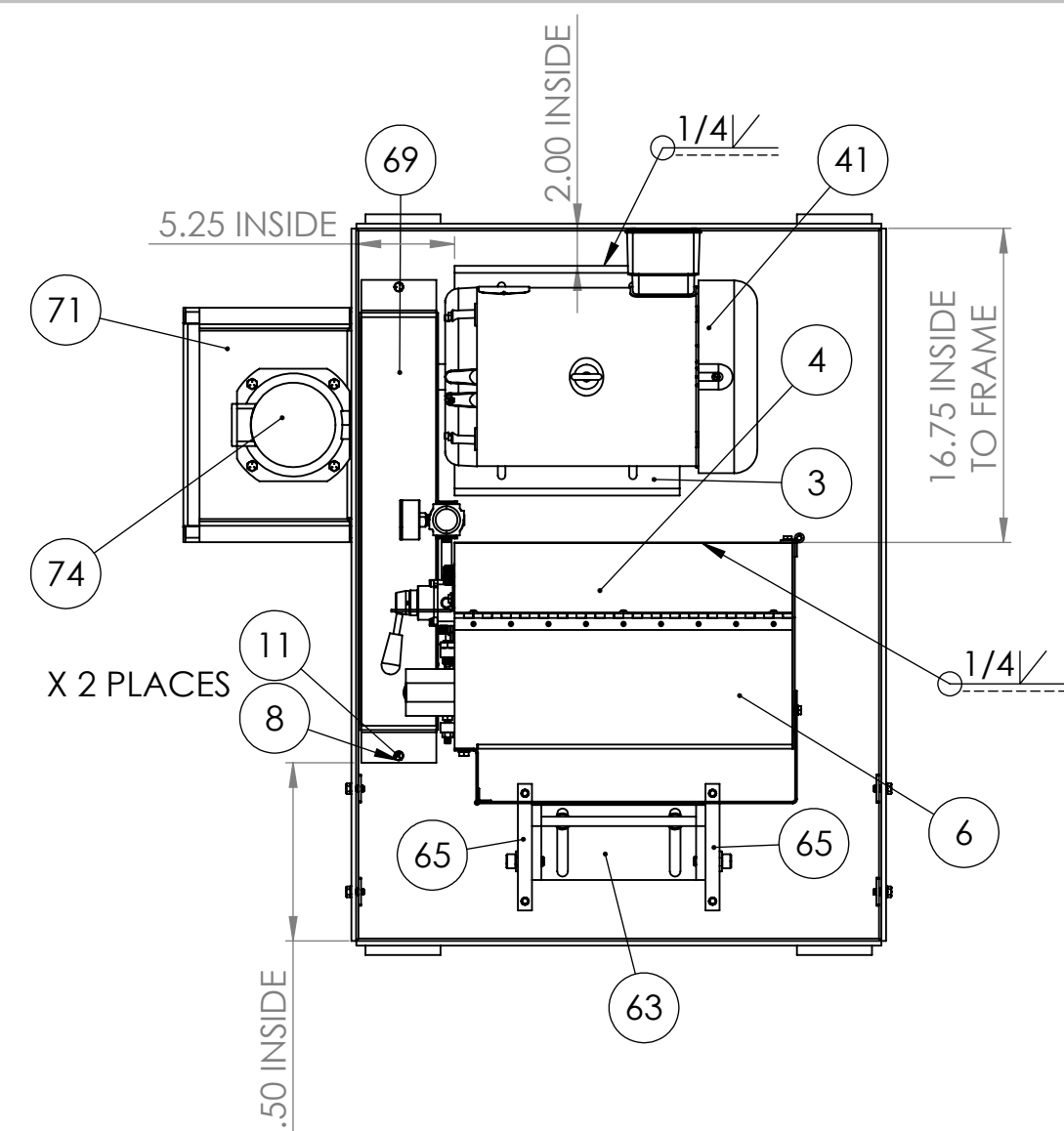
- Drive pulley lost its crown (curvature of pulley)
- Sanding belt are not spliced square.
- Upper pulley assembly not square to platen. (Use carriage bolts to square yoke with platen.)

OPERATING INSTRUCTIONS

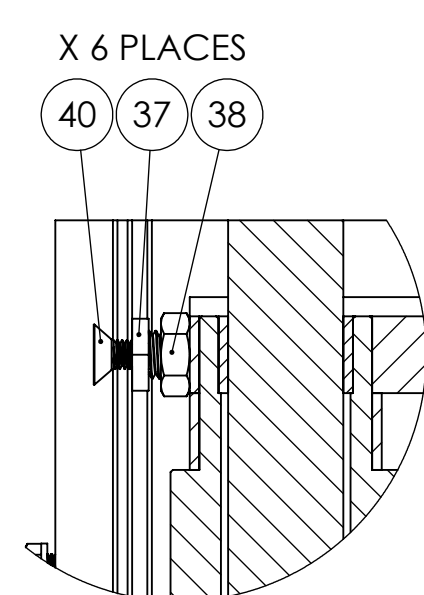
1. CHECK FOR CORRECT OF PHASE AND VOLTAGE BEFORE RUNNING THE MACHIN. **CAUTION: VOLTAGE CHANGES FROM FACTORY SETTING REQUIRE WIRING CHANGES IN ALL MOTOR JUNCTION BOXES AND CORRECT CONTACTOR AND OVERLOAD. IF UNFAMILIAR WITH ELECTRICAL WIRING PLEASE CONSULT AN ELECTRICIAN. ELECTRICAL FAILUTRES DUE TO INCORRECT VOLTAGE CHANGES ARE NOT COVERED UNDER WARRANTY.**
2. BELT TENSION: CONNECT SHOP AIR TO REQUULATOR. USE 40PSI GAUGE PRESSURE FOR SANDING BELT TENNISON. **DO NOT USE OVER 50PSI AIR PRESSURE**, OVER PRESSURE WILL CAUSE SANDING BELT TO STRECH. USE AIR VALVE TO TENSION AND RELEASE TENSION OF SANDING BELT.
3. BELT TRACKING: AFTER TENSIONING THE BELT YOU NEED TO USE THE **JOG** SWITCH AND TRAKING KNOB TO TRACK THE BELT. SEVERAL PUSHES OF THE **JOG** SWITCH MAY BE REQUIRED TO CENTRALIZED THE BELT. WHILE **JOG** SWITCH IS PUSHED IN USING THE TRACKING KNOB TO INCREASE AND DECREASE PULLEY ANGLE. CLOCKWISE TURNING OF KNOB TILTS PULLEY UPWARD AND SANDING BELT AWAY FROM MACHINE FRAME. COUNTER-CLOCKWISE TILTS PULLEY DOWN AND SANDING BELT TOWARD MACHINE FRAME. AFTER BELT HAS BEEN TRACKED VIA **JOG** MODE AND TRACKING KNOB, THE SWITCH MAY THEN BE TURNED TO THE POSITION. **KEEP HANDS CLEAR OF THE BELT WHEN TURNING THE MACHINE ON.**
4. BELT CHANING: TURN THE MACHINE **OFF**, RELEASE AIR PRESSURE WITH CONTROL VALVE. UPPER PULLEY WILL RETRACT TO RELEASE BELT TENSION. OPEN GUARD DOOR AND REMOVE SANDING BELT. REPLEASE WITH NEW BELT. CHECK INSIDE NEW BELT, SOME BELTS WILL HAE ROTATION ARROWS INSIDE. CLOSE DOOR SEURELY. MOVE BELT TENSION CONTROL VALVE TO TENSION THE NEW BELT. USE **JOG** SWITCH TO BE SURE OF TRACKING BEFORE USING START BUTTING TO RUN.
5. WORK TABLE: 8" X 12" CAST IRON WORKTABLE SHOULD BE KEPT WITHIN 1/16" OF SANDING BELT. **(ONLY MODEL S10D & S10W COME WITH WORK TABLE).**
6. Coolant with an anti rust inhibitor in it is required.



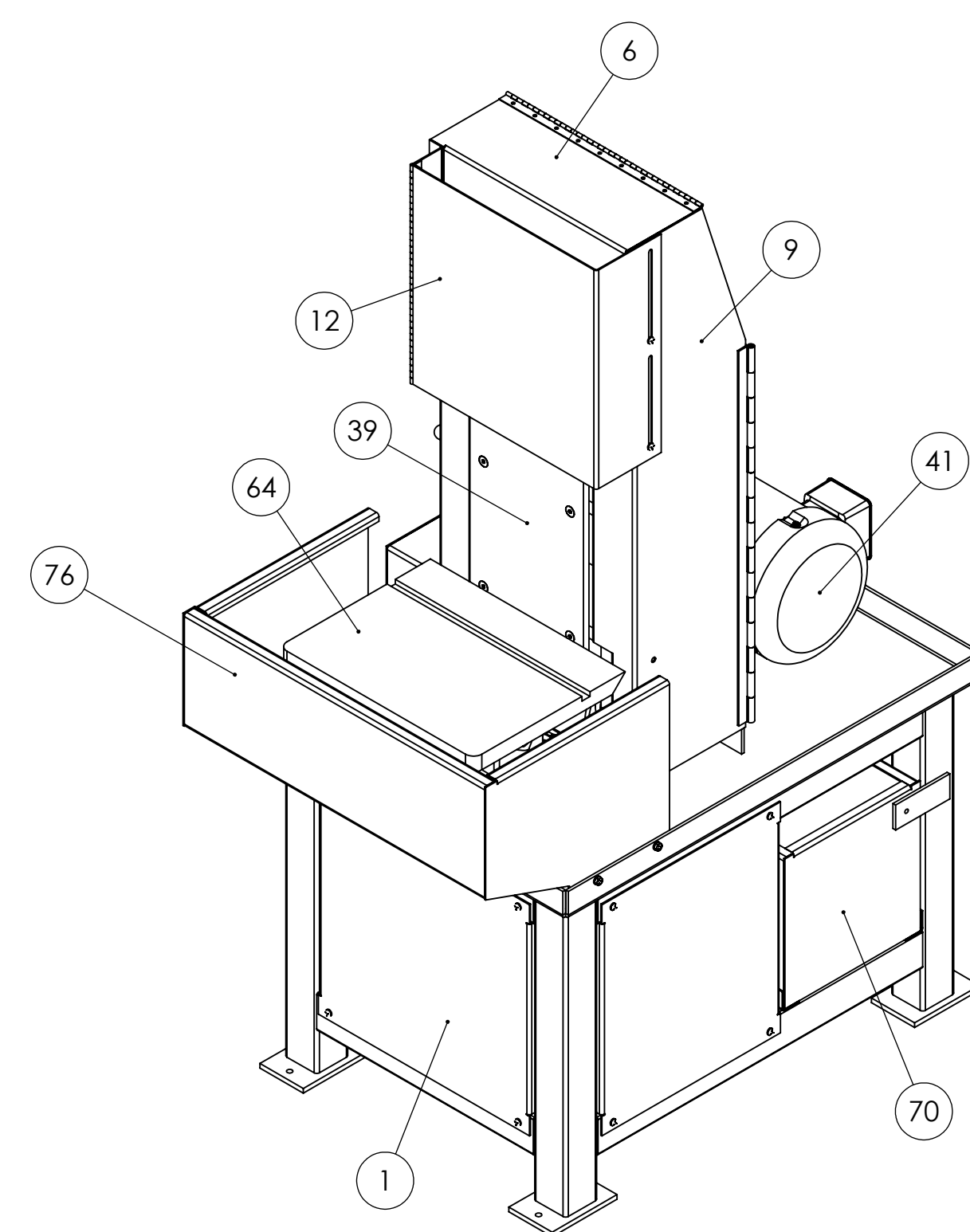
DETAIL A
TRACKING DETAILS



FLOOR PAN, MAIN FRAME
AND MOTOR MOUNT WELDING
LAYOUT



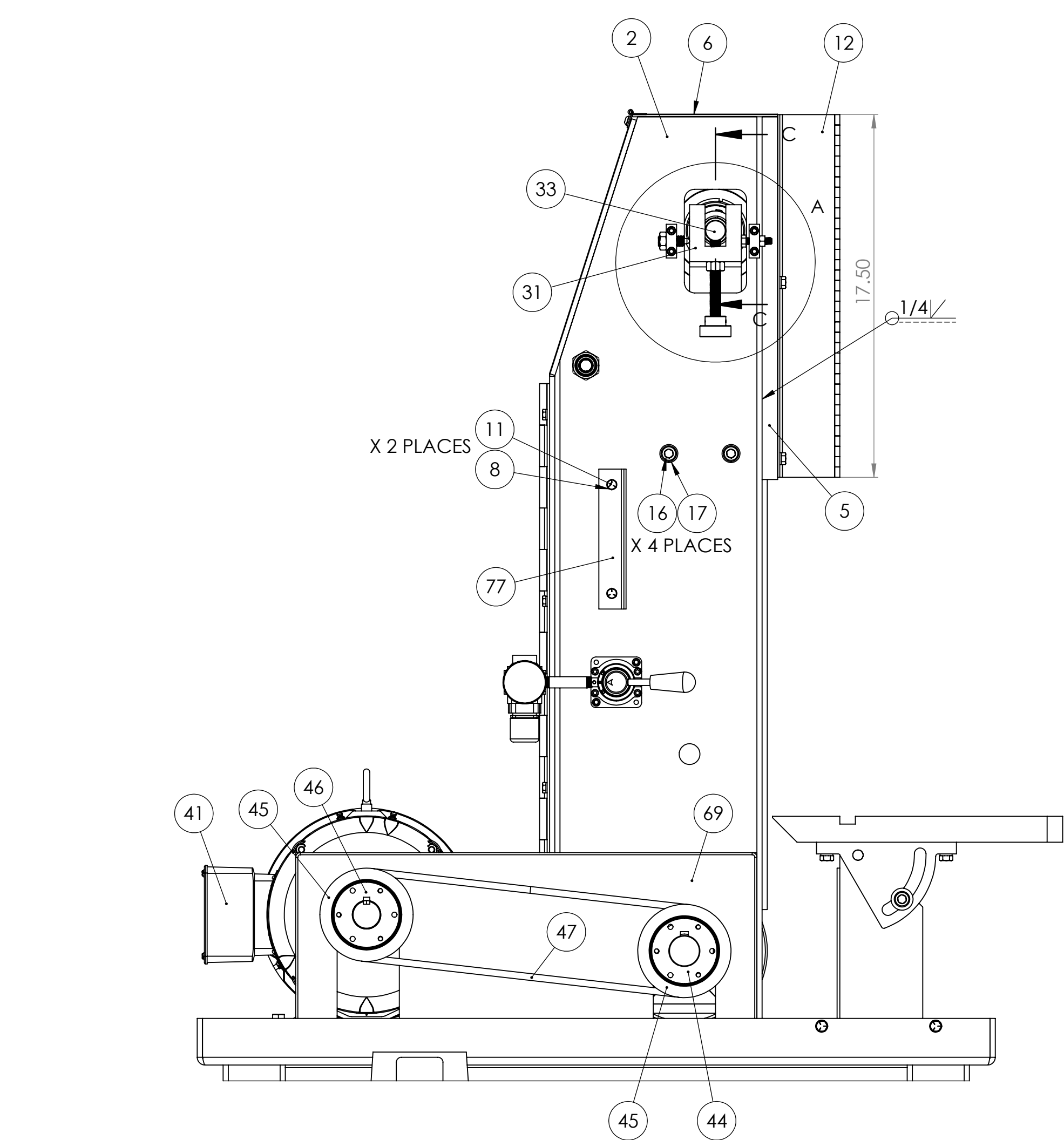
DETAIL E
SCALE 2:5
PLATEN LEVELING
DETAILS



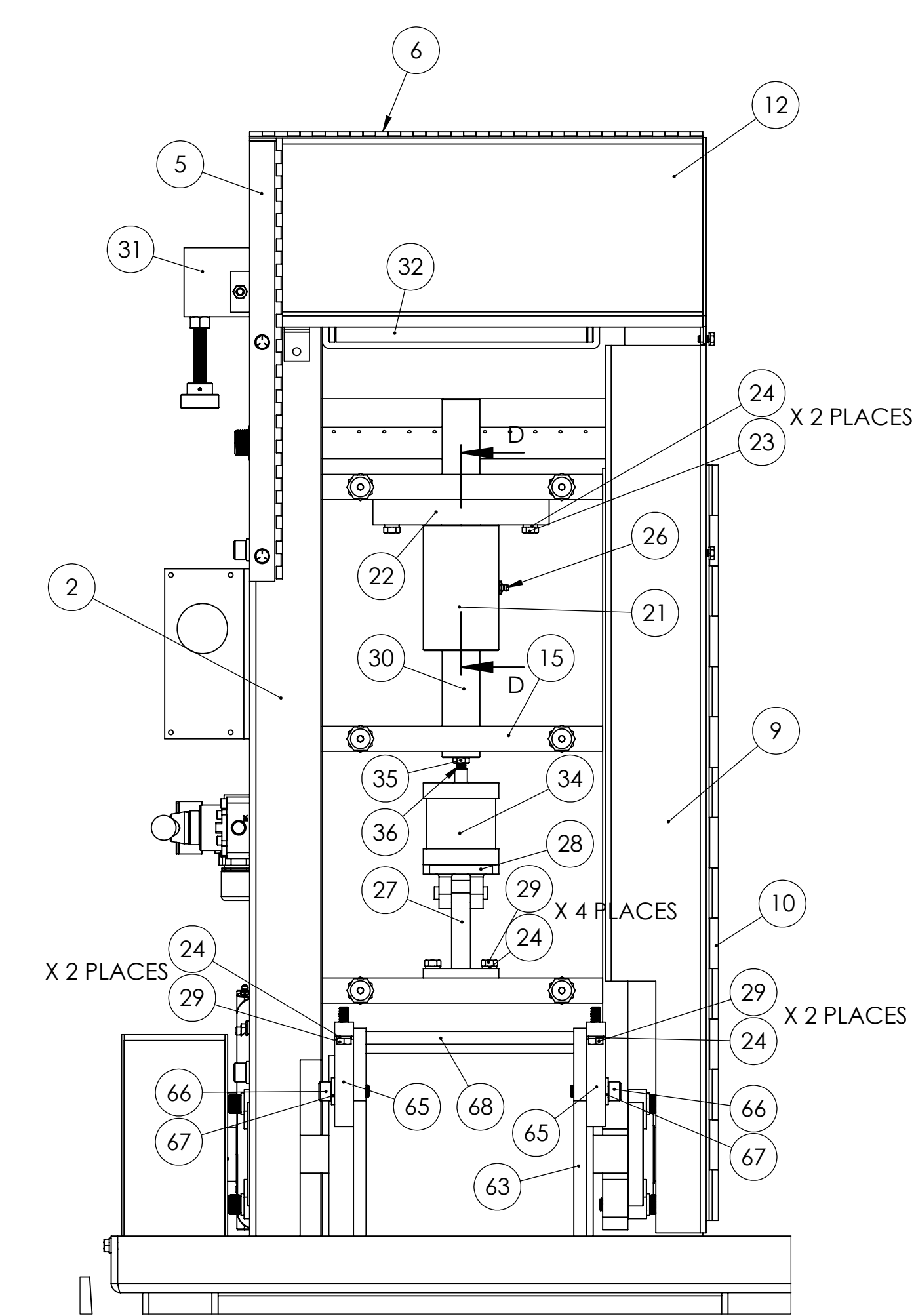
ITEM NO.	PART NUMBER	DESCRIPTION	QTY.
1	716-005W	STAND, FOR S10W SANDER	1
2	125-003VERT	CHANNEL, FRAME SUPPORT FOR S10D AND S10W SANDERS	1
3	556-068	MOTOR PLATE FOR S10D AND S10W SANDERS	1
4	125-003A	BACK GUARD PLATE/FRAE SUPPORT FOR S10D AND S10W SANDERS	1
5	342-153POST	POST FOR S10W UPPER SPLASH GUARD	1
6	342-148W	GUARD, TOP FOR S10W SANDER	1
7	BSCA025008	1/4-20 X 1/2 SHCS	3
8	SLW2025	1/4 SPLIT L/W Z	13
9	147-006W	SIDE DOOR FOR S10W	1
10	147-006HINGE	HINGE FOR S10D SIDE DOOR	1
11	HHC5025008	1/4-20 X 1/2 HHCS GR5 Z	10
12	342-153	UPPER SPLASH GUARD ASSEMBLY FOR S10W	1
13	HHC5031012	5/16-18 X 3/4 HHCS GR5 Z	6
14	SLW2031	5/16 SPLIT L/W Z	10
15	291-032	MAIN FRAME FOR S10D SANDER	1
16	SHCA050028	1/2-13 X 1-3/4 SHCS	4
17	SLW2050	1/2 SPLIT L/W Z	14
18	044-013	4 BOLT FLANGE BRG 1-1/2 IN FOR S10, S14 DRIVE PULLEY	2
19	SHCA050032	1/2-13 X 2 SHCS	8
20	560-055	DRIVE PULLEY ASSEMBLY FOR S10 SANDERS	1
21	714-005	SLEEVE, YOKE SHAFT FOR S10, S14	1
22	556-047	PLATE, SLEEVE BUSHING FOR S10 AND S14	1
23	HHC5037032	3/8-16 X 2 HHCS GR5 Z	2
24	SLW2037	3/8 SPLIT L/W Z	12
25	RLB AA-1704-15	AA-1704-15 BRONZE BUSHING 1-1/2 X 1-3/4 X 1	2
26	ZERK012000	1/8-27 X 11/16 STRT LUBE FITTING	1
27	041-119	T-BRACKET, FOR CYLINDER PIVOT ON S10D	1
28	151-003	CLEVIS, AIR CYLINDER FOR S10 SANDER	1
29	HHC5037020	3/8-16 X 1-1/4 HHCS GR5 Z	10
30	700-031	SHAFT, YOKE FOR S10 SANDERS	1
31	960-018	YOKE FOR S10D SANDERS	1
32	560-054	IDLER PULLEY W BEARINGS FOR S10D SANDERS	1
33	701-042	SPINDLE, IDLER FOR S10D SANDERS	1
34	131-010	MINI PAK CYLINDER FOR S8, S10 SANDERS	1
35	FJNZ038	3/8-24 F H JAM NUT	1
36	709-010A	3/8-24 X 1-1/4 STUD FOR S8D SANDERS	1
37	696-018	SCREW, LEVELING FOR S14 SANDERS	6
38	FJNZ062	5/8-11 F H JAM NUT Z	6
39	563-025	PLATEN FOR S10D SANDERS	1
40	FSCA037016	3/8-16 X 1 FSHCS	6
41	486-040	10HP MOTOR FOR S10 SANDERS	1
42	UFW2037	3/8 USS F/W Z	4
43	FHN5037	3/8-16 FHN GR5 Z	4
44	049-069	MOTOR AND SPINDLE PULLEY BUSHING FOR S10 AND S14 SANDERS	1
45	560-058	SPINDLE PULLEY SHEAVE FOR K20SF-20HP AND KM20-22/20HP, MOTOR AND SPINDLE PULLEY SHEAVE FOR S10 AND S14 SANDERS	2
46	049-003	MOTOR PULLEY BUSHING FOR FOR K16-18, KM16-18, K20SF-15, K20RS-15, K20SW-15, KM20-22-15HP, KM20-22W-15 FOR K16-18, KM16-18, K20SF-15, K20RS-15, K20SW-15, KM20-22-15HP, KM20-22W-15	1
47	051-010	V-BELT FOR S10D AND S10W	4
48	053-009	TRACKING BLOCK- 5/16 THREADED HOLE	1
49	053-009B	TRACKING BLOCK- 1/2-13 THREADED HOLE	1
50	SHCA025016	1/4-20 X 1 SHCS	4
51	HHC5031020	5/16-18 X 1-1/4 HHCS GR 5 Z	1
52	FHN5031	5/16-18 FHN GR5 ZINC	5
53	SPPA050020	1/2-13 X 1-1/4 SPRING PLUNGER W BROWN DELRIN NOSE ALLOY	1
54	FJNZ050	1/2-13 F H JAM NUT Z	1
55	441-016ASSY	TRACKING KNOB ASSEMBLY FOR S8 AND S10 SANDERS	1
56	912-014	VALVE, ROTARY HAND VALVE	1
57	SHCA025024	1/4-20 X 1-1/2 SHCS	2
58	02530040BLN	02530040BLN 1/4 X 3 BLACK PIPE NIPPLE	1
59	R72G2AKRMN	1/4" REGULATOR	1
60	18-013-212	18-013-212 1.5- 1/8 CBM-O-160	1
61	HHC5050024	1/2-13 X 1-1/2 HEX HEAD CAP SCREW	2
62	FHN5050	1/2-13 FHN GR5 Z	2
63	711-013	SUPPORT, TABLE S10 AND S14 SANDERS	1
64	829-023	TABLE, WORK FOR S10 AND S14 SANDERS	1
65	831-014	TRUNNION, TABLE FOR S14 SANDERS	2
66	SHCA050024	1/2-13 X 1-1/2 SHCS	2
67	UFW2050	1/2 USS F/W Z	2
68	RND-0.5CF1018X10.75	10-3/4 INCHES OF 1/2 RND CRS C1018	1
69	342-149	GUARD, BELT FOR S10 HORIZONTAL SANDERS	1
70	716-035	18 GALLON COOLANT TANK 1/4 TO 1/2 I.P. COOLANT PUMP MOUNTING BRACKET FOR WET SANDERS	1
71	041-114	SWITCH BRACKET FOR E2PB BUTTON ENCLOSURE	1
72	HHC5031016	5/16-18 X 1 HHCS GR5 Z	4
73	UFW2031	5/16 USS F/W Z	4
74	577-002	1/4HP COOLANT PUMP AND MOTOR	1
75	S10 SERIES SPLASHBAR	SPLASH BAR FOR S10W SANDER	1
76	342-152	SPLASH GUARD ASSEMBLY FOR S10W	1
77	041-112	SWITCH BRACKET FOR E2PB BUTTON ENCLOSURE	1

DRIVE PULLEY 560-055 INCLUDES:
(1) SHAFT 701-043
(1) BUSHING 049-011

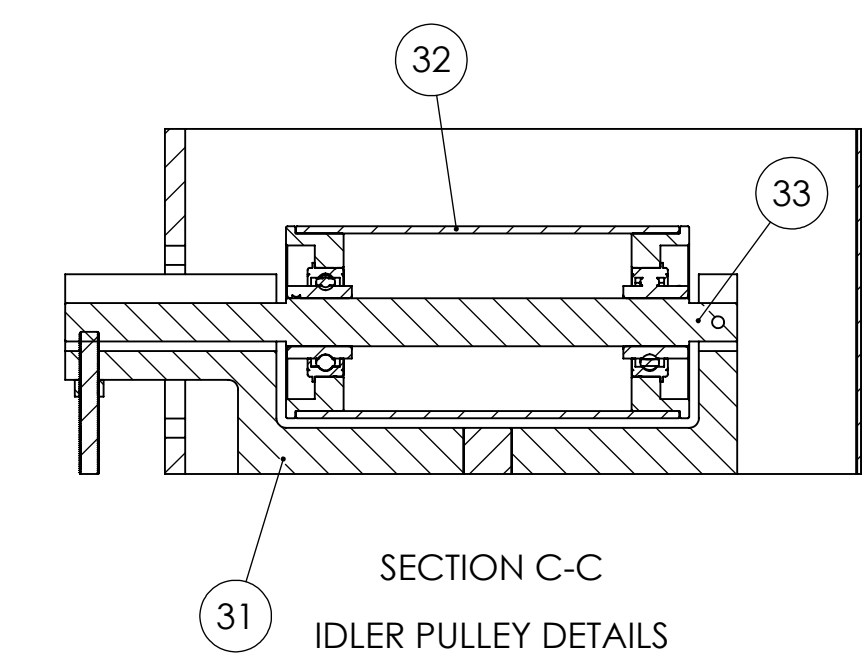
IDLER PULLEY 560-054 INCLUDES:
(2) BEARING 044-014



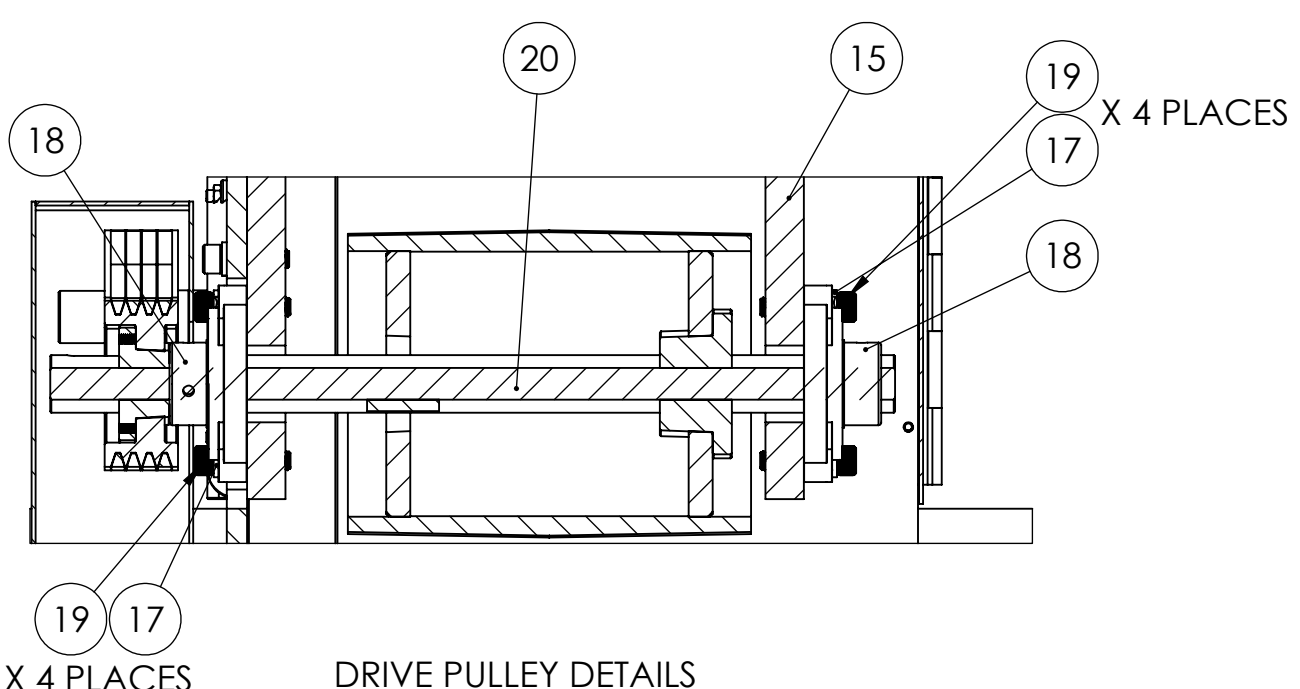
INTERIOR VIEW OF
BELTS AND PULLEYS



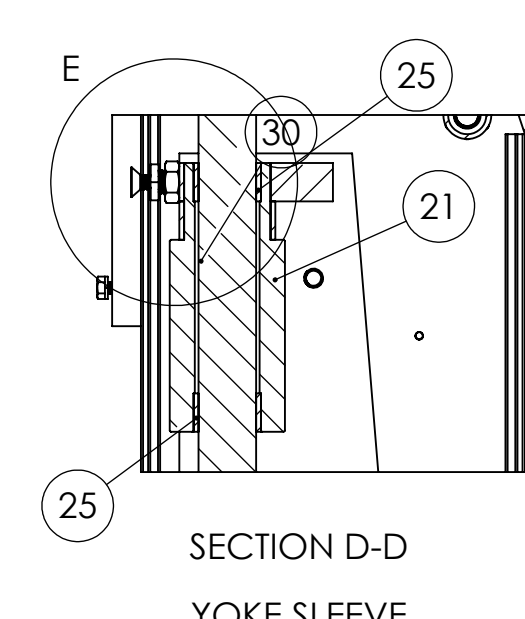
INTERIOR FRONT VIEW
OF MAIN FRAME



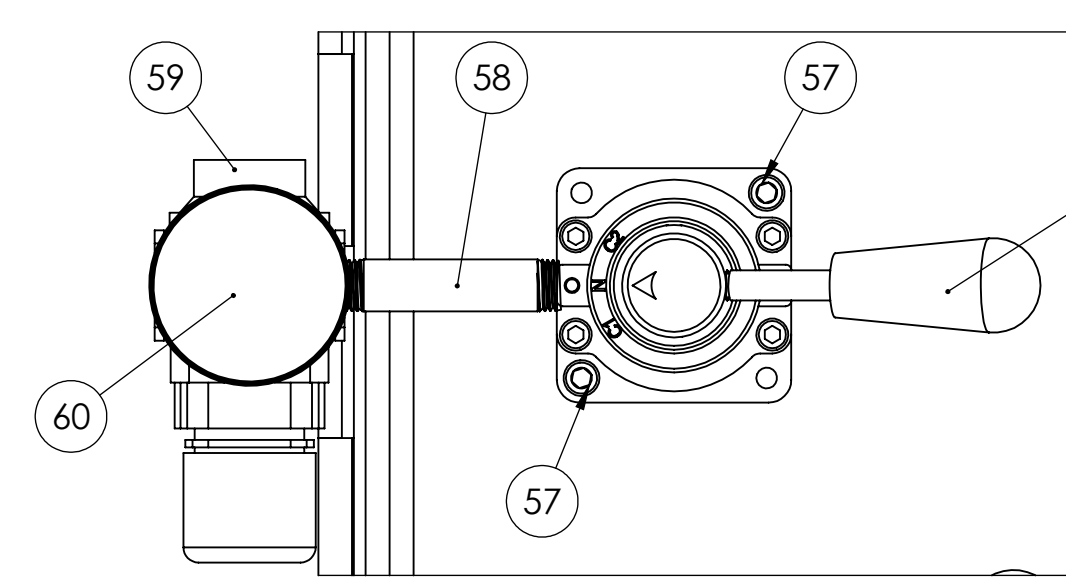
SECTION C-C
IDLER PULLEY DETAILS



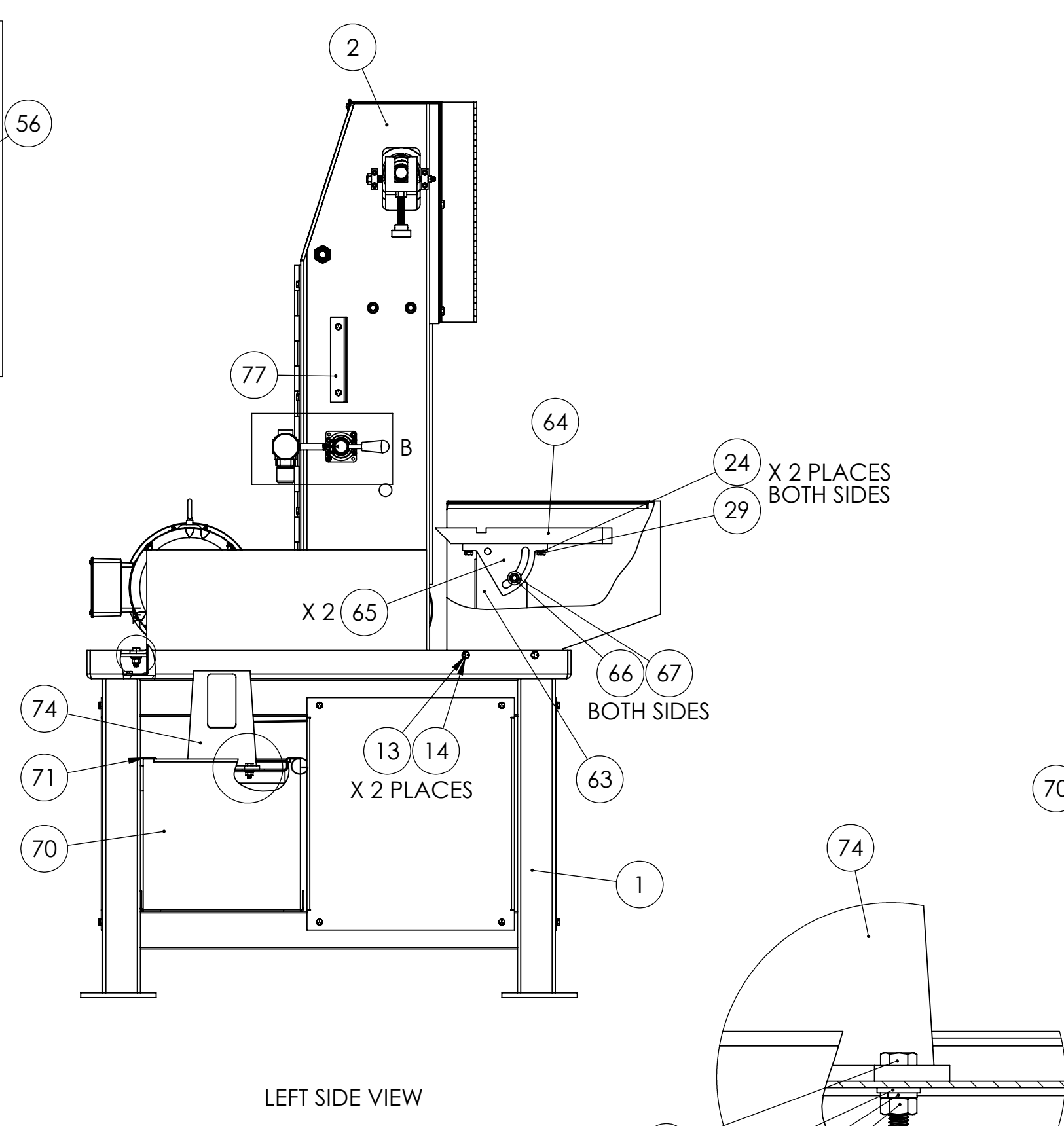
DRIVE PULLEY DETAILS



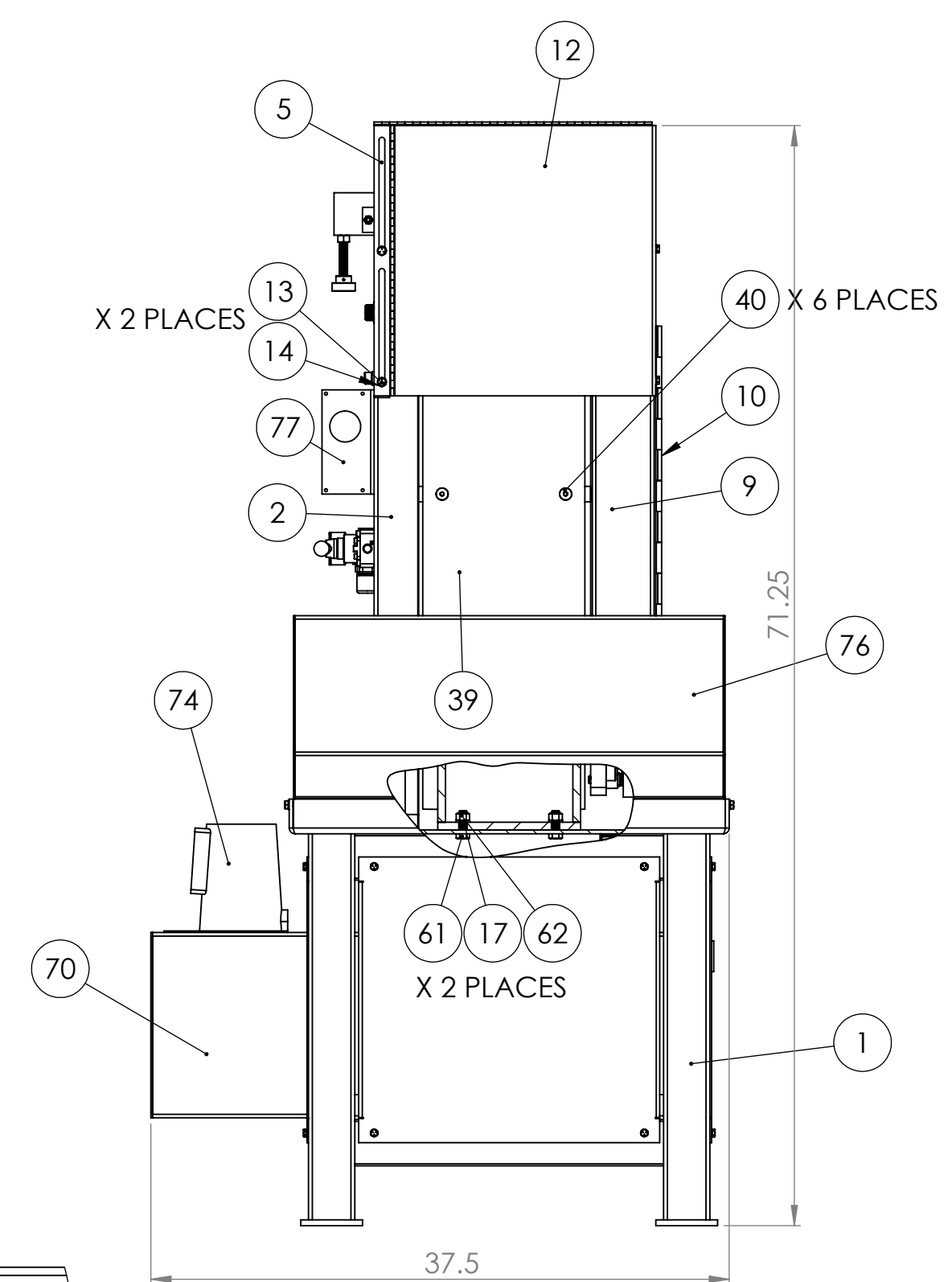
SECTION D-D
YOKE SLEEVE
DETAILS



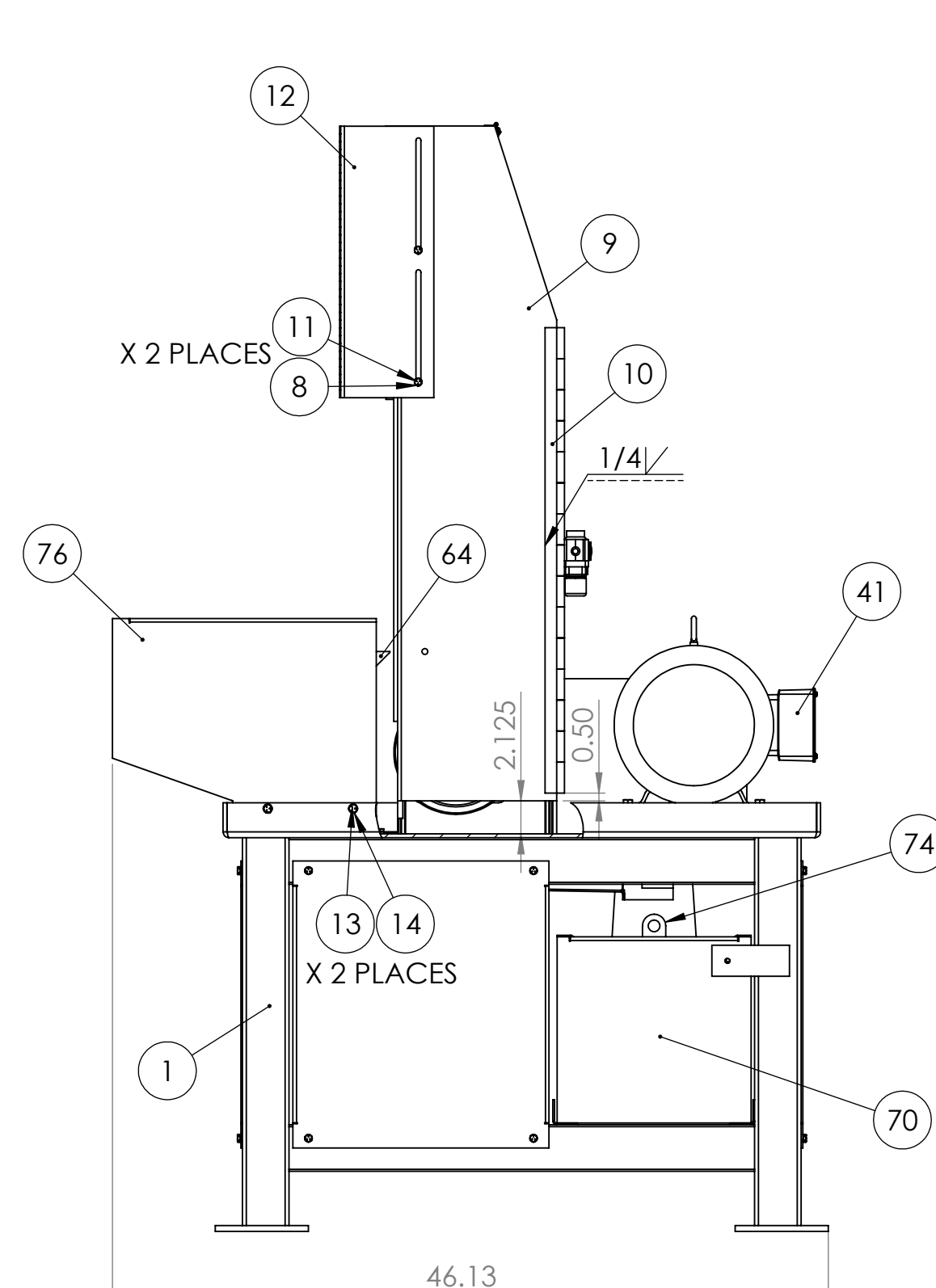
DETAIL B
PNEUMATIC DETAILS
SCALE 1:2



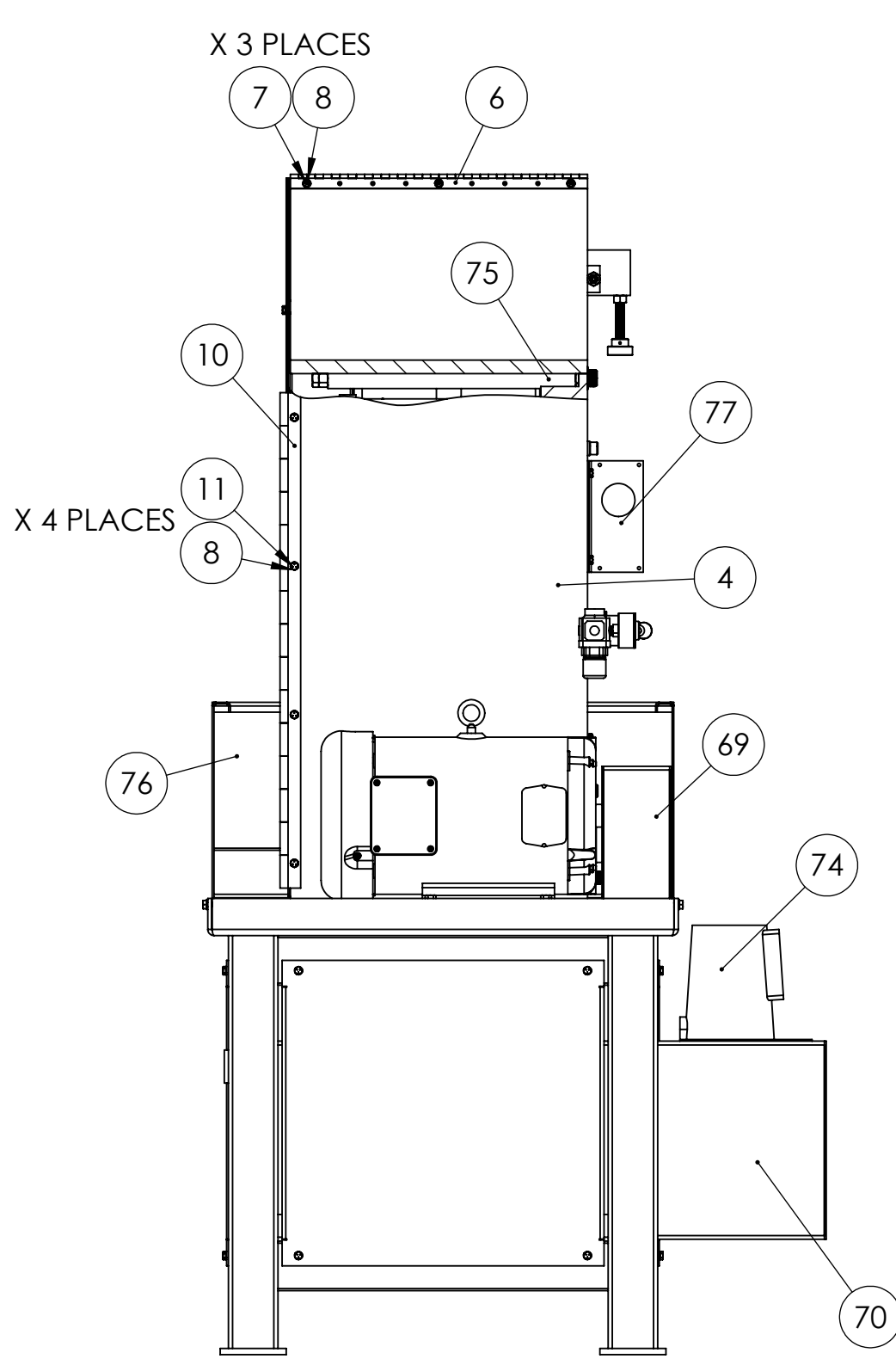
LEFT SIDE VIEW



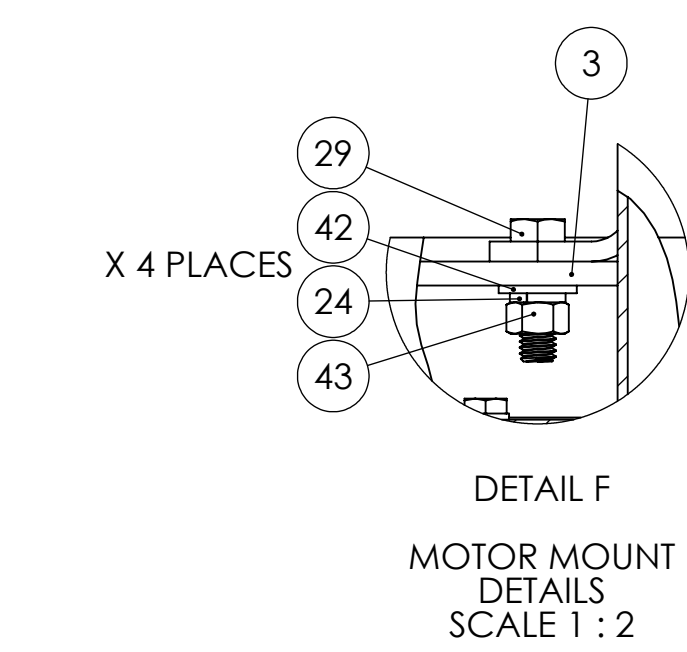
FRONT VIEW



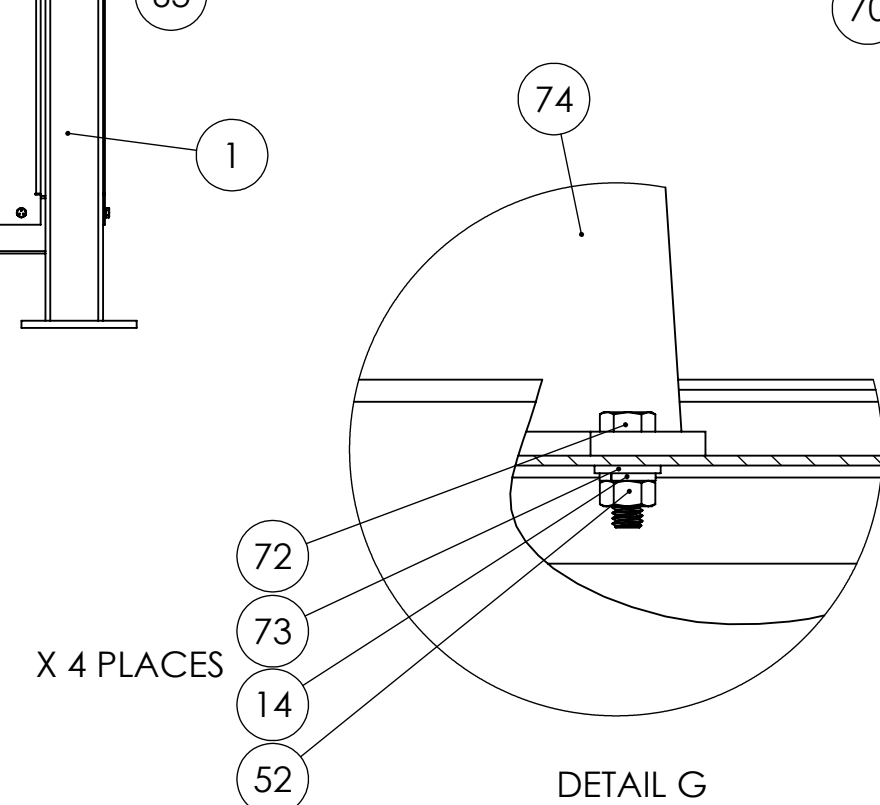
RIGHT SIDE VIEW



BACK VIEW



DETAIL F
MOTOR MOUNT
DETAILS
SCALE 1:2



DETAIL G
COOLANT PUMP
MOUNT DETAILS
SCALE 1:2

PROPRIETARY AND CONFIDENTIAL
THIS INFORMATION CONTAINED IN THIS
DRAWING IS THE PROPERTY OF
KALAMAZOO TOOL COMPANY AND IS NOT TO BE
REPRODUCED IN ANY MANNER WITHOUT THE
WRITTEN PERMISSION OF KALAMAZOO TOOL
COMPANY. ANY VIOLATION OF THIS
STATEMENT WILL BE PROSECUTED TO THE
FULL EXTENT OF THE LAW.

UNLESS OTHERWISE SPECIFIED:	NAME	DATE
DIMENSIONS ARE IN INCHES FRACTIONS ARE IN 16THS ANGULAR DIMS. BEND 1 THREE PLACE DECIMAL TOLERANCES PER ASME Y14.5	DRAWN CHECKED ENG APPR MFG APPR	
INTERFERE GEOMETRIC TOLERANCES PER ASME Y14.5	D.A. COMMENTS:	
NEET KEY	USED ON	FINISH
APPLICATION	DO NOT SCALE DRAWING	

KALAMAZOO
TITLE: S10W 10" VERTICAL WET SANDER
SIZE: DWG. NO. E S10W
SCALE: 1:5 WEIGHT: SHEET 1 OF 1