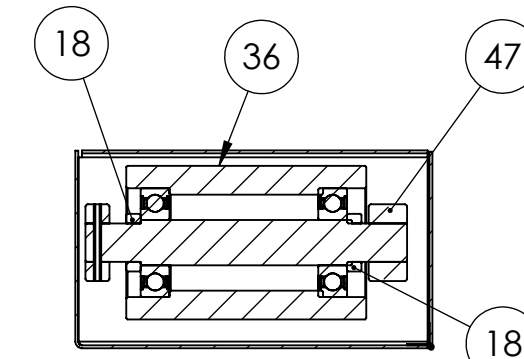
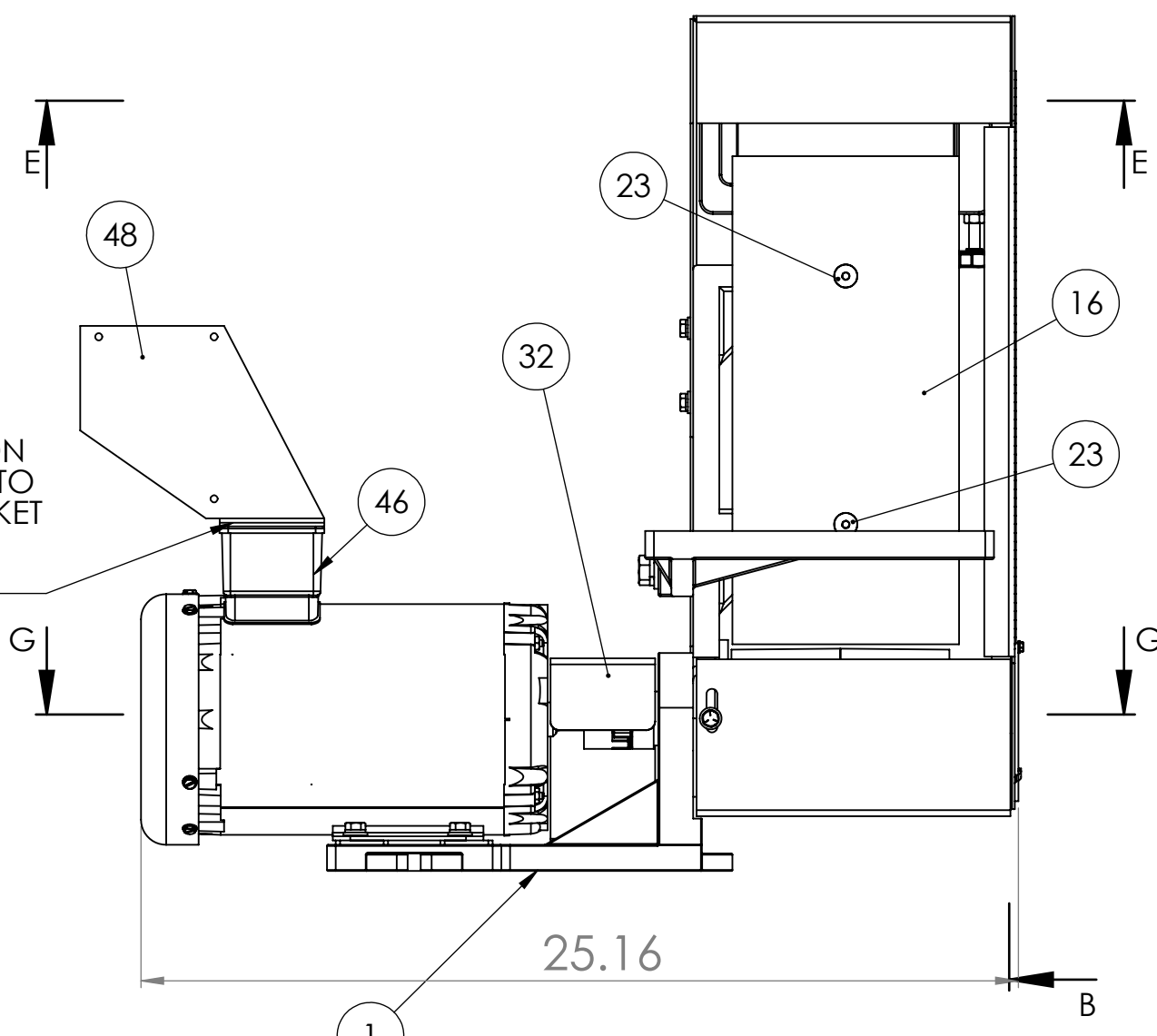


DETAIL D
SCALE 1 : 2

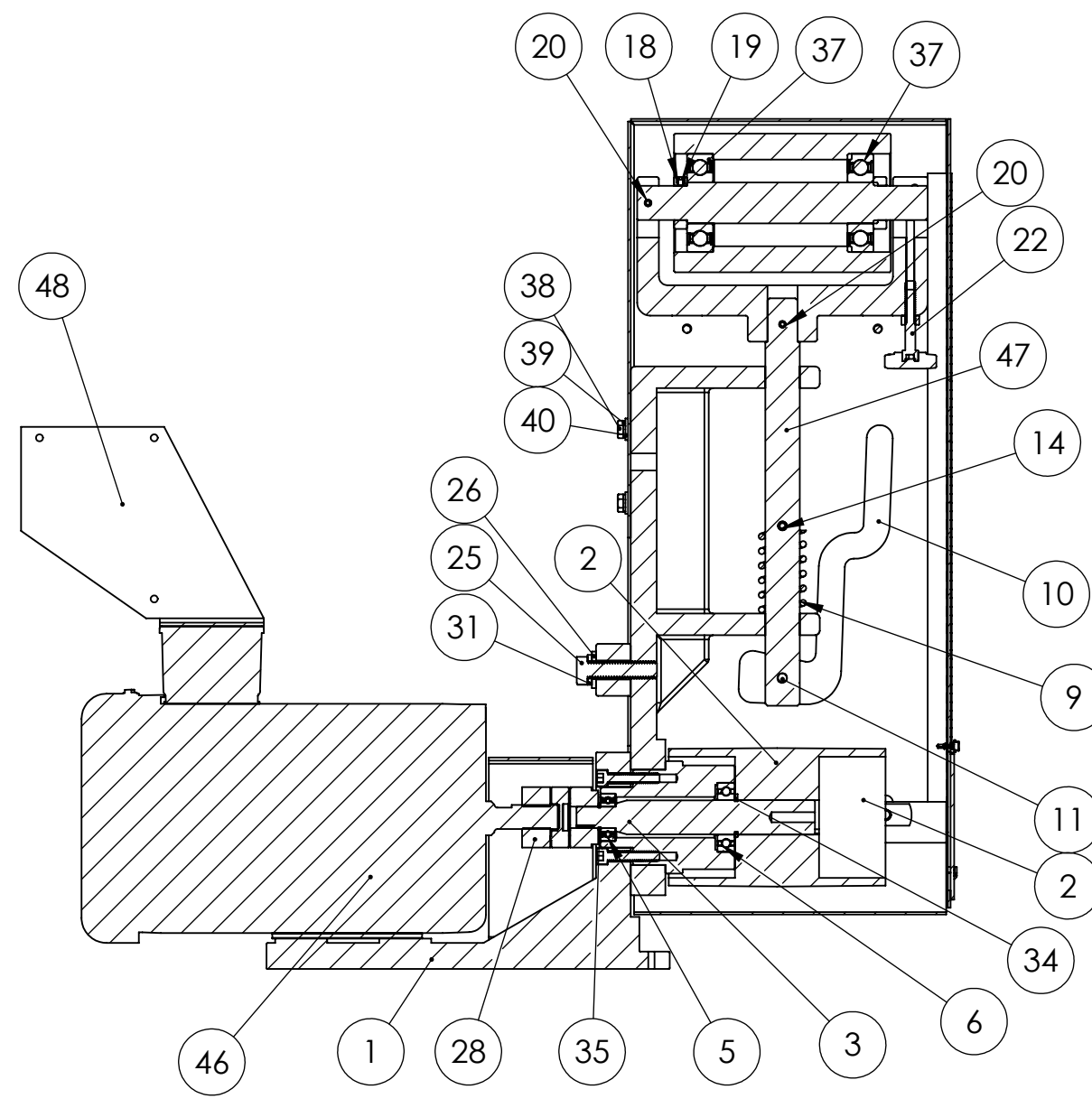
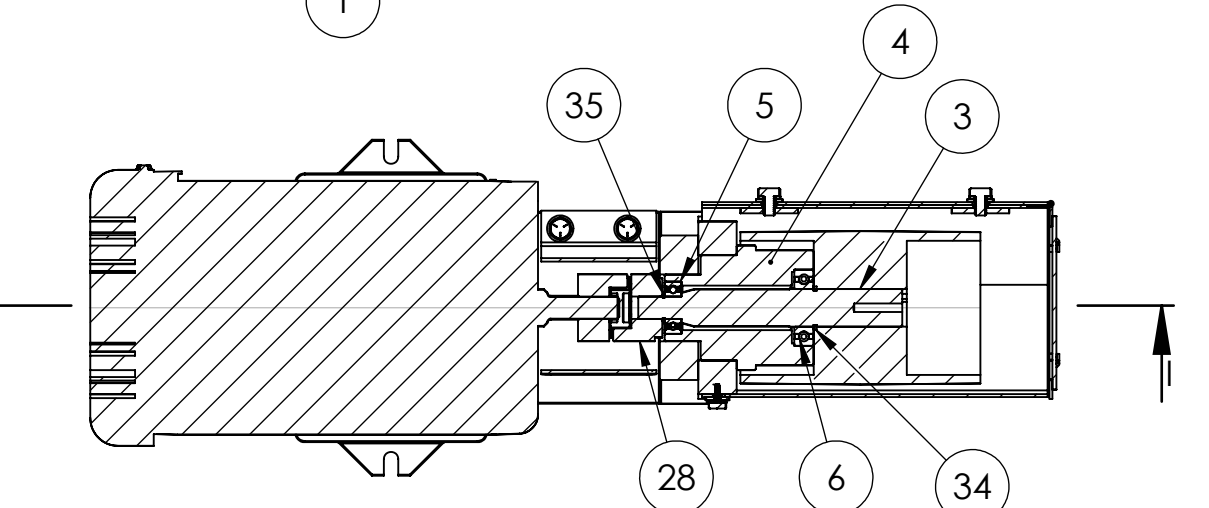


SECTION E-E

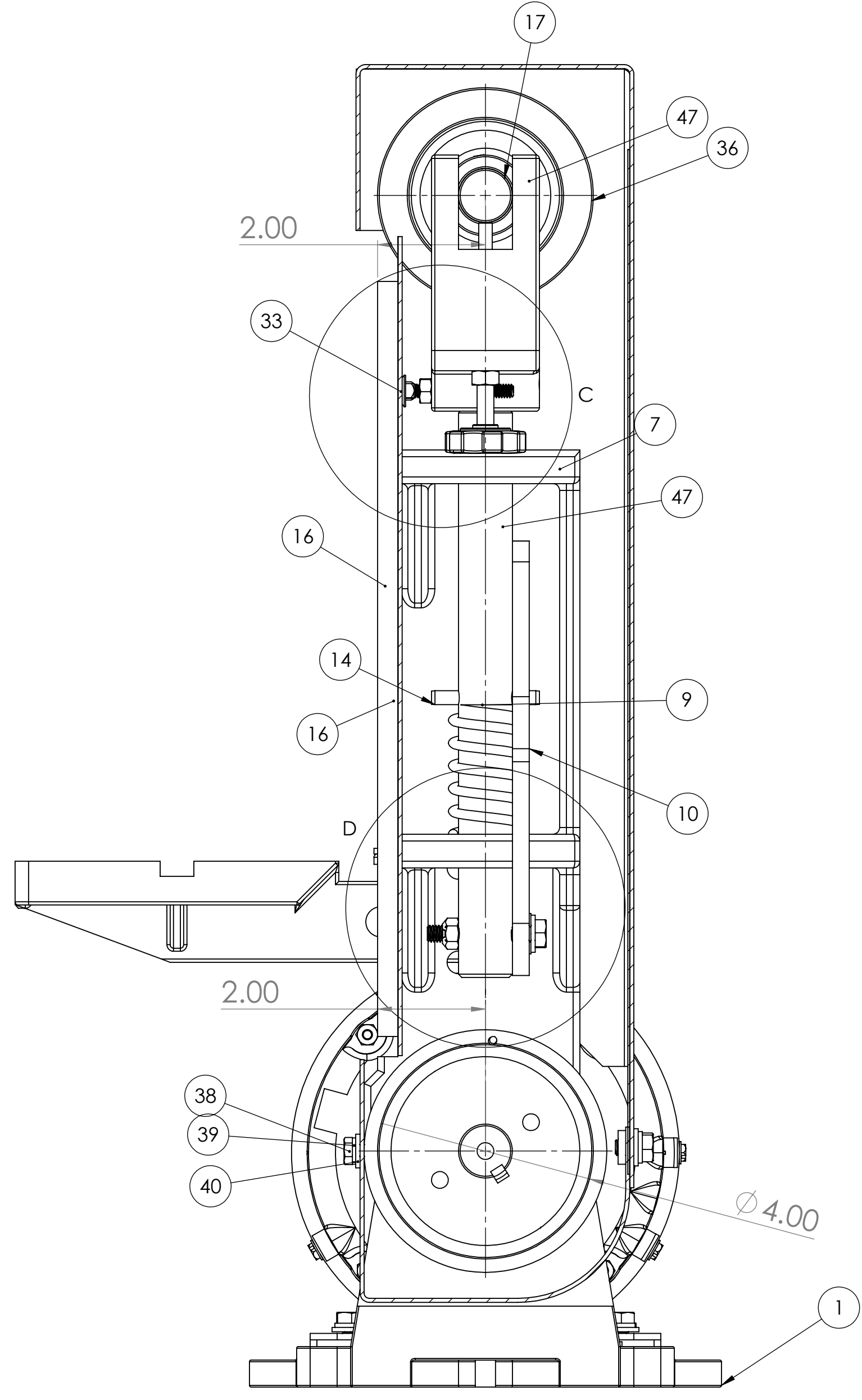


USE EXISTING JUNCTION
BOX COVER SCREWS TO
FASTEN SWITCH BRACKET
TO MOTOR JUNCTION
BOX

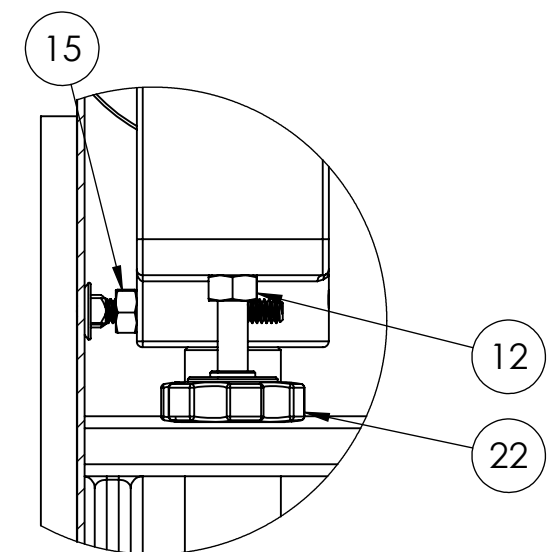
SECTION G-G



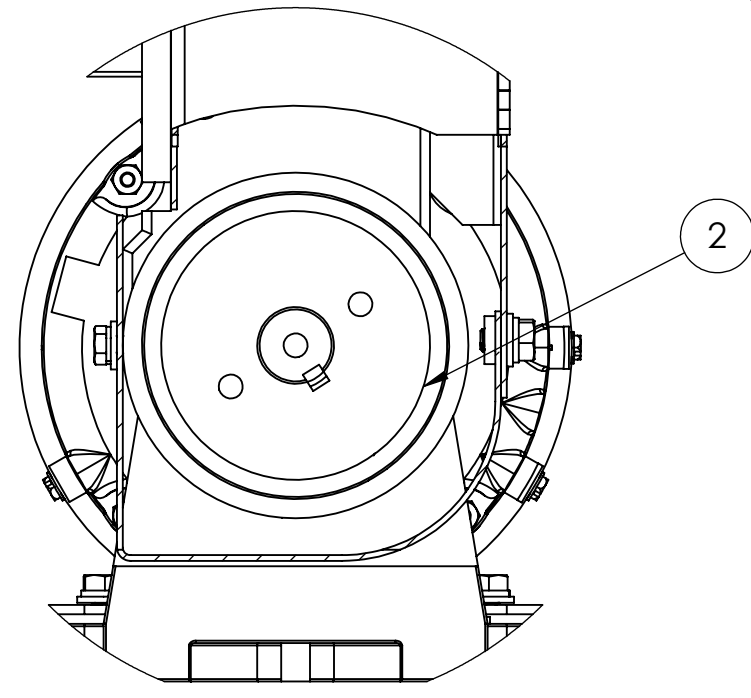
SECTION H



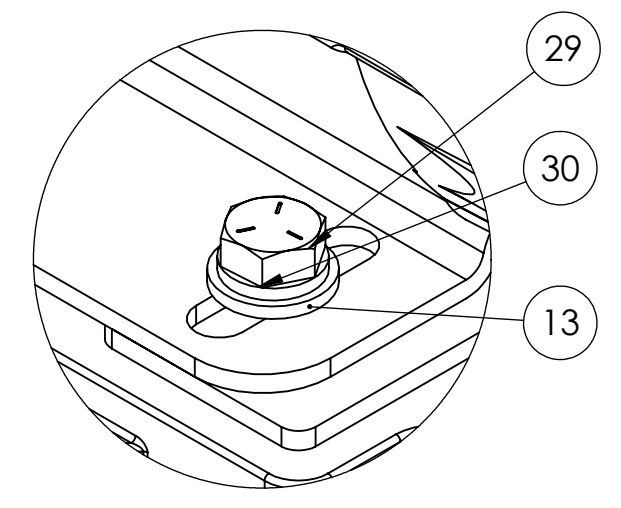
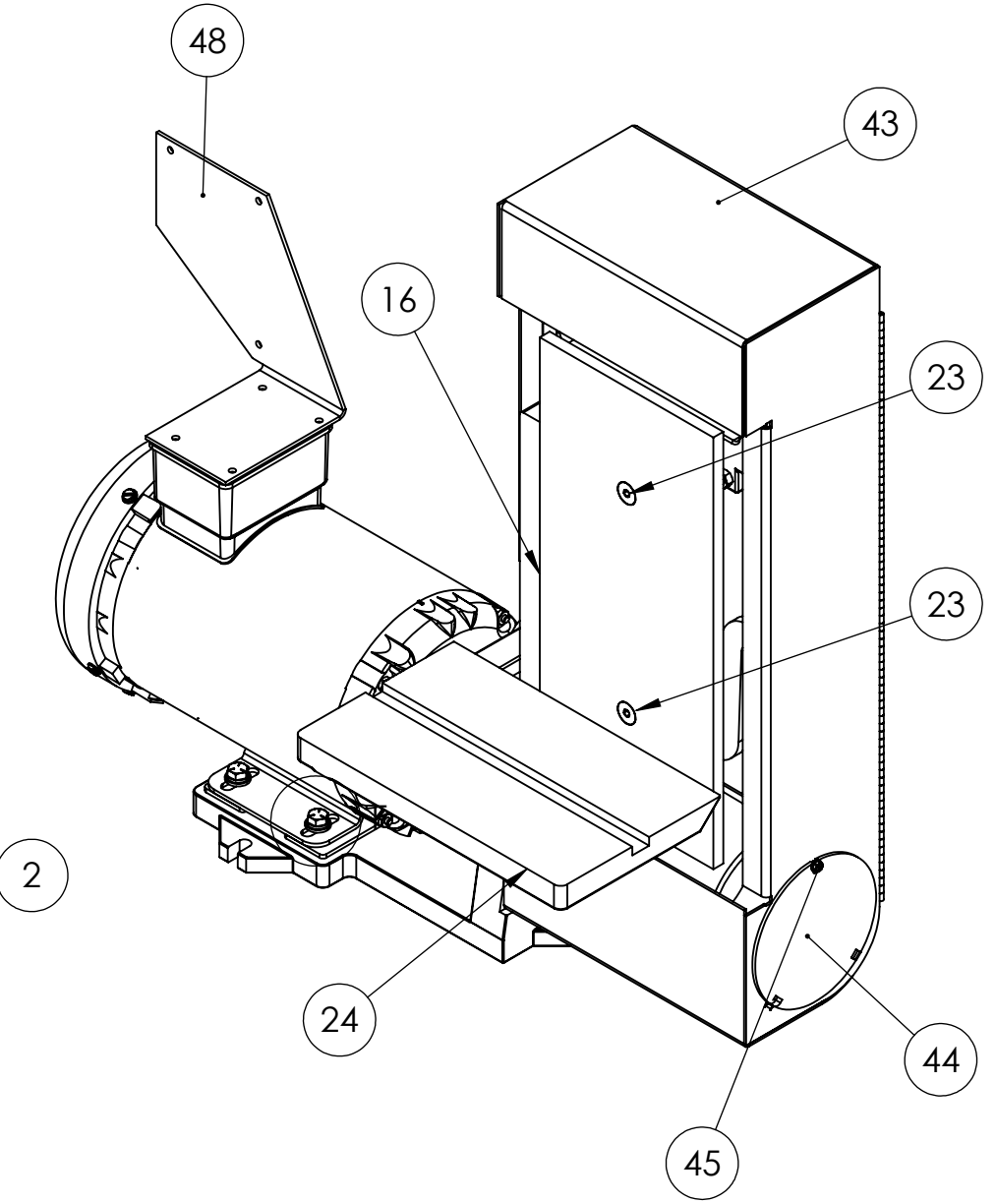
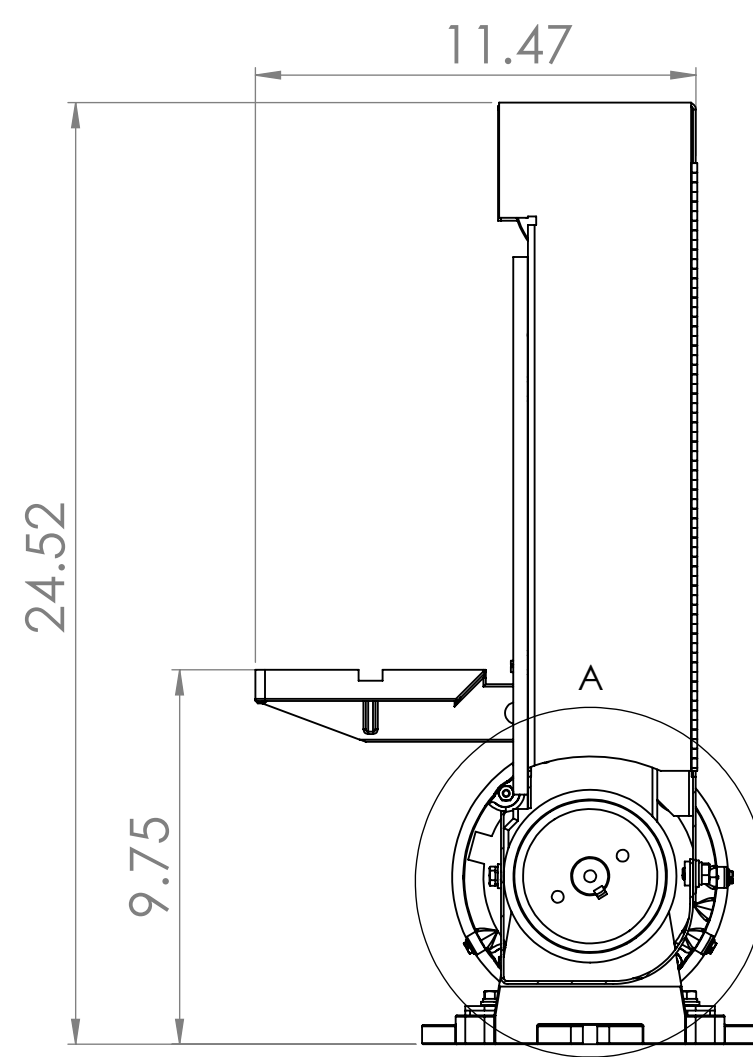
SECTION B-B
SCALE 1 : 2



DETAIL C
SCALE 1 : 2



DETAIL A
SCALE 2 : 5



DETAIL F
SCALE 1 : 1

ITEM NO.	PART NUMBER	DESCRIPTION	QTY.
1	050-020	S6 BASE	1
2	560-015	S6 DRIVE PULLEY	1
3	701-018	S6 DRIVE SPINDLE	1
4	386-013	S6 BEARING HOUSING	1
5	044-007	K10 BEARING	1
6	044-001	K12 BEARING	1
7	291-004	CAST IRON FRAME FOR S6M, S612 SANDERS	1
8	SHCA031024	5/16-18 X 1-1/2 SHCS	2
9	697-024	S6 BELT TENSION SPRING	1
10	455-003	TENSION RELEASE LEVER FOR S6 SANDER HEADS	1
11	HHT5031032	5/16-18x2 HEX HEAD TAP BOLT GR5 ZINC	1
12	FHN5031	5/16-18 FHN GR5 ZINC	1
13	UFWZ031	5/16 USS F/W Z	7
14	ROLA025024	1/4 X 1-1/2 ROLL PIN	1
15	FHN5025	1/4-20 FHN GR5 Z	2
16	563-002	S6 BELT PLATEN	1
17		S6 IDLER SPINDLE- NEW STYLE	1
18		S6 IDLER PULLEY LOCK COLLAR	2
19	SSKA025004	1/4-20 X 1/4 SOC SET KNURL PT.	2
20	ROLA018032	3/16 X 2 ROLL PIN	2
21	DOWA025032	1/4 X 2 DOWEL PIN	1
22	441-014	TRACKING KNOB ASSEMBLY	1
23	FSCA031012	5/16-18 X 3/4 FSHCS	2
24	829-012	S6 WORK TABLE	1
25	HHC5050032	1/2-13 X 2 HHCS GR5 Z	1
26	SFWZ050	1/2 SAE F/W Z	1
27	SSHA025006	1/4-20 X 3/8 SOC SET 1/2 DOG	1
28	148-001	S6 COUPLING ASSEMBLY	1
29	HHC5031012	5/16-18 X 3/4 HHCS GR5 Z	6
30	SLWZ031	5/16 SPLIT L/W Z	6
31	SLWZ050	1/2 SPLIT L/W Z	1
32	342-023	S6 COUPLING GUARD	1
33	CRBZ025032	1/4-20 X 2 CARRIAGE BOLT ZINC PLATED	2
34	641-007	RETAINING RING 1" FOR S6, S460W, S612 DRIVE SPINDLE	1
35	641-016	RETAINING RING FOR S6, S460W, S612	1
36	560-016IPA	S6 IDLER PULLEY ASSEMBLY	1
37		K20 SPINDLE BEARING	2
38	HHC5025008	1/4-20 X 1/2 HHCS GR5 Z	3
39	SLWZ025	1/4 SPLIT L/W Z	3
40	UFWZ025	1/4 USS F/W Z	3
41	BWWA031	5/16 BOWED SPRING WASHER 21/64	1
42	STNZ031	5/16-18 STOVER LOCK NUT ZINC- WAX	1
43	342-069	S6 BELT GUARD ASSEMBLY	1
44	342-069C	BLANK COVER FOR S6M SANDER OSHA GUARD	1
45	HWTZ008008	#8 X 1/2 HWH TEKS Z	1
46	486-007	3HP MOTOR FOR K8B, K10B, KM10, BG260H, S460W, S6M AND S612	1
47	960-006YA	YOKE WITH TENSION SHAFT FOR S6 SANDERS	1
48	041-091	BRACKET FOR S6M WITH ROTARY SWITCH	1

PROPRIETARY AND CONFIDENTIAL
THE INFORMATION CONTAINED IN THIS
DRAWING IS THE SOLE PROPERTY OF
KALAMAZOO INDUSTRIES, INC. ANY
REPRODUCTION IN PART OR AS A WHOLE
WITHOUT THE WRITTEN PERMISSION OF
KALAMAZOO INDUSTRIES, INC. IS
PROHIBITED.

UNLESS OTHERWISE SPECIFIED:	NAME	DATE
DIMENSIONS ARE IN INCHES		
FRACTIONAL: ±	DRAWN	
ANGULAR: ± MACH ±	CHECKED	
TWO PLACE DECIMAL ±	ENG APPR.	
THREE PLACE DECIMAL ±	MFG APPR.	
INTERPRET GEOMETRIC TOLERANCING PER:	Q.A.	
MATERIAL	COMMENTS:	
FINISH		
APPLICATION	DO NOT SCALE DRAWING	

TITLE:	S6 BELT SANDER ASSEMBLY	
SIZE DWG. NO.	D S6 BELT SANDER ASSEMBLY	REV
SCALE: 1:5	WEIGHT:	SHEET 1 OF 1

8

7

6

5

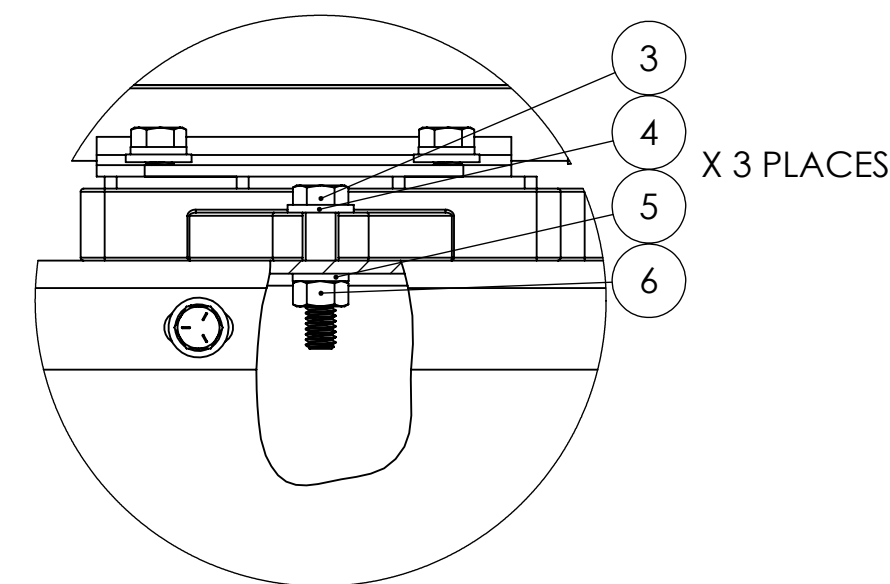
4

3

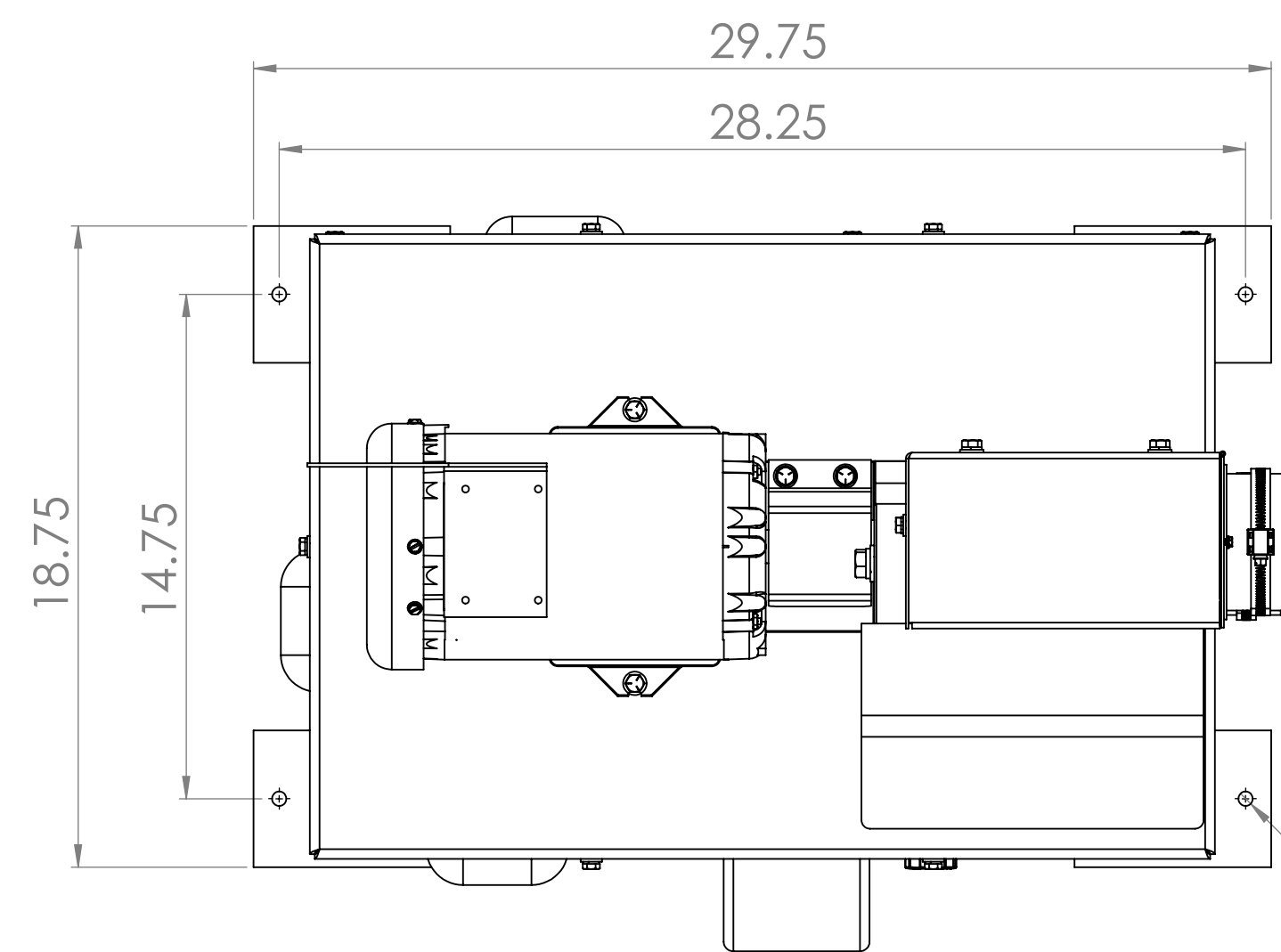
2

1

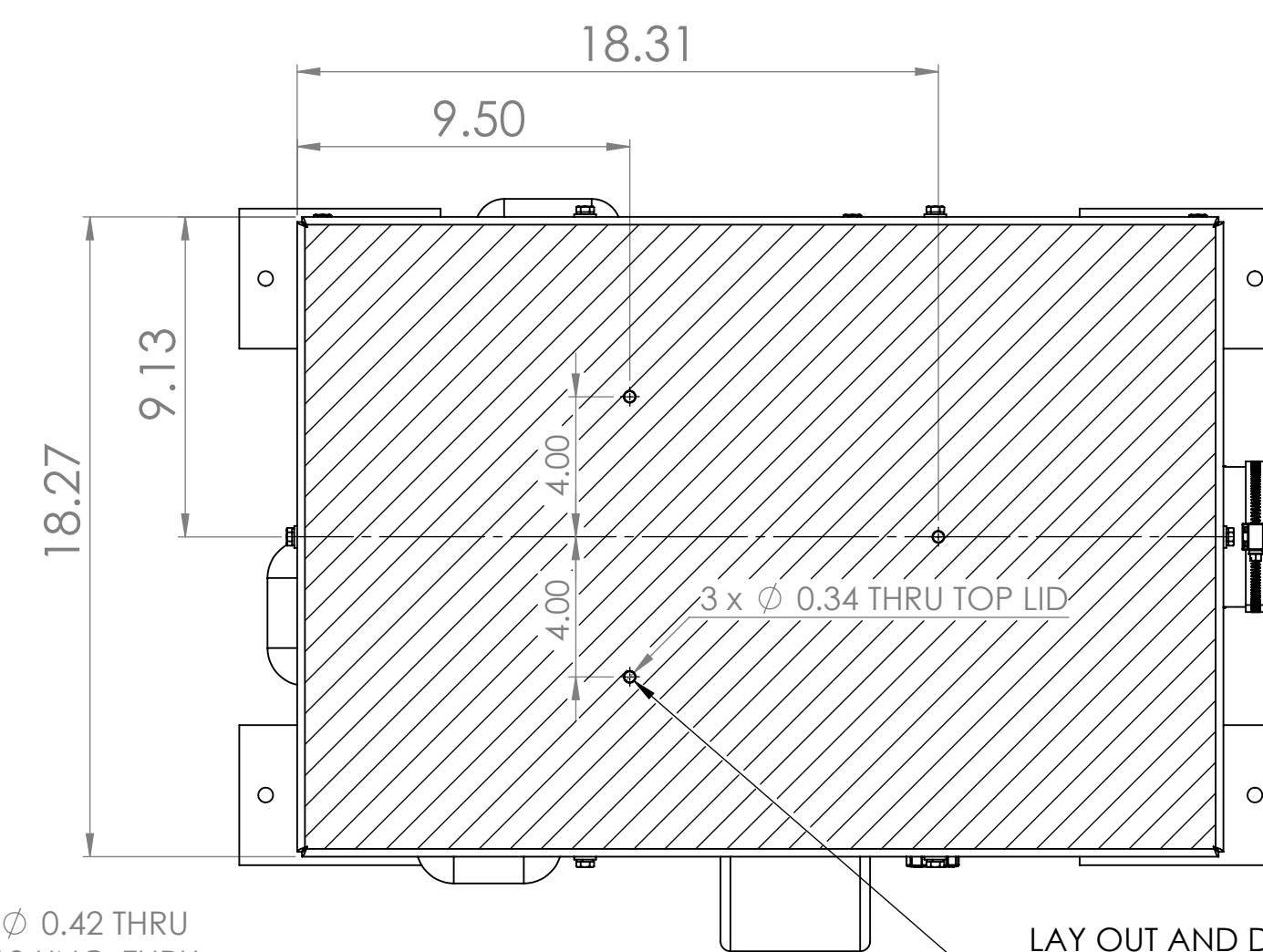
ITEM NO.	PART NUMBER	DESCRIPTION	QTY.
1	DCV-6	DCV-6 DUST COLLECTOR	1
2	S6 BELT SANDER ASSEMBLY	S6 BELT SANDER ASSEMBLY	1
3	HHC5031024	5/16-18 X 1-1/2 HHCS GR5 Z	3
4	UFWZ031	5/16 USS F/W Z	3
5	SLWZ031	5/16 SPLIT L/W Z	3
6	FHN5031	5/16-18 FHN GR5 ZINC	3
7	342-069B	4" ORIFACE W/ FLANGE FOR 6" SANDER GUARDS	1
8	389-002X55 INCHES	55 INCHES OF 4" DIA HOSE	1
9	HS64	4 INCH HOSE CLAMP	2



DETAIL A
SCALE 1:2

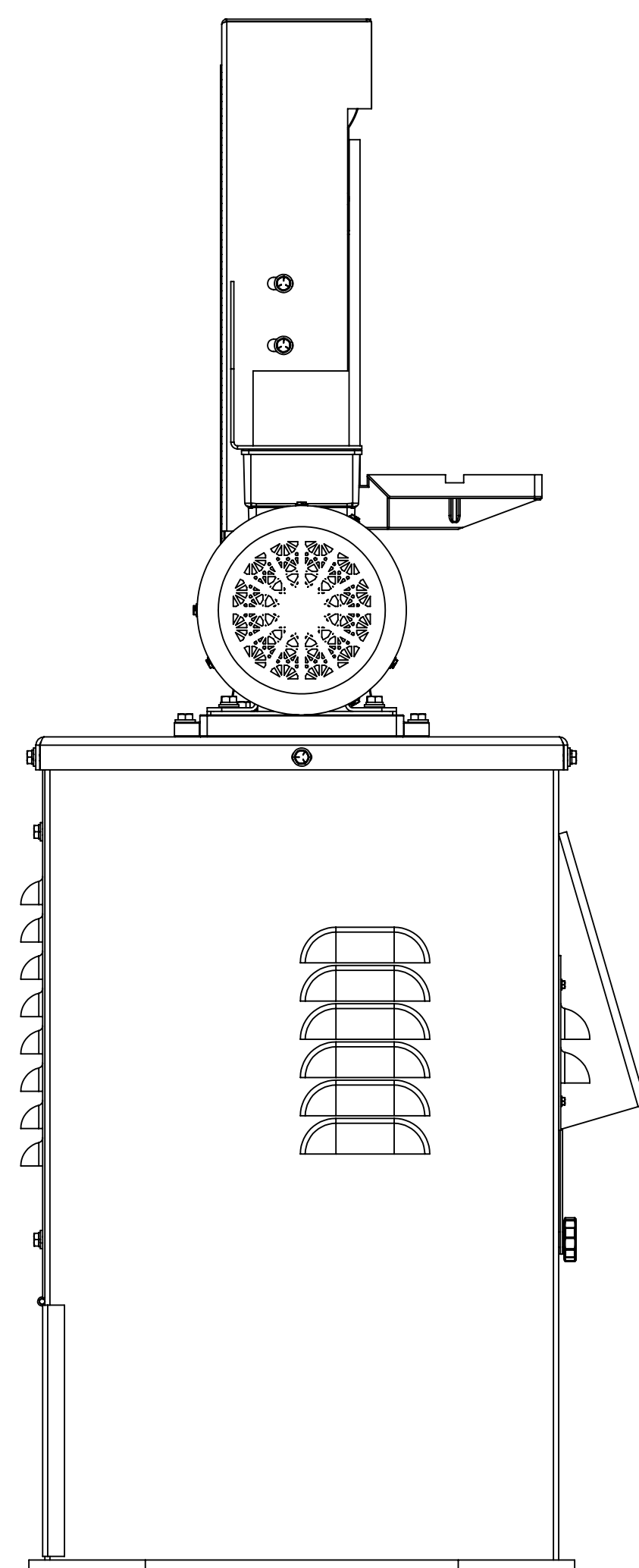
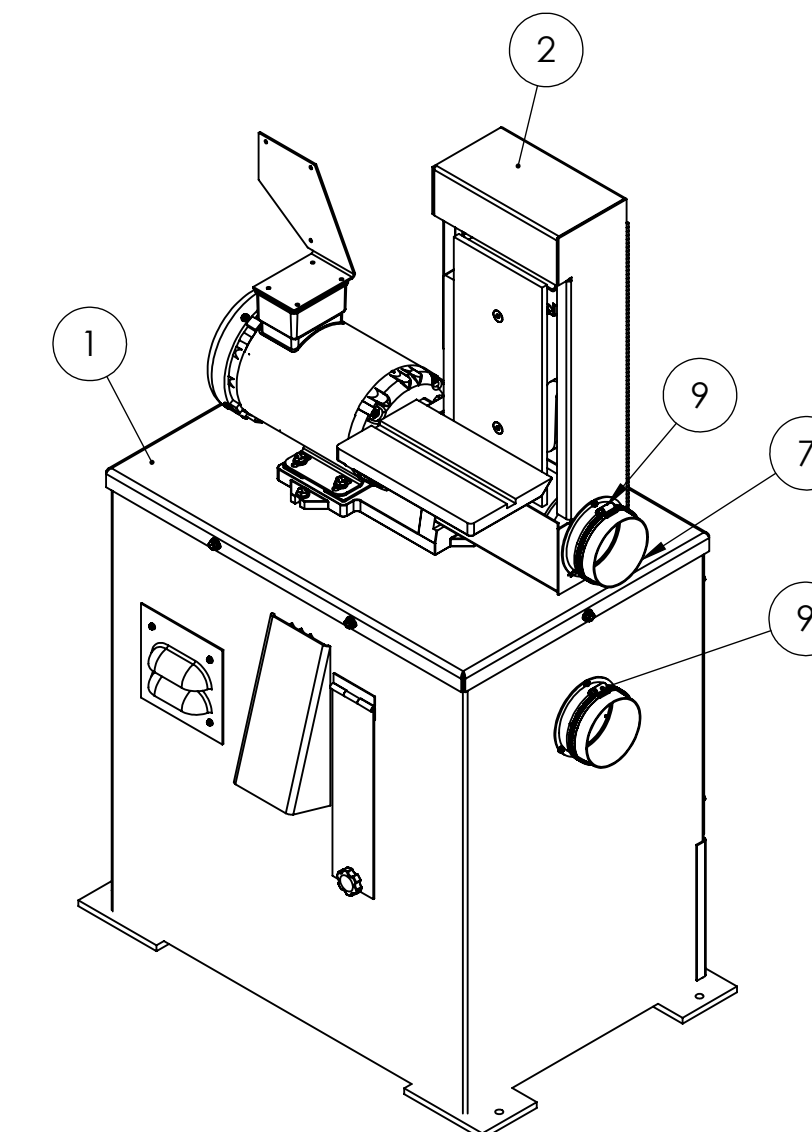


TOP VIEW

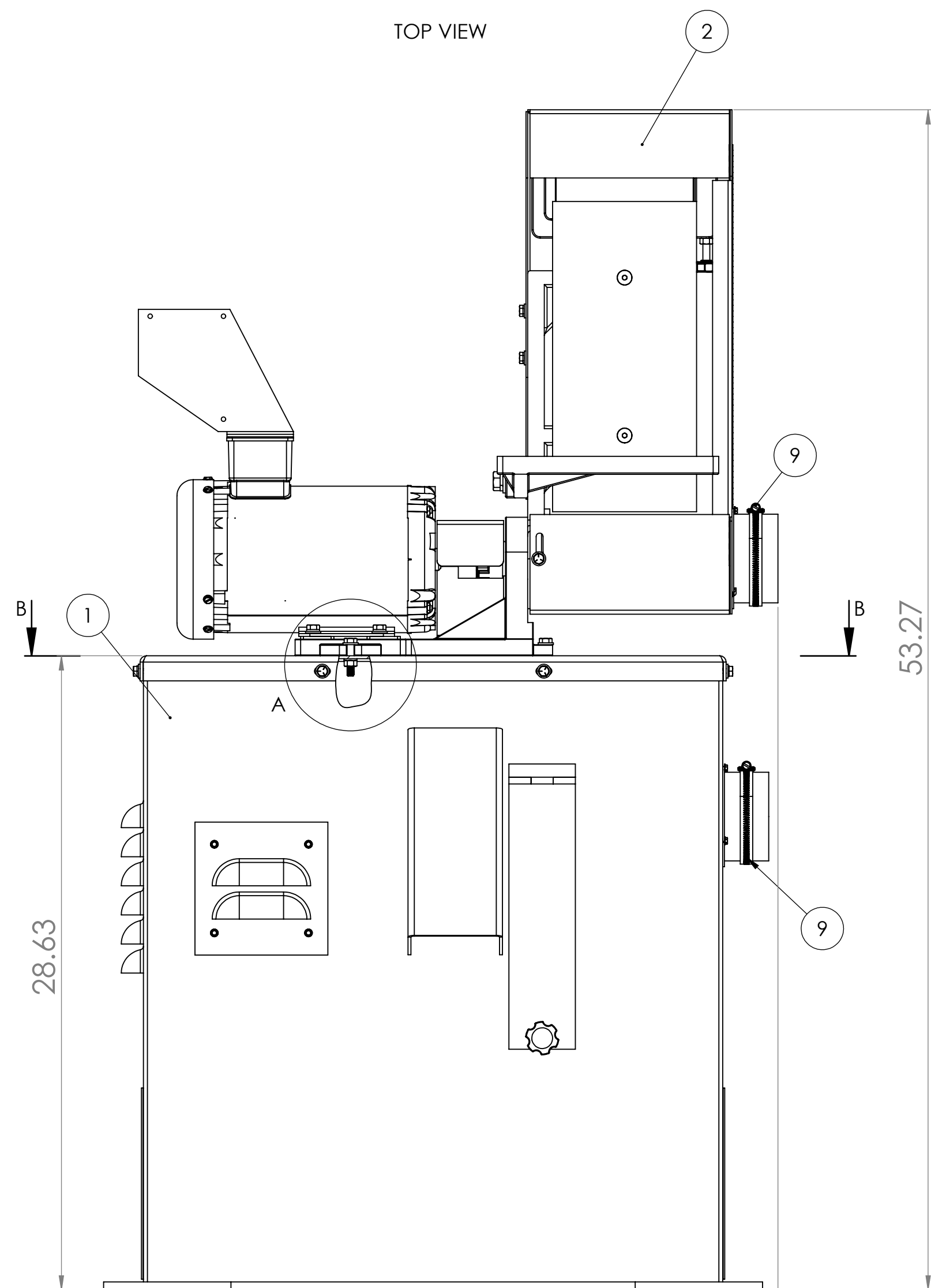


SECTION B-B

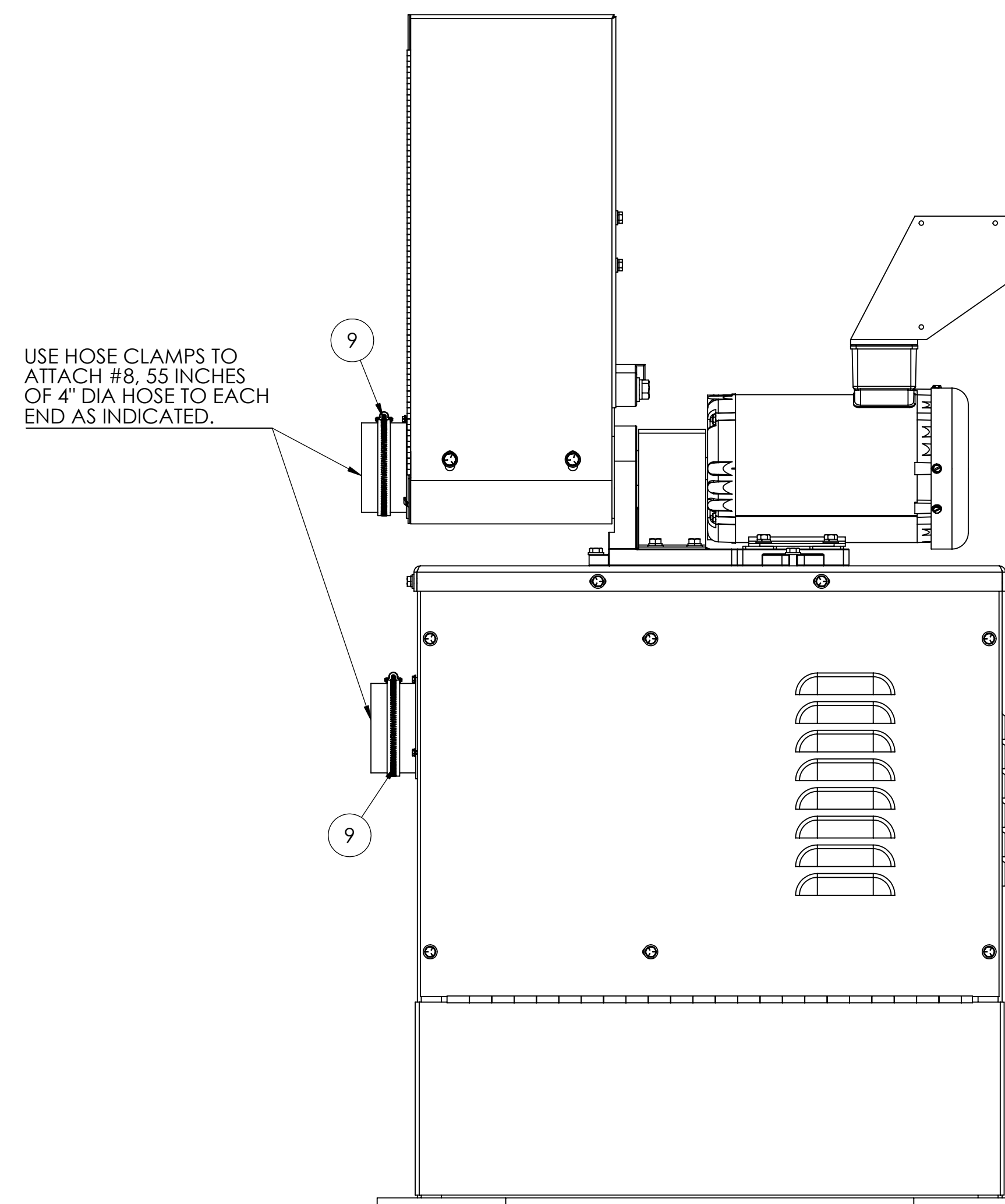
LAY OUT AND DRILL PATTERN AS SHOWN TO ATTACH S6 BELT SANDER ASSEMBLY TO DCV-6 DUST COLLECTOR CABINET.



LEFT SIDE VIEW



FRONT VIEW



BACK VIEW

USE HOSE CLAMPS TO ATTACH #8, 55 INCHES OF 4" DIA HOSE TO EACH END AS INDICATED.

SEE S6 DRAWING FOR S6 BELT SANDER DETAILS

SEE DCV-6 DRAWING FOR DCV-6 DUST COLLECTOR DETAILS

PROPRIETARY AND CONFIDENTIAL
THE INFORMATION CONTAINED IN THIS DRAWING IS THE SOLE PROPERTY OF KALAMAZOO INDUSTRIES, INC. ANY REPRODUCTION IN PART OR AS A WHOLE WITHOUT THE WRITTEN PERMISSION OF KALAMAZOO INDUSTRIES, INC. IS PROHIBITED.

UNLESS OTHERWISE SPECIFIED:		NAME	DATE
DIMENSIONS ARE IN INCHES			
TOLERANCES:			
FRACTIONAL ±			
ANGULAR ±			
TWO PLACE DECIMAL ±			
THREE PLACE DECIMAL ±			
INTERPRET GEOMETRIC TOLERANCING PER:			
MATERIAL			
FINISH			
APPLICATION	DO NOT SCALE DRAWING		

DRAWN			
CHECKED			
ENG APPR.			
MFG APPR.			
Q.A.			
COMMENTS:			

TITLE:		KALAMAZOO INDUSTRIES, INC.	
MODEL S6MV ASSEMBLY			
SIZE	DWG. NO.	REV	
D	S6MV		
SCALE: 1:5	WEIGHT:	SHEET 1 OF 1	

8

7

6

5

4

3

2

1