

KALAMAZOO
INDUSTRIES, INC.
www.kalamazooindustries.com

**S460W WET
BELT SANDER MANUAL**



MADE IN USA

KALAMAZOO

INDUSTRIES, INC.

www.kalamazooindustries.com

WARRANTY

All products are guaranteed for a period of one year from receipt of order to the original purchaser, against defects in material workmanship under normal use. Electric motors are warranted by the motor manufacturer for a period of one year and will be repaired by the nearest motor repair station. If non-repairable, they will be replaced by Kalamazoo Industries. Please call for instructions (269) 382-2050.

RETURN POLICY

Authorization must be obtained before returning merchandise. Please call our customer service department for a return authorization number (269) 382-2050. Please include with your return a copy of your invoice of packing slip. All material must be new and unused in the original packaging. Material must be sent back prepaid (unless otherwise indicated) by Kalamazoo Industries. Credit upon inspection at Kalamazoo Industries. All returns will be subject to a 10% restock charge. Used merchandise is non-returnable. No returns will be accepted after one year of invoice date.

BELT SANDER SAFETY

- READ THE OPERATING INSTRUCTIONS BEFORE RUNNING MACHINE.
- ALWAYS WEAR SAFETY GLASSES OR A FULL FACE SHIELD FOR PROTECTION.
- KEEP HANDS CLEAR OF THE SANDING AREA.
- NEAR WEAR GLOVES OR LOOSE FITTING CLOTHES WHEN OPERATING THIS MACHINE.
- ALWAYS KEEP HAIR TIED BACK OR COVERED.
- LET MACHINE ROTATION COME TO A FULL STOP BEFORE CHANGING BELT.
- KEEP SAFETY GUARDS IN PLACE. DO NOT ALTER GUARD OR MACHINE IN ANYWAY. ANY ALTERATIONS TO GUARDS OR MACHINE COULD CAUSE SERIOUS INJURY.
- ALL BELT SANDERS SHOULD BE OPERATED IN A WELL-VENTILATED AREA. THE DUST CREATED WHEN SOME MATERIALS ARE SANDED CAN BE HARMFUL. DUST MASKS ARE RECOMMEND AS A PRACTICAL MEAN OF MINIMIZING DUST INHALATION. FUMES FROM OTHER OTHER SOURCES CAN ALSO CAUSES FIRES WHEN INTACT WITH SANDING SPARK.
- SPARKS CREATED BY SANDING SHOULD BE DIRECTED DOWNWARD AND AWAY FROM THE FACE AND BODY. DON NOT GRIND NEAR FLAMMABLE MATERIAL.
- ELECTRIC SANDING MACHINES ARE NOT INTENDED FOR USE IN OR NEAR WATER. THIS INCLUDES AN OPERATOR STANDING ON A WET FLOOR OR WORKING AROUND CONTAINERS OF WATER OR OTHER CONDUCTIVE LIQUIDS.

KALAMAZOO

INDUSTRIES, INC.

www.kalamazooindustries.com

WARNING!

TO REDUCE THE RISK OF FIRE OR SHOCK HAZARD,
DO NOT EXPOSE THIS EQUIPMENT TO RAIN, ANY LIQUID OR MOISTURE.

INSPECTION

If these goods are damaged in transit, the **DELIVERING TRANSPORTATION COMPANY** is required by law to make notation of damages on the freight bill. If in your opinion, there may be concealed damage, they are required to make an inspection after goods are unpacked. Transportation rates are made in proportion to damage. Therefore, the carrier and **NOT** the shipper should be charged with any loss or damage. Any claim should be filled with the delivering **TRANSPORTATION COMPANY. PLEASE DO NOT RETURN GOODS TO US WITHOUT OUR RGA NUMBER AND SHIPPING INSTRUCTIONS.**

NOTE: SEE NEXT PAGE FOR RETURN POLICY AND WARRANTY.

IMPORTANT

Read Operating Instructions before using equipment.

OPERATING INSTRUCTIONS

1. Abrasive belt rotation is counter-clockwise. If the abrasive belt is lap spliced be sure of the correct belt rotation. Butt spliced belts bi-directional.
2. Belt tension is pre-set with internal spring **(29)**. No belt tension adjustment is required. The yoke assembly is spring loaded for constant belt tension. The tension lever **(36)** tightens and loosens belt tension.
3. To change belt **disconnect power**: open belt guard **(1)** and locate the tension lever **(36)** between the sander frame **(26)**. Pull down tension lever **(36)** to compress tension spring and release belt tension. Remove and replace sanding belt. Be sure of correct belt rotation. Look inside belt for arrows showing you correct rotation. Lift tension lever **(36)** to allow re-tensioning of belt. Check tracking of belt short on/off of motor before letting the machine run. Spinning the belt by hand with power off will also check rough tracking before running machine. Be sure sanding belt stays centered on platen.
4. Belt tracking: tracking the sanding belt is done with the tracking knob **(47)** on yoke assembly. Tightening knob **(47)** raises idler spindle and the belt moves toward the motor. Loosening the tracking knob drops the idler spindle **(31)** and the sanding belt moves away from the motor. When the belt is centered on the platen **(40)**, tighten jam nut on tracking knob to lock in belt position.

TROUBLE SHOOTING AND TRACKING PROBLEMS

- Drive pulley lost its crown (curvature of pulley)
- Sanding belt are not spliced square.
- Upper pulley assembly not square to platen. (Use carriage bolts to square yoke with platen.)

KALAMAZOO

INDUSTRIES, INC.

www.kalamazooindustries.com

INSTRUCTIONS CONTINUED

NOTE: CONTINUOUS SANDING ON THE SAME SIDE OF PLATEN WILL RESULT IN PREMATURE PLATEN WEAR AND BELT BREAKAGE WILL OCCUR. MOVE WORK PIECE TO DIFFERENT AREAS OF PLATEN TO EXTEND PLATEN AND BELT LIFE.

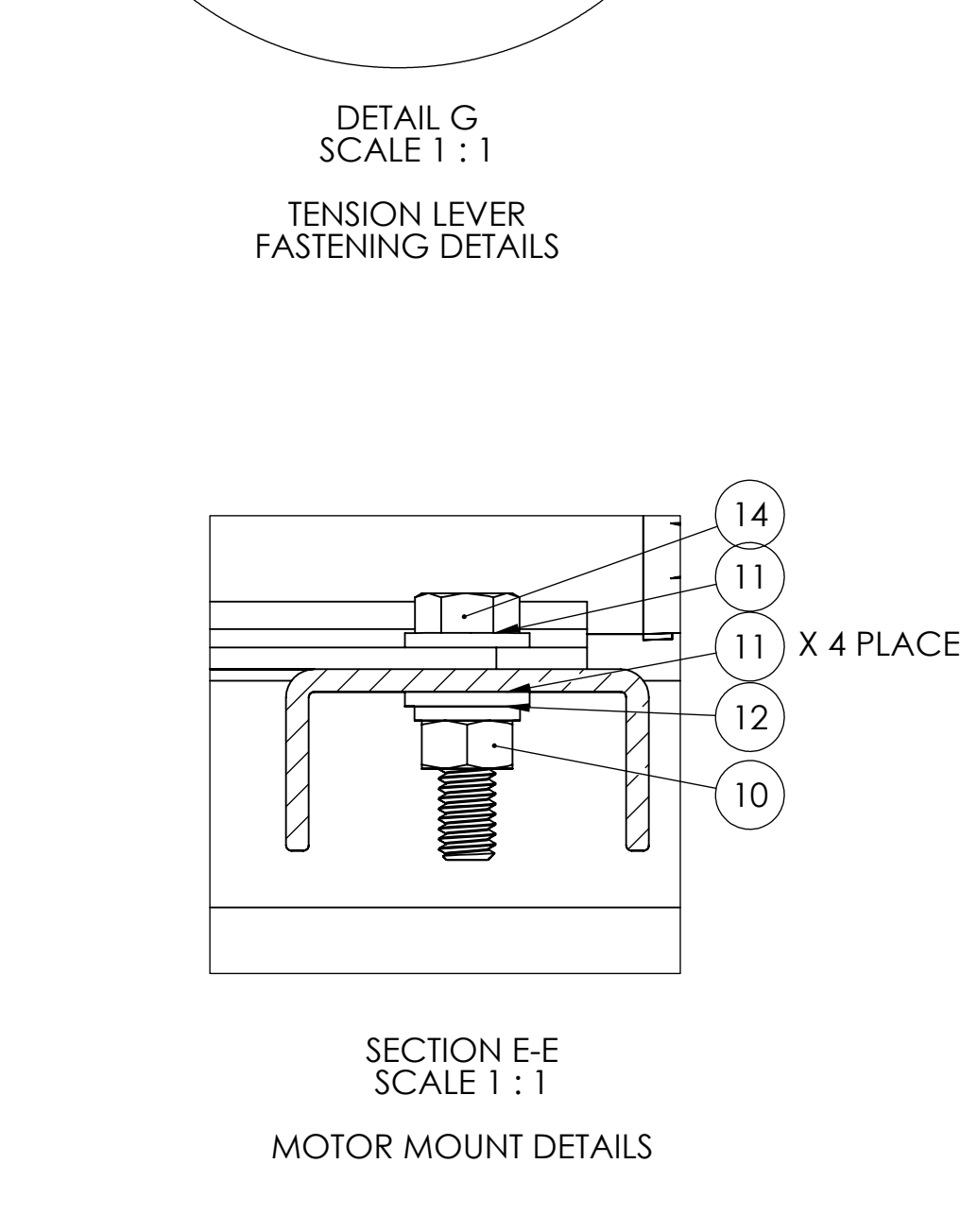
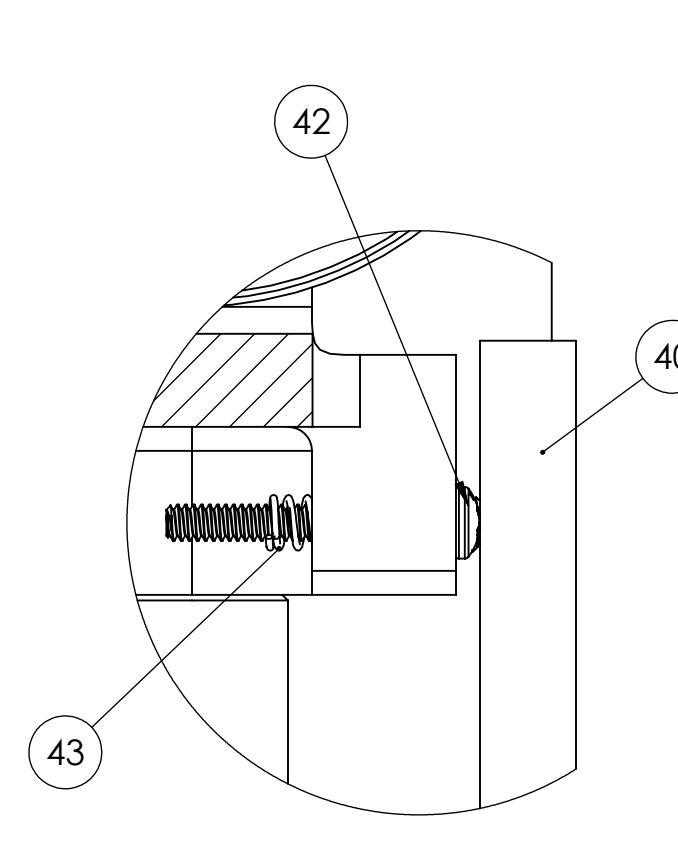
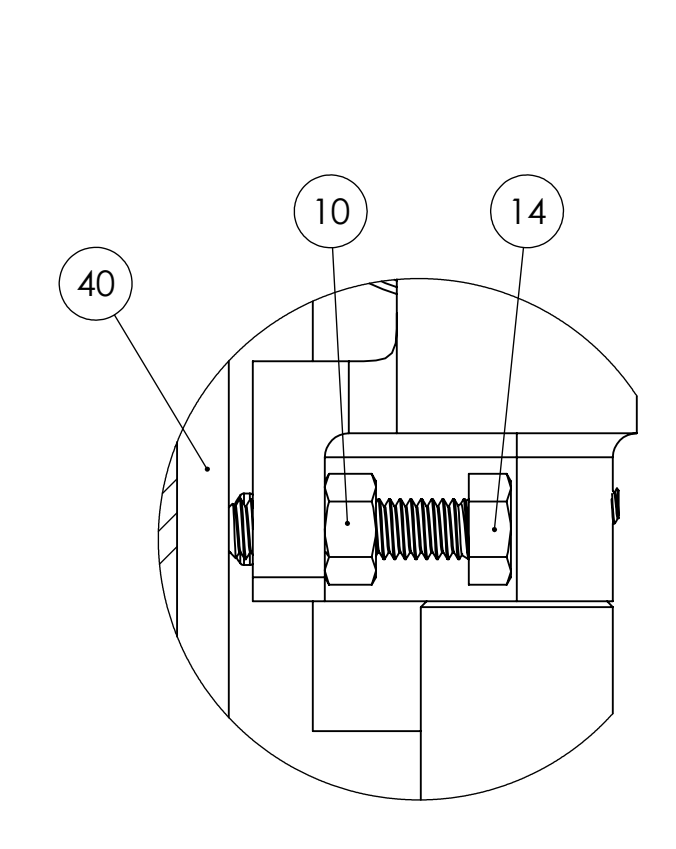
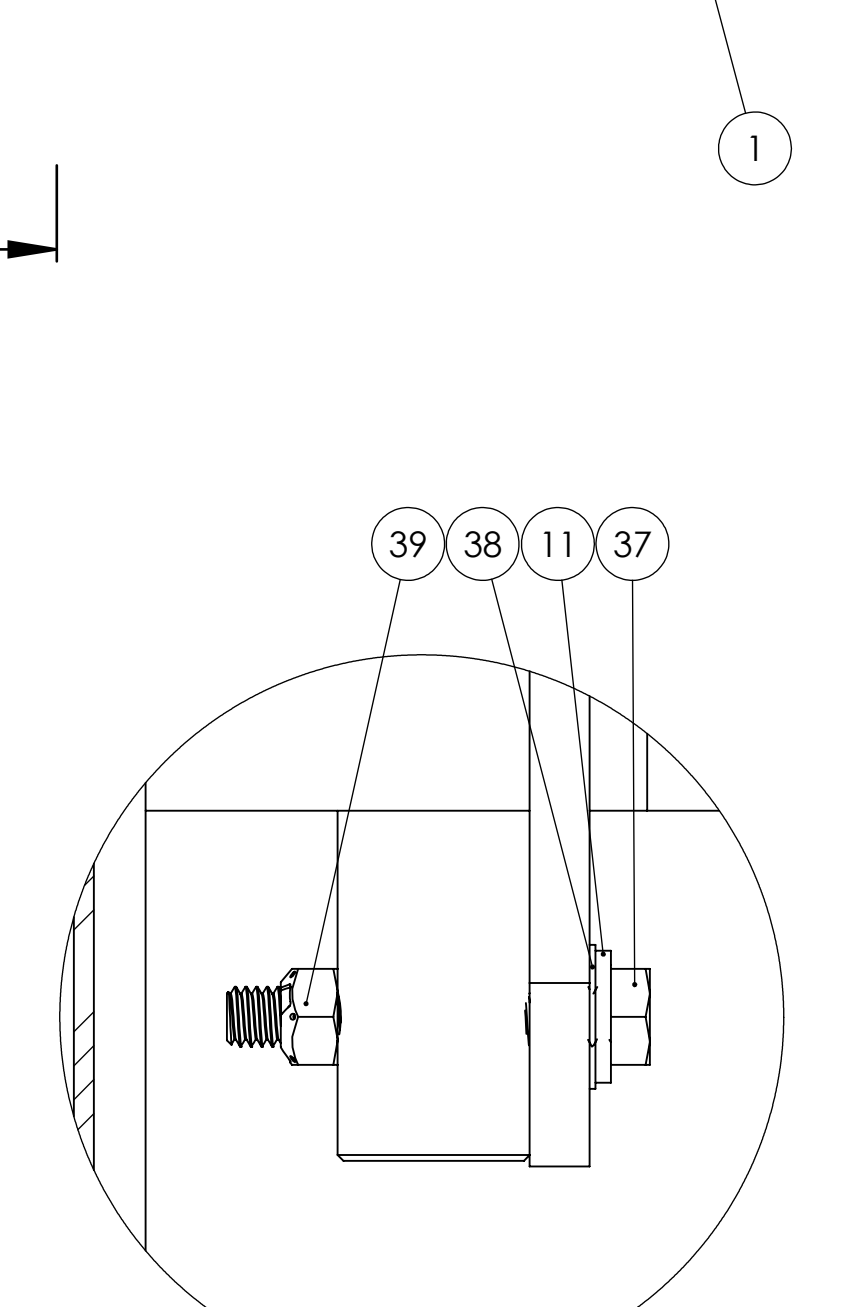
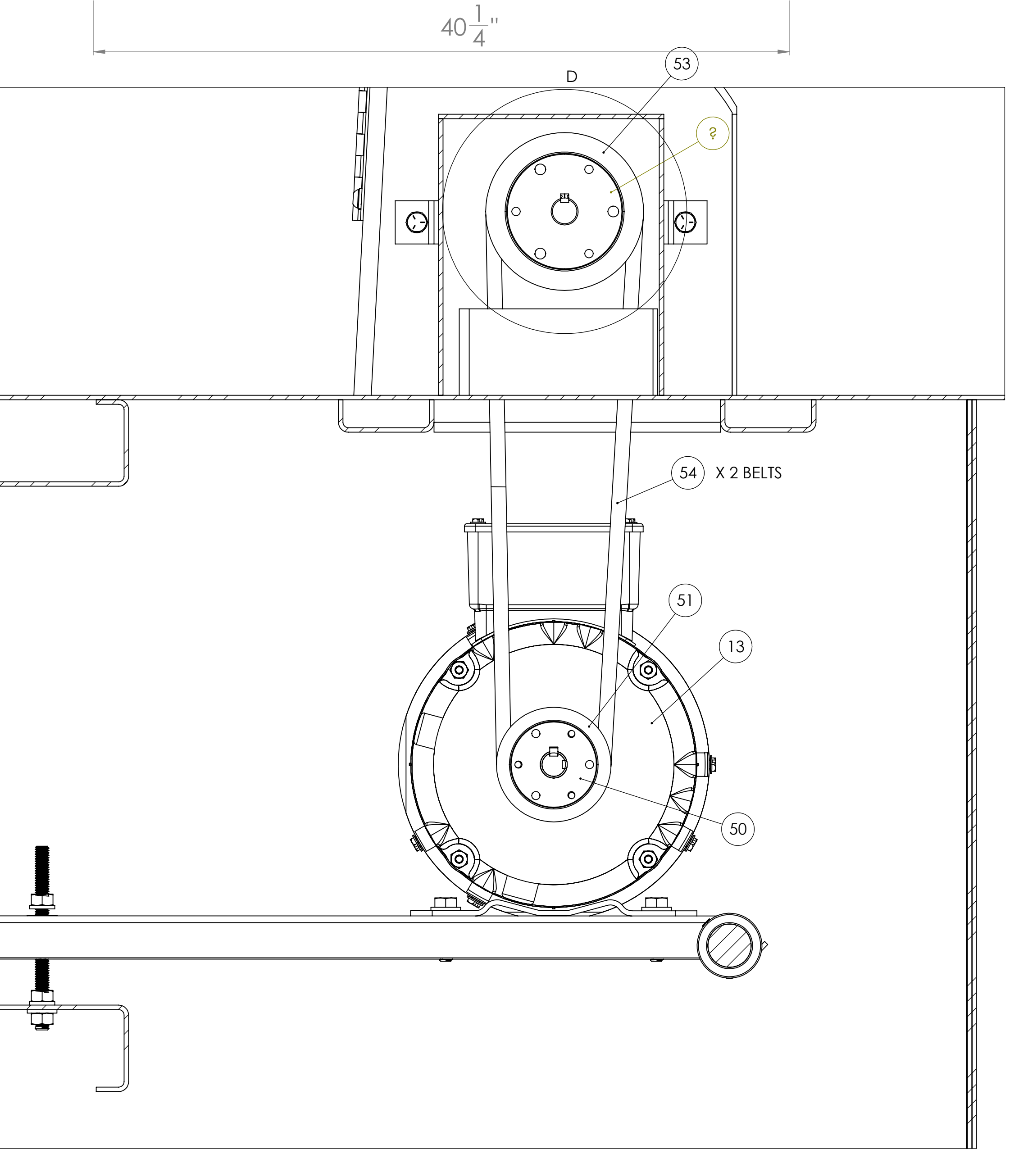
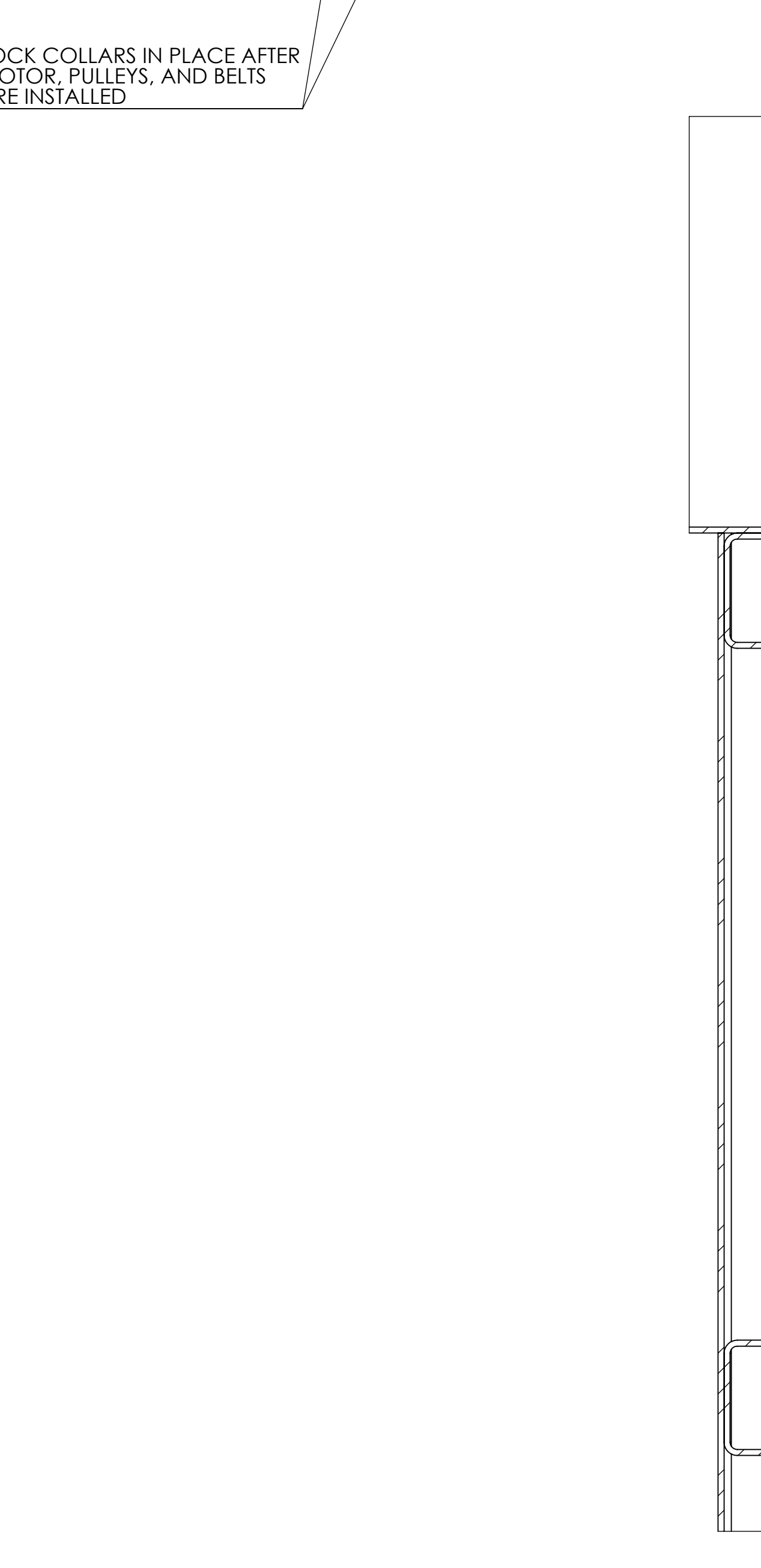
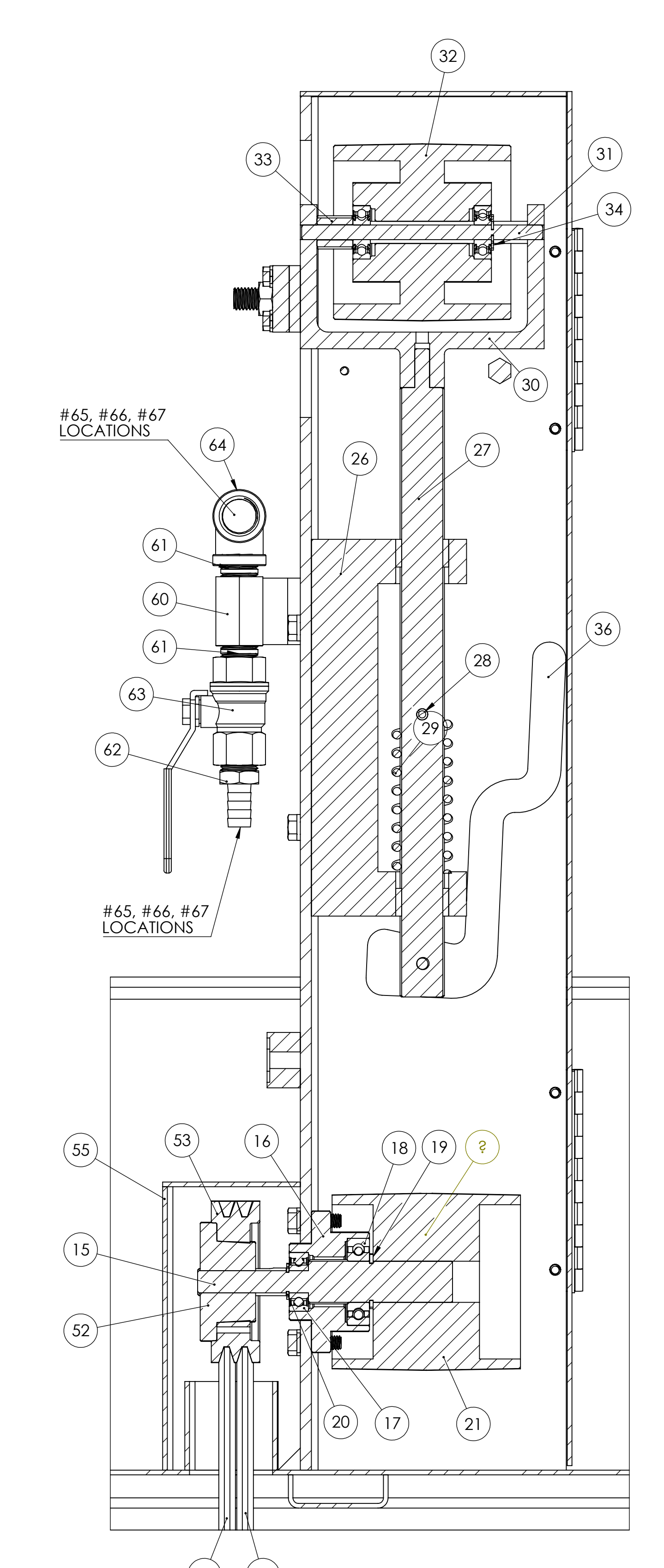
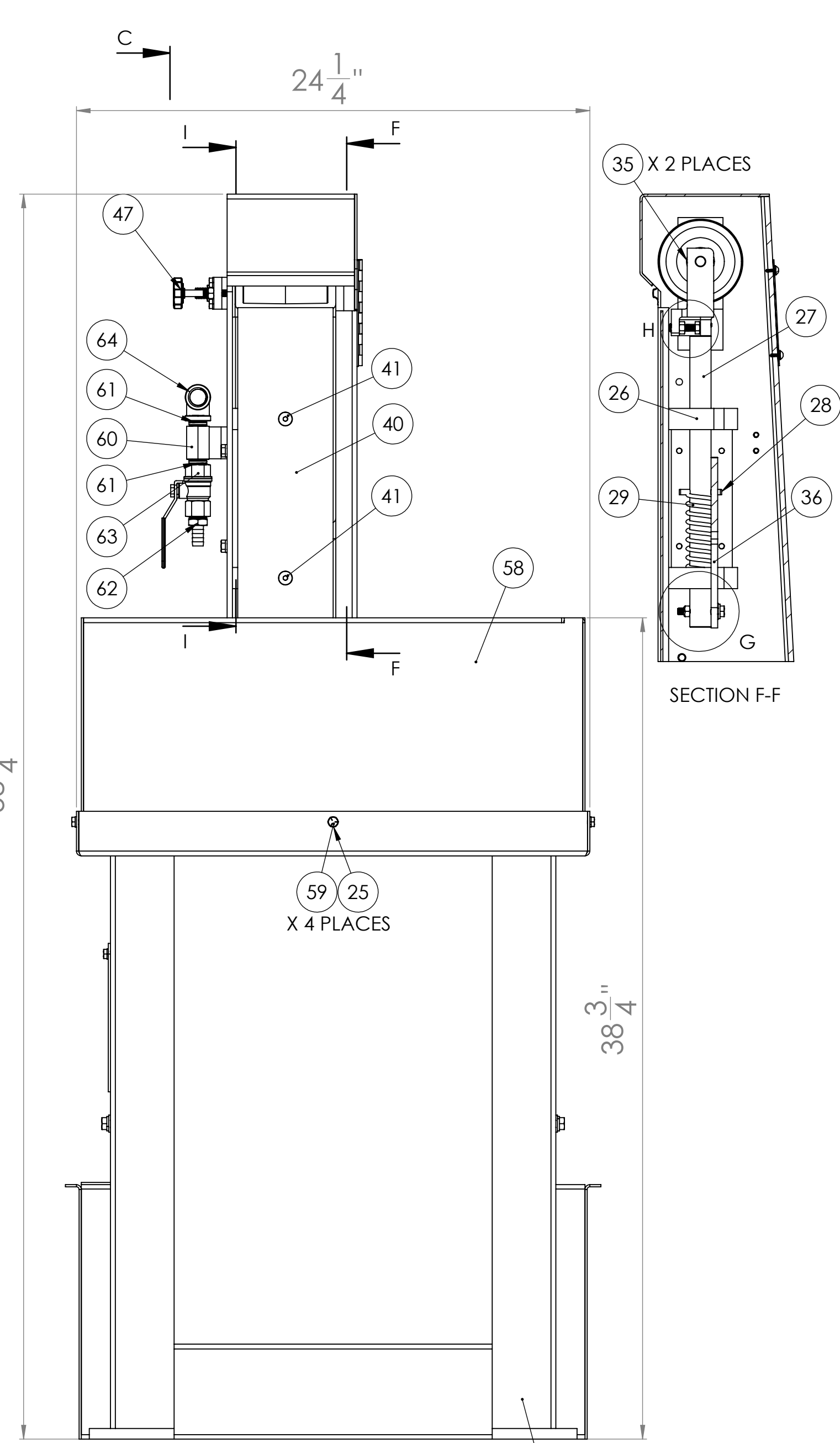
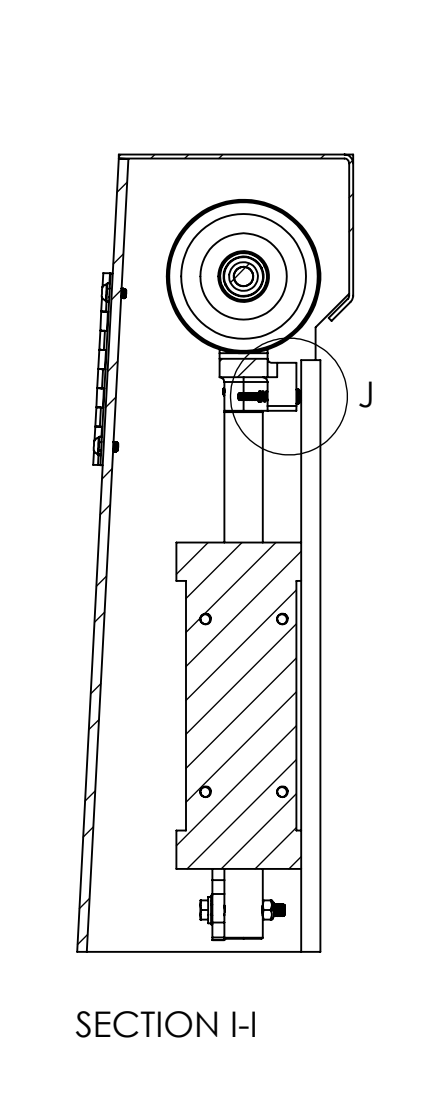
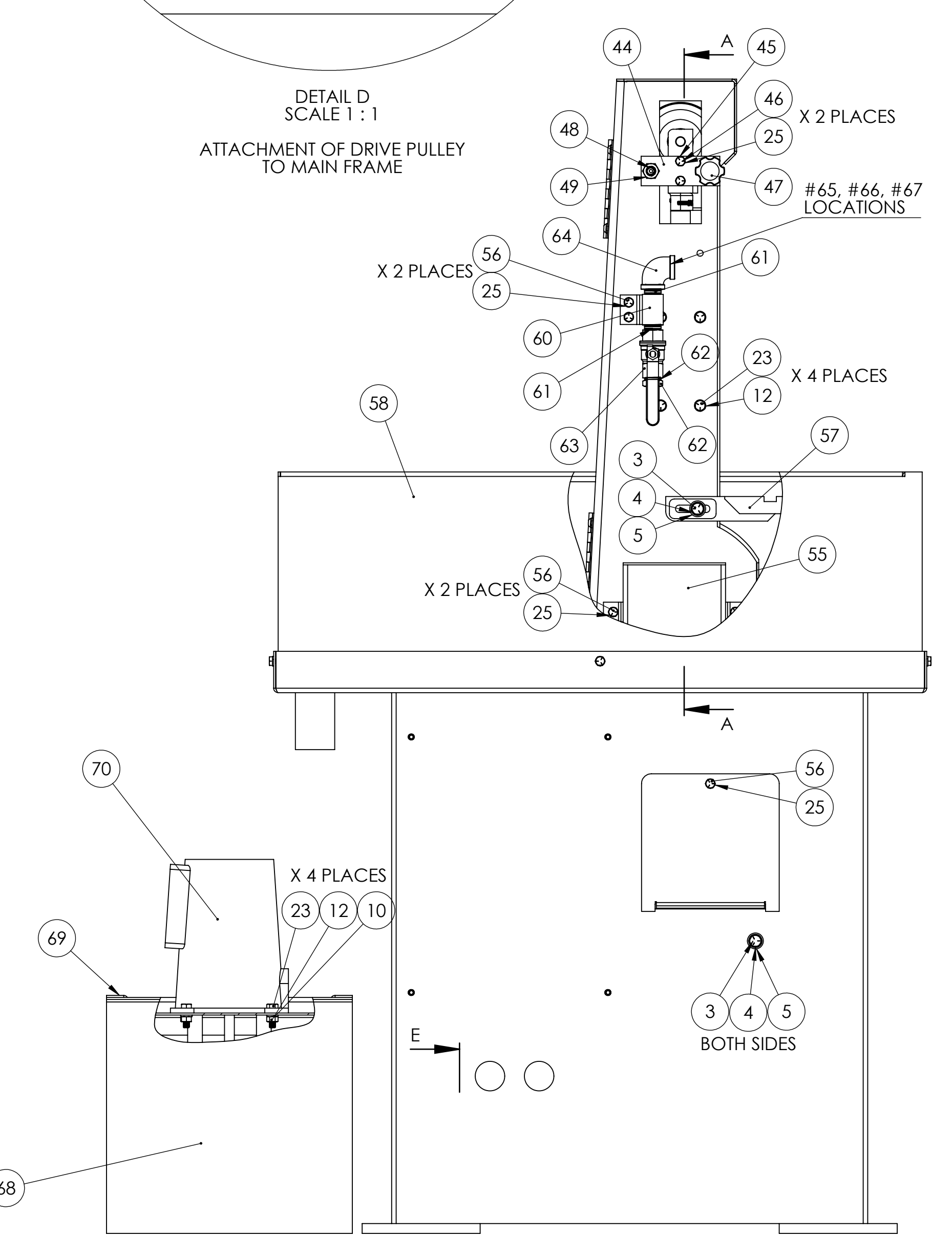
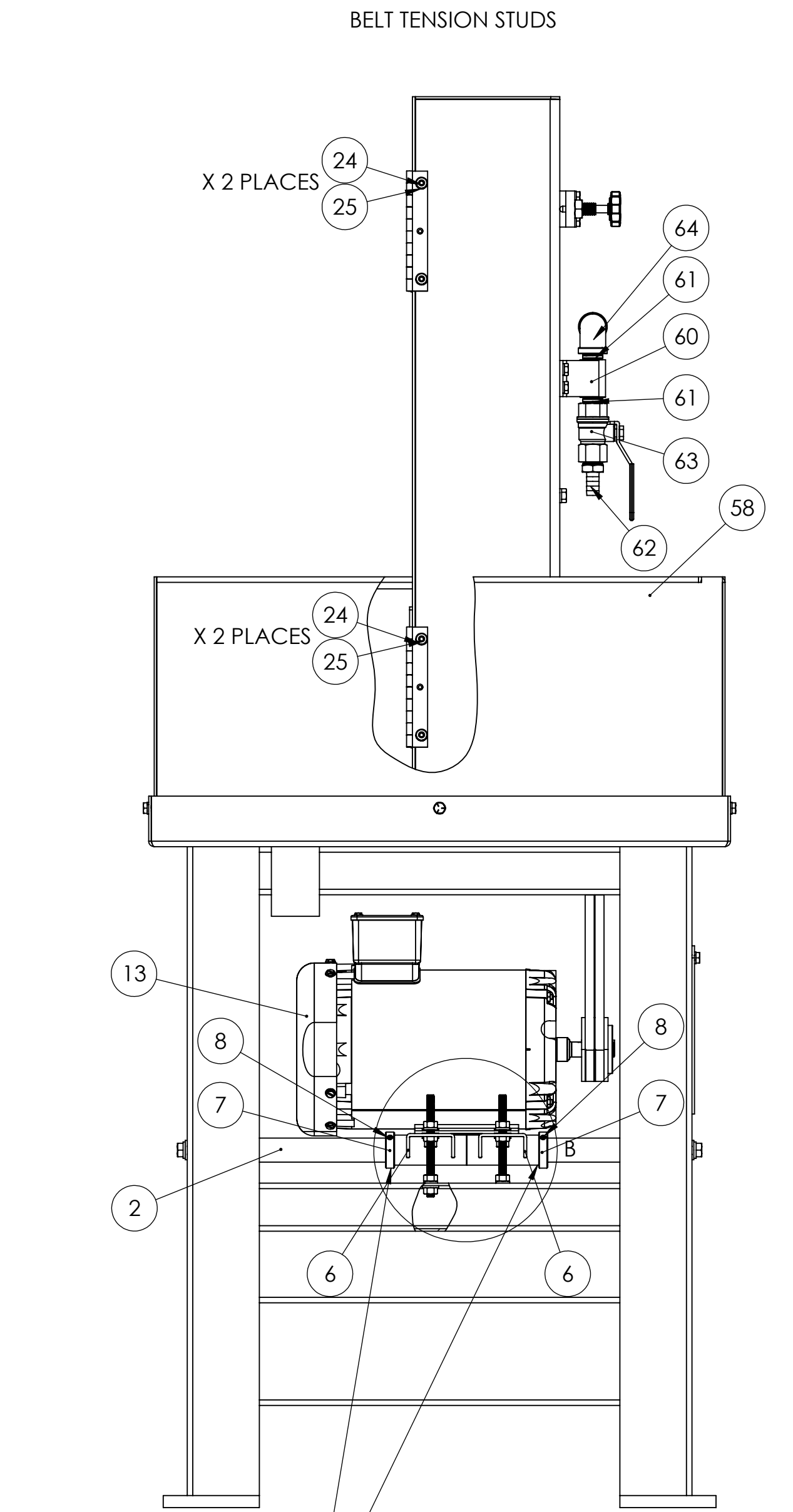
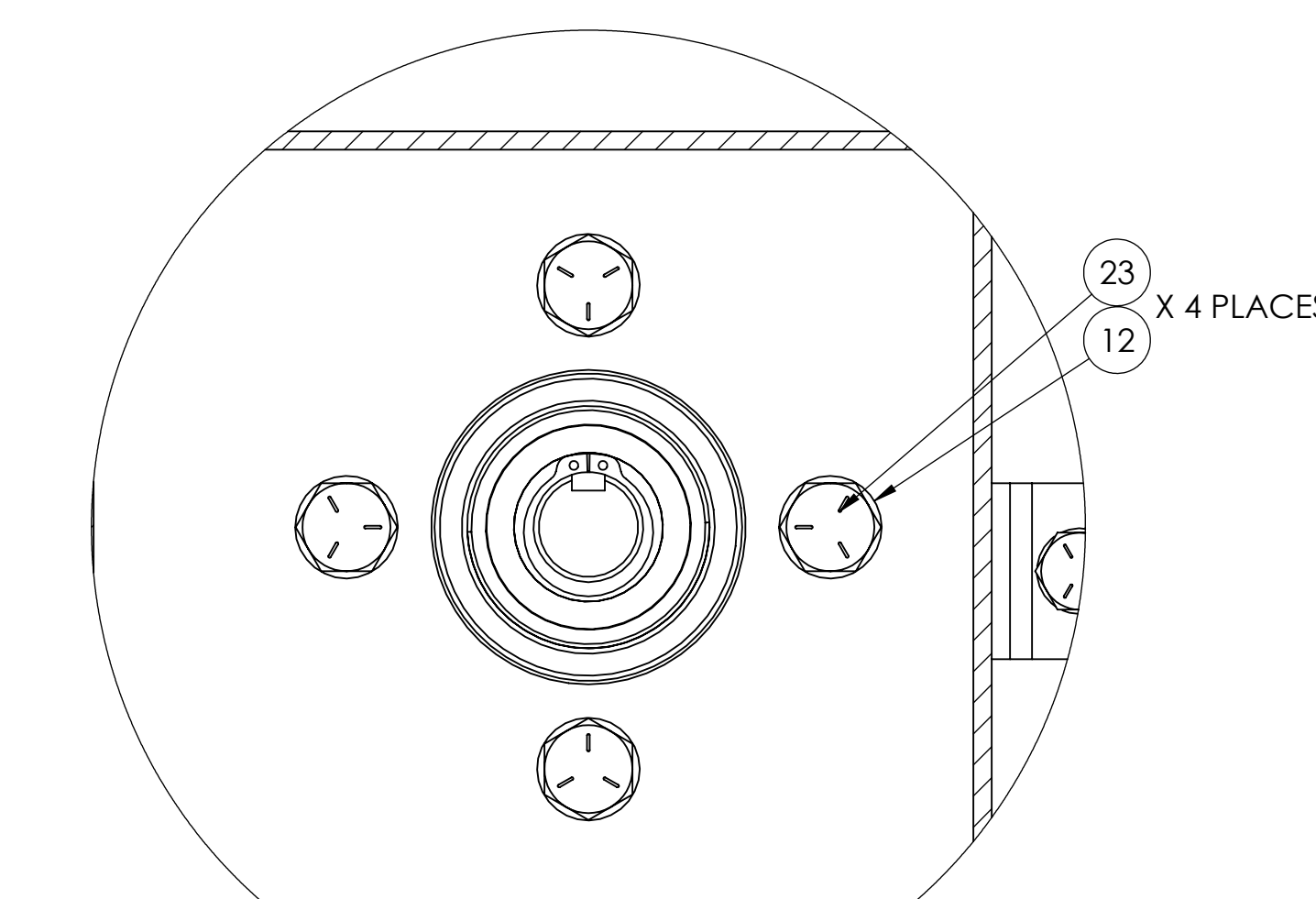
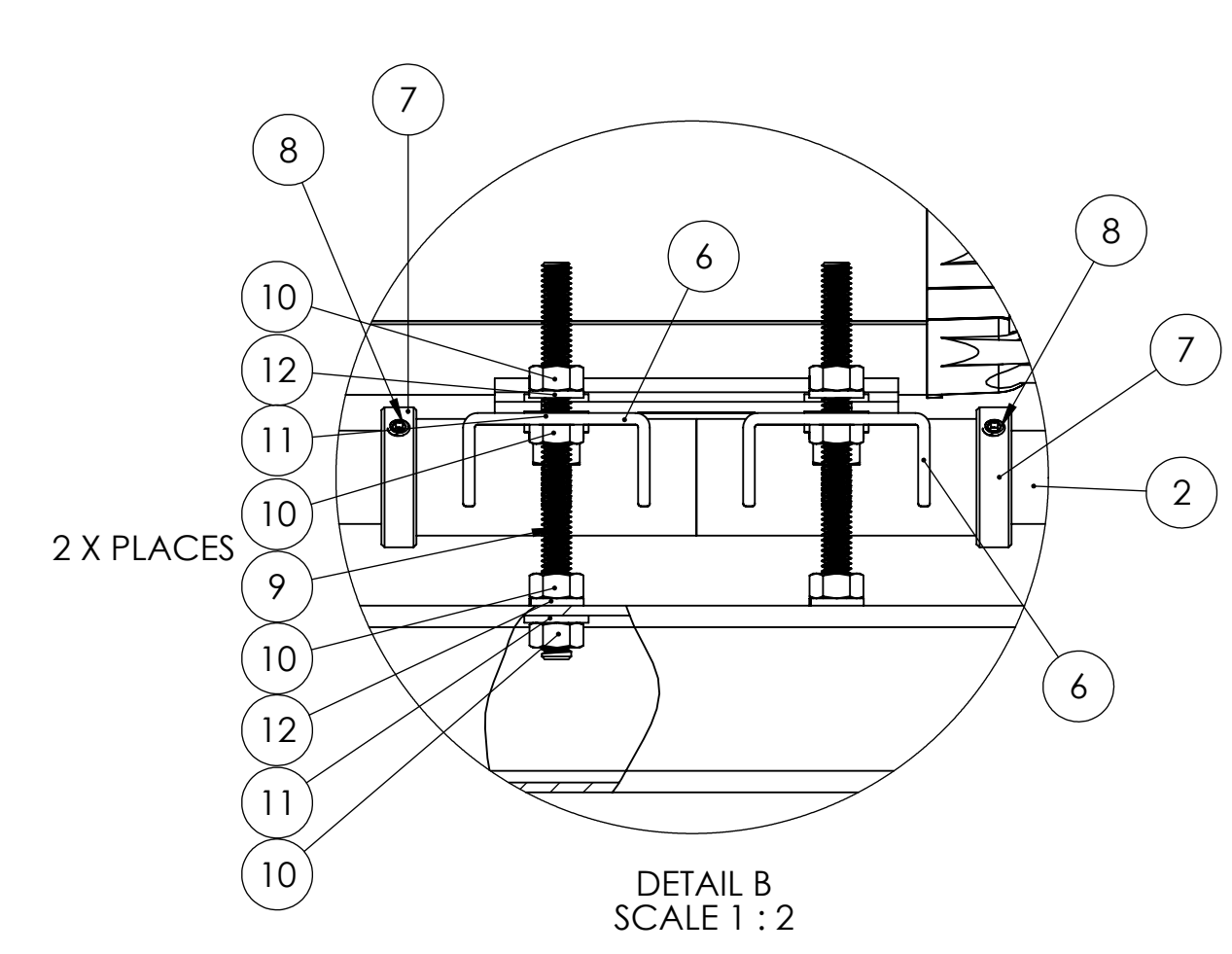
Worktable: the worktable has a slot for mounting fixtures and or a mitre gauge. Also, two mounting holes are provided on the side of the frame (27) to move the work table to different work heights

NOTE: KEEP THE WORK TABLE WITH A 1/8TH GAP BETWEEN THE TABLE AND THE SANDING BELT.

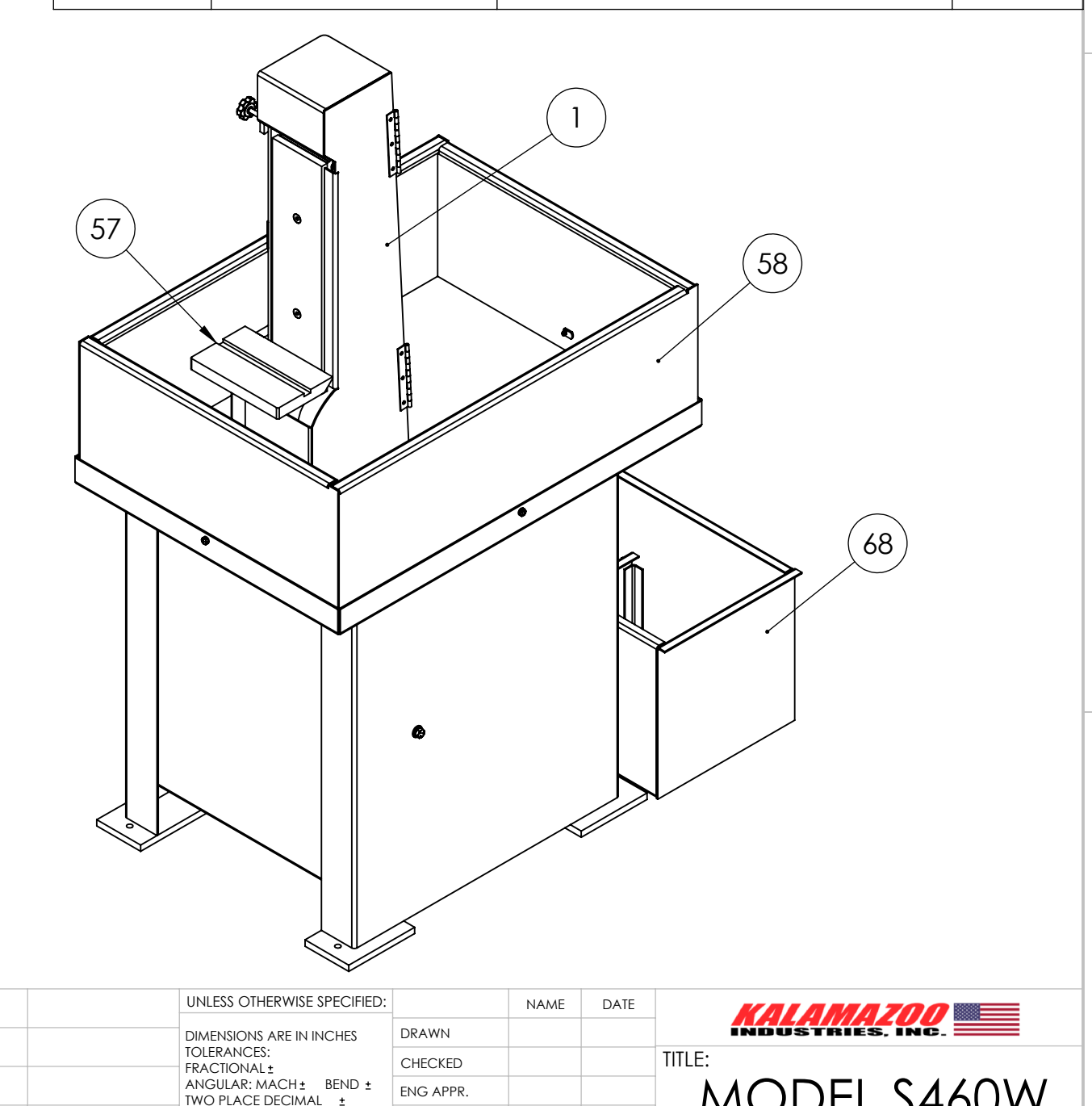
Coolant: use rust inhibiting collant. **Using straight water will rust sander components and will void machine warranty.** Consult your collant dealer for proper coolant selection.

Electrical: be sure incoming power matches machine wiring. NEMA enclosure must be punched for sealite fittings for incoming wire (**DRILL/PUNCH to suite**). AC voltage is 24 voltage at switch.

CAUTION: Voltage changes require wiring changes and setting at drive motor & pump motor, transformer and overloads. **WARRANTY DOES NOT COVER** unauthorized wiring changes/failures. **Consult and electrician if your motor familiar with electrics.**



ITEM NO.	PART NUMBER	DESCRIPTION	QTY.
1	716-044	STAND AND MAIN FRAME ASSEMBLY FOR S460W	1
2	700-046	S6MW, S660MW MOTOR MOUNT PIVOT SHAFT	1
3	HHC5037020	3/8-16 X 1-1/4 HHC5 GR5 Z	3
4	SLW2037	3/8 SPLIT L/W Z	3
5	UFW2037	3/8 USS F/W Z	3
6	690-014	RAIL, MOTOR MOUNT FOR S 460, S6, S8 SANDERS	2
7	123-016	S6 IDLER PULLEY LOCK COLLAR	2
8	SSKA025004	1/4-20 X 1/4 SOC SET KNURL PT.	2
9	RND-0.3125-18THRDX4.25	4-1/4 INCHES OF 5/16-18 THREADED ROD	2
10	FHN5031	5/16-18 FHN GR5 ZINC	18
11	UFW2031	5/16 USS F/W Z	13
12	SLW2031	5/16 SPLIT L/W Z	20
13	486-007	3HP FOR K8B, K10B, KM10, BG260H, S460W, S6M AND S612	1
14	HHC5031020	5/16-18 X 1-1/4 HHC5 GR 5 Z	5
15	701-039	SPINDLE, DRIVE FOR S460W SANDER	1
16	386-024	HOUSING, BEARING FOR S460W	1
17	044-007	K10 BEARING	1
18	044-001	K12 BEARING	1
19	641-007	RETAINING RING 1" FOR S6, S460W, S612 DRIVE SPINDLE	1
20	641-016	RETAINING RING FOR S6, S460W, S612	1
21	560-043W	DRIVE PULLEY (CAST IRON) FOR S460W	1
22	SSKA025006	1/4-20 X 3/8 SOC SET KNURL PT.	1
23	HHC5031016	5/16-18 X 1 HHC5 GR5 Z	12
24	BSCA025008	1/4-20 X 1/2 BSHCS	4
25	SLW2025	1/4 SPLIT L/W Z	15
26	291-018W	CAST IRON FRAME FOR S460W SANDERS	1
27	700-022W	TENSION SHAFT, IDLER YOKE, FOR S460W SANDER	1
28	ROLA025024	1/4 X 1-1/2 ROLL PIN	1
29	697-024	S6 BELT TENSION SPRING	1
30	960-002	YOKE FOR S4 SANDER	1
31	701-008	SPINDLE, IDLER FOR S4, S460 SANDERS	1
32	560-006	IDLER PULLEY S4 W BEARINGS FOR S45 AND S460	1
33	123-003	COLLAR FOR S4	1
34	EERR0.5	EERR1/2 1/2" E RETAINING RING	1
35	SSKA010004	10-24 X 1/4 SOC SET KNURL PT	2
36	455-003	TENSION RELEASE LEVER FOR S6 SANDER HEADS	1
37	HHT5031032	5/16-18x2 HEX HEAD TAP BOLT GR5 ZINC	1
38	BWVA031	5/16 BOWED SPRING WASHER 21/64	1
39	STNZ031	5/16-18 STOVER LOCK NUT ZINC-WAX	1
40	563-014	PLATEN FOR S460 SERIES	1
41	FSCA031016	5/16-18 X 1 FSHCS	2
42	CRMZ010024	10-24 X 1-1/2 COMBO ROUND M/S Z	1
43	697-011	TRACKING SPRING FOR S4	1
44	048-019	TRACKING BAR FOR S460	1
45	699-028	TRACKING BAR SPACER FOR S460 SANDERS	1
46	HHC5025016	1/4-20 X 1 HHC5 GR5 Z	2
47	441-014	TRACKING KNOB ASSEMBLY	1
48	SPPA050020	1/2-13 X 1-1/4 SPRING PLUNGER W BROWN DELRIN NOSE ALLOY	1
49	FJNZ050	1/2-13 F H JAM NUT Z	1
50	049-020	MOTOR PULLEY BUSHING FOR S460W, S6MW & S612	1
51	560-052	MOTOR PULLEY SHEAVE FOR S6MW, S612 AND S460W	1
52	049-019	BUSHING FOR SPINDLE V-BELT PULLEY FOR S460W, S6MW, S612, BG272	1
53	560-051	SPINDLE PULLEY SHEAVE FOR S6MW, S612 & S460W	1
54	051-003S460W	3V355 V-BELT FOR K10, KM10, S6MW & S460W	2
55	342-136	V-BELT GUARD FOR S460W SANDER	1
56	HHC5025008	1/4-20 X 1/2 HHC5 GR5 Z	5
57	829-034	CAST IRON WORK TABLE FOR S272, S460, AND BG448	1
58	342-111	S460W SPLASH GUARD	1
59	HHC5025012	1/4-20 X 3/4 HHC5 GR5 Z	4
60	389-004	COOLANT HOSE MOUNTING BRACKET ASSEMBLY W FLEXIBLE HOSE & FITTINGS	1
61	050CL40BLN	050CL40BLN 1/2 BLACK CLOSE NIPPLE	2
62	1020808C	102-0808C 1/2" MALE NTP TO 1/2" HOSE BRASS BARBED FITTING-STRAIGHT	1
63	912-030	JOM 100-703 BRONZE BALL VALVE FULL PORT-1/2	1
64	05015BL190I	05015BL190I 1/2 BLACK ELBOW 1/2" NPT THREADED	1
65	8450-27	CONNECTOR FOR 1/2" LINE-LOC HOSE	1
66	8450-22	1/2" LINE-LOC HOSE SEGMENT-12IN LONG	1
67	8550-225	2" GRAY FLARE NOZZLE FOR 1/2" LINE-LOC HOSE	1
68	716-011	COOLANT TANK ASSEMBLY FOR S460W, S6MW, S66MW, K12-14MS, K12-14W	1
69	041-114	1/4 TO 1/2 H.P. COOLANT PUMP MOUNTING BRACKET FOR WET SANDERS	1
70	577-002	1/4HP COOLANT PUMP AND MOTOR	1



PROPRIETARY/CONFIDENTIAL
THE INFORMATION CONTAINED IN THIS DRAWING IS THE SOLE PROPERTY OF KALAMAZOR. IT IS TO BE USED FOR THE MANUFACTURE OF THE PARTS AND ASSEMBLIES IDENTIFIED HEREIN. NO OTHER REPRODUCTION OR DISSEMINATION OF THIS INFORMATION IS PERMITTED WITHOUT THE WRITTEN PERMISSION OF KALAMAZOR. COMPANY NAME NEEDS TO BE PROTECTED.

UNLESS OTHERWISE SPECIFIED:
DIMENSIONS ARE IN INCHES
TOLERANCES:
FRACTIONS: ±0.005
DECIMALS: ±0.005
THREE PLACE DECIMAL: ±0.001
INTERFERENCE GEOMETRIC TOLERANCES PER ASME Y14.5

DATE: _____
DRAWN BY: _____
CHECKED BY: _____
ENG APPR: _____
MFG APPR: _____
D.A. COMMENTS: _____

TITLE: **MODEL S460W WET SANDER**
SIZE: DWG. NO. **E S460W** REV _____
SCALE: 1:5 WEIGHT: _____ SHEET 1 OF 1

APPICATION: _____ USED ON: _____ FINISH: _____
DO NOT SCALE DRAWING