

KI **KALAMAZOO**
INDUSTRIES, INC.
KALAMAZOO, MI

PH: (269) 382-2050

www.kalamazooind.com

**S14D 14" X 103"
BELT SANDER
MANUAL**



MADE IN USA



KI **KALAMAZOO**
INDUSTRIES, INC.
KALAMAZOO, MI

PH: (269) 382-2050

www.kalamazooind.com

WARRANTY

All products are guaranteed for a period of one year from receipt of order to the original purchaser, against defects in material workmanship under normal use. Electric motors are warranted by the motor manufacturer for a period of one year and will be repaired by the nearest motor repair station. If non-repairable, they will be replaced by Kalamazoo Industries.

Please call for instructions (269) 382-2050.

RETURN POLICY

Authorization must be obtained before returning merchandise. Please call our customer service department for a return authorization number (269) 382-2050. Please include with your return a copy of your invoice or packing slip. All material must be new and unused in the original packaging. Material must be sent back prepaid (unless otherwise indicated) by Kalamazoo Industries. Credit upon inspection at Kalamazoo Industries. All returns will be subject to a 10% restock charge. Used merchandise is non-returnable. No returns will be accepted after one year of invoice date.

BELT SANDER SAFETY

- READ THE OPERATING INSTRUCTIONS BEFORE RUNNING MACHINE.
- ALWAYS WEAR SAFETY GLASSES OR A FULL FACE SHIELD FOR PROTECTION.
- KEEP HANDS CLEAR OF THE SANDING AREA.
- NEAR WEAR GLOVES OR LOOSE FITTING CLOTHES WHEN OPERATING THIS MACHINE.
- ALWAYS KEEP HAIR TIED BACK OR COVERED.
- LET MACHINE ROTATION COME TO A FULL STOP BEFORE CHANGING BELT.
- KEEP SAFETY GUARDS IN PLACE. DO NOT ALTER GUARD OR MACHINE IN ANYWAY. ANY ALTERATIONS TO GUARDS OR MACHINE COULD CAUSE SERIOUS INJURY.
- ALL BELT SANDERS SHOULD BE OPERATED IN A WELL-VENTILATED AREA. THE DUST CREATED WHEN SOME MATERIALS ARE SANDED CAN BE HARMFUL. DUST MASKS ARE RECOMMEND AS A PRACTICAL MEAN OF MINIMIZING DUST INHALATION. FUMES FROM OTHER OTHER SOURCES CAN ALSO CAUSES FIRES WHEN INTACT WITH SANDING SPARK.
- SPARKS CREATED BY SANDING SHOULD BE DIRECTED DOWNWARD AND AWAY FROM THE FACE AND BODY. DON NOT GRIND NEAR FLAMMABLE MATERIAL.
- ELECTRIC SANDING MACHINES ARE NOT INTENDED FOR USE IN OR NEAR WATER. THIS INCLUDES AN OPERATOR STANDING ON A WET FLOOR OR WORKING AROUND CONTAINERS OF WATER OR OTHER CONDUCTIVE LIQUIDS.

KI **KALAMAZOO** INDUSTRIES, INC. KALAMAZOO, MI

PH: (269) 382-2050

www.kalamazooind.com

WARNING!

TO REDUCE THE RISK OF FIRE OR SHOCK HAZARD,
DO NOT EXPOSE THIS EQUIPMENT TO RAIN, ANY LIQUID OR MOISTURE.

INSPECTION

If these goods are damaged in transit, the **DELIVERING TRANSPORTATION COMPANY** is required by law to make notation of damages on the freight bill. If in your opinion, there may be concealed damage, they are required to make an inspection after goods are unpacked. Transportation rates are made in proportion to damage. Therefore, the carrier and **NOT** the shipper should be charged with any loss or damage. Any claim should be filled with the delivering **TRANSPORTATION COMPANY. PLEASE DO NOT RETURN GOODS TO US WITHOUT OUR RGA NUMBER AND SHIPPING INSTRUCTIONS.**

NOTE: SEE NEXT PAGE FOR RETURN POLICY AND WARRANTY.

IMPORTANT

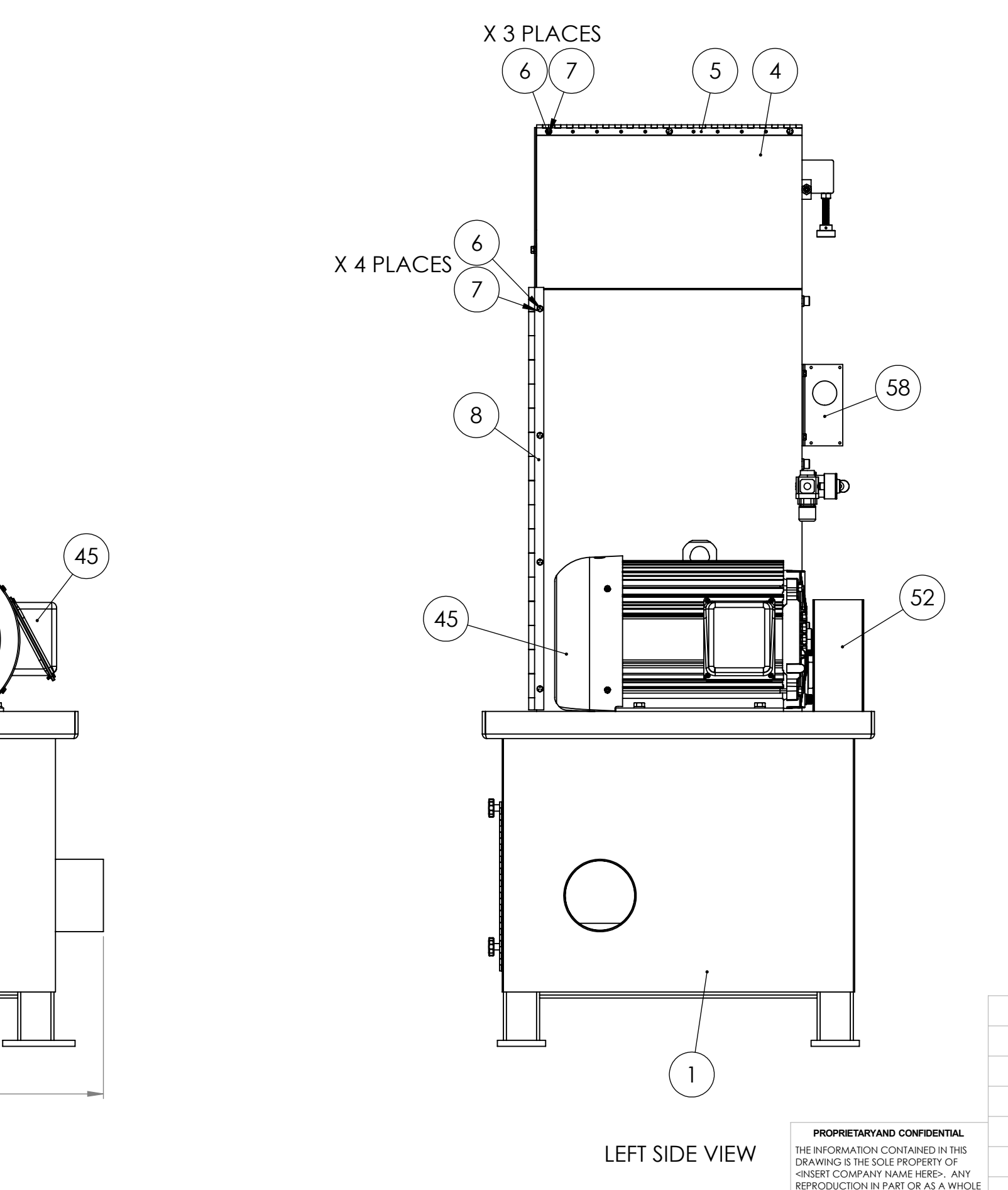
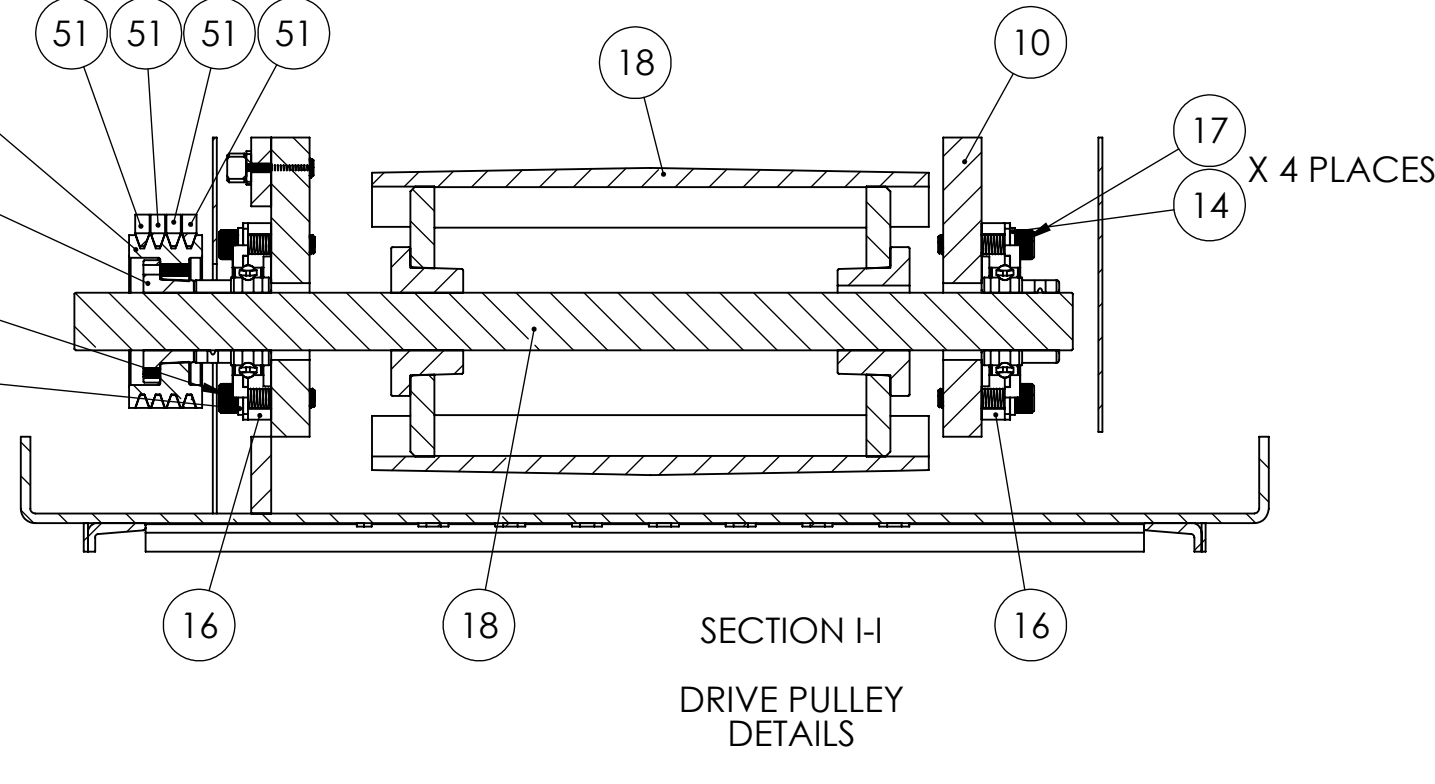
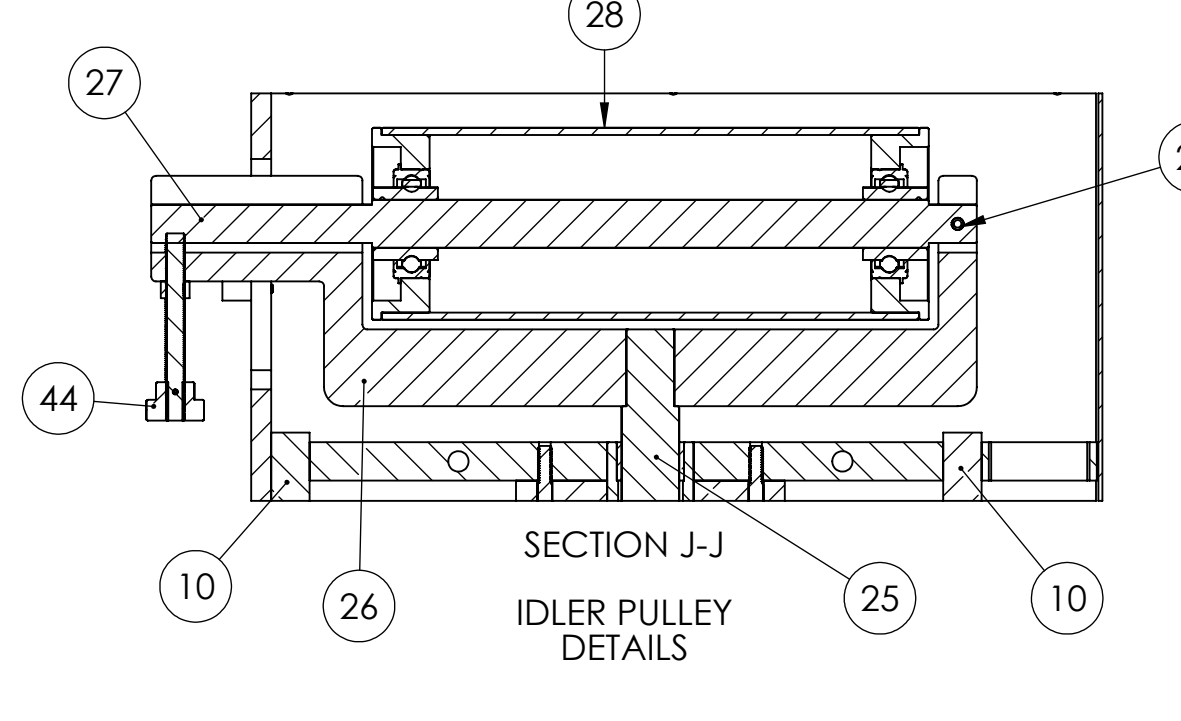
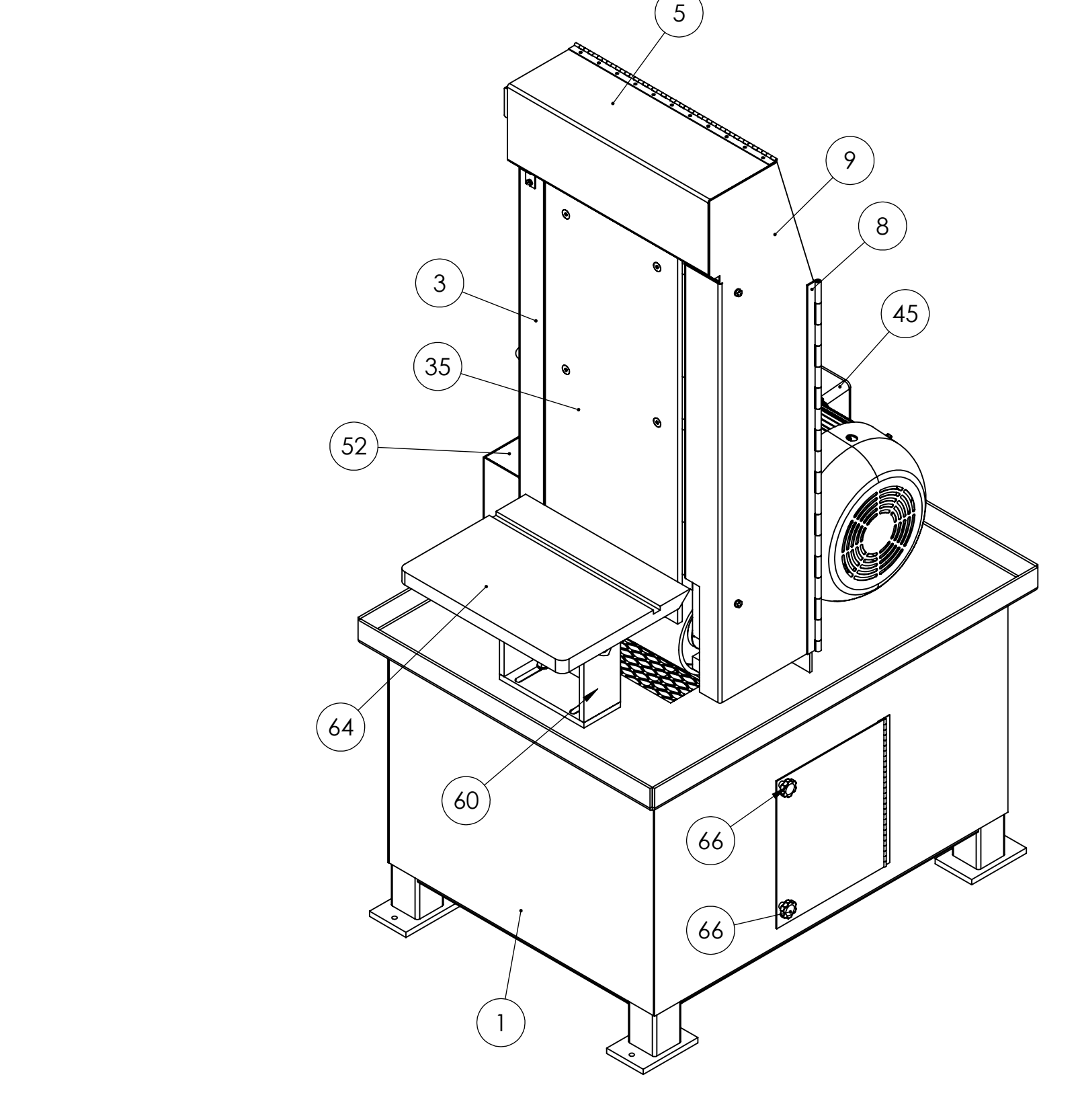
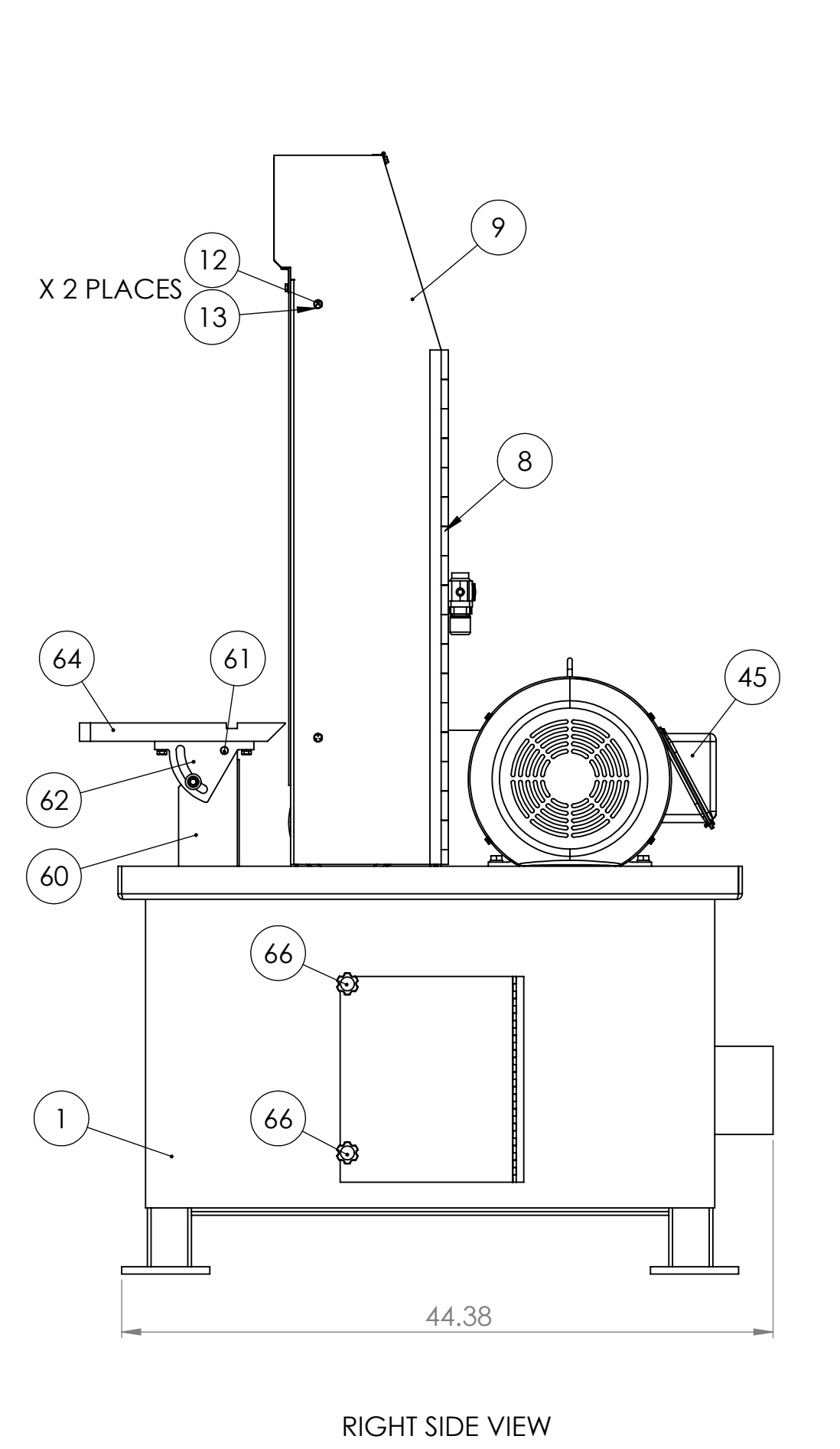
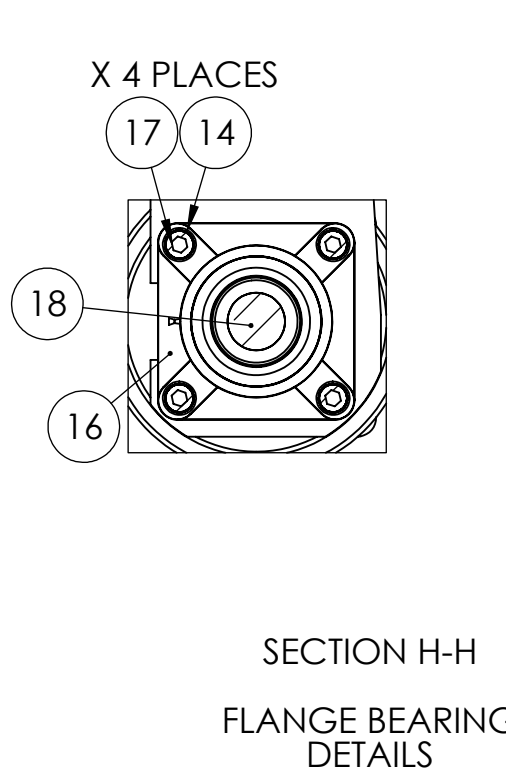
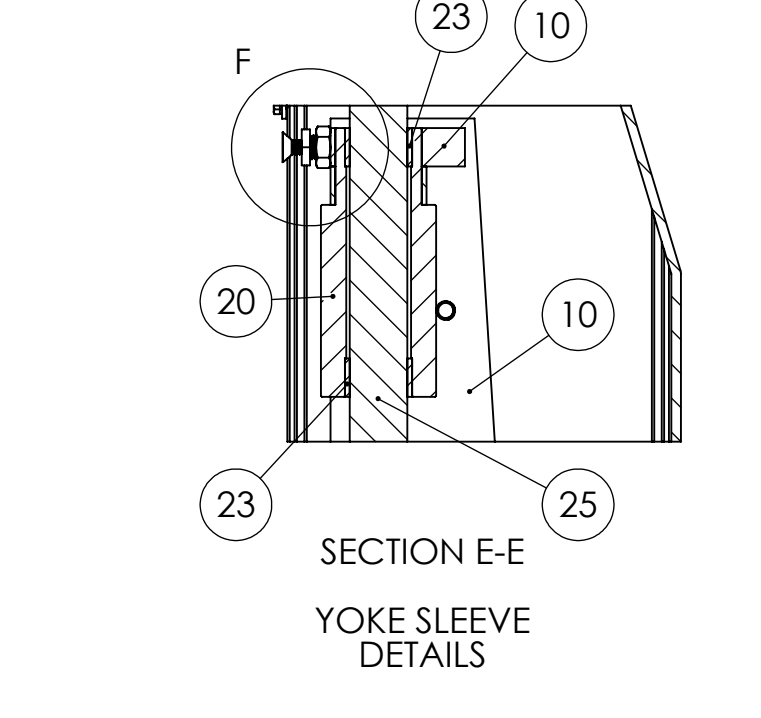
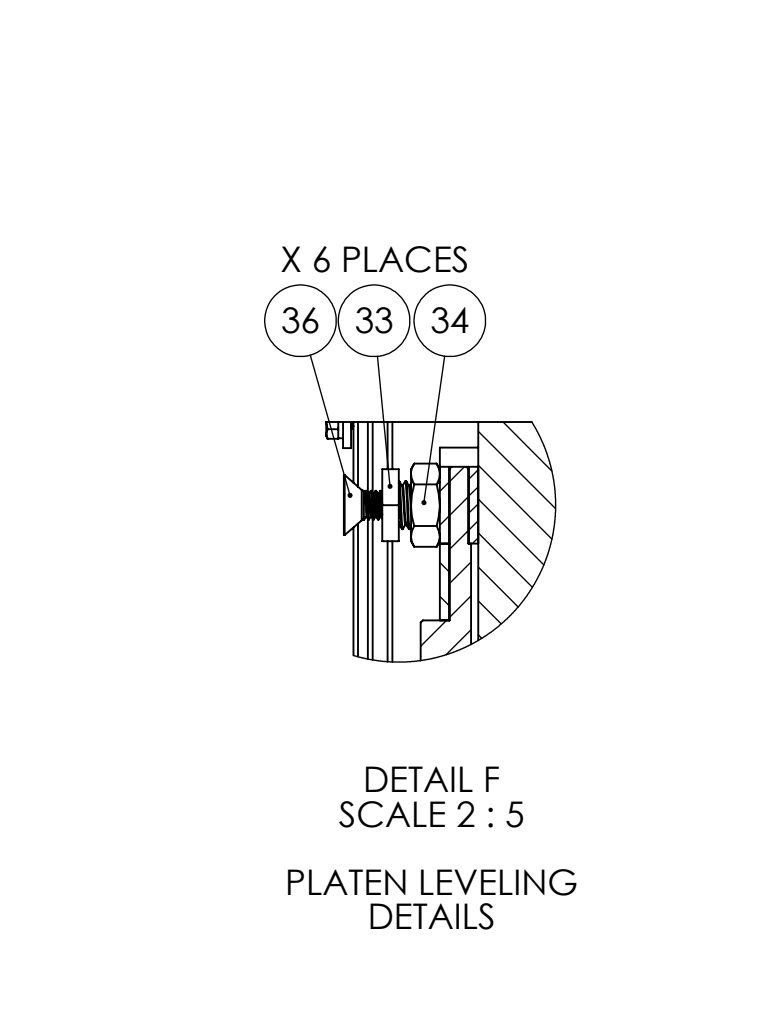
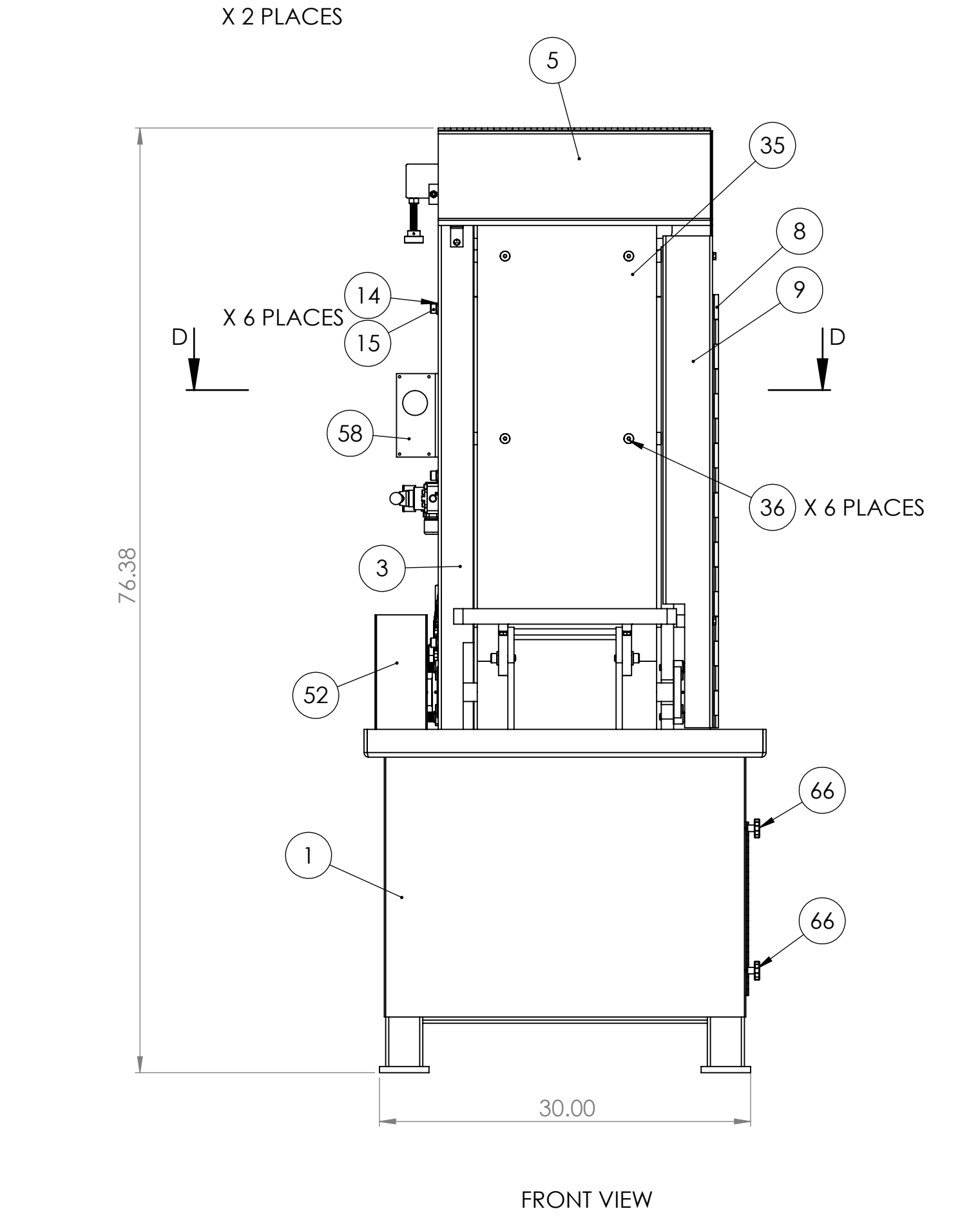
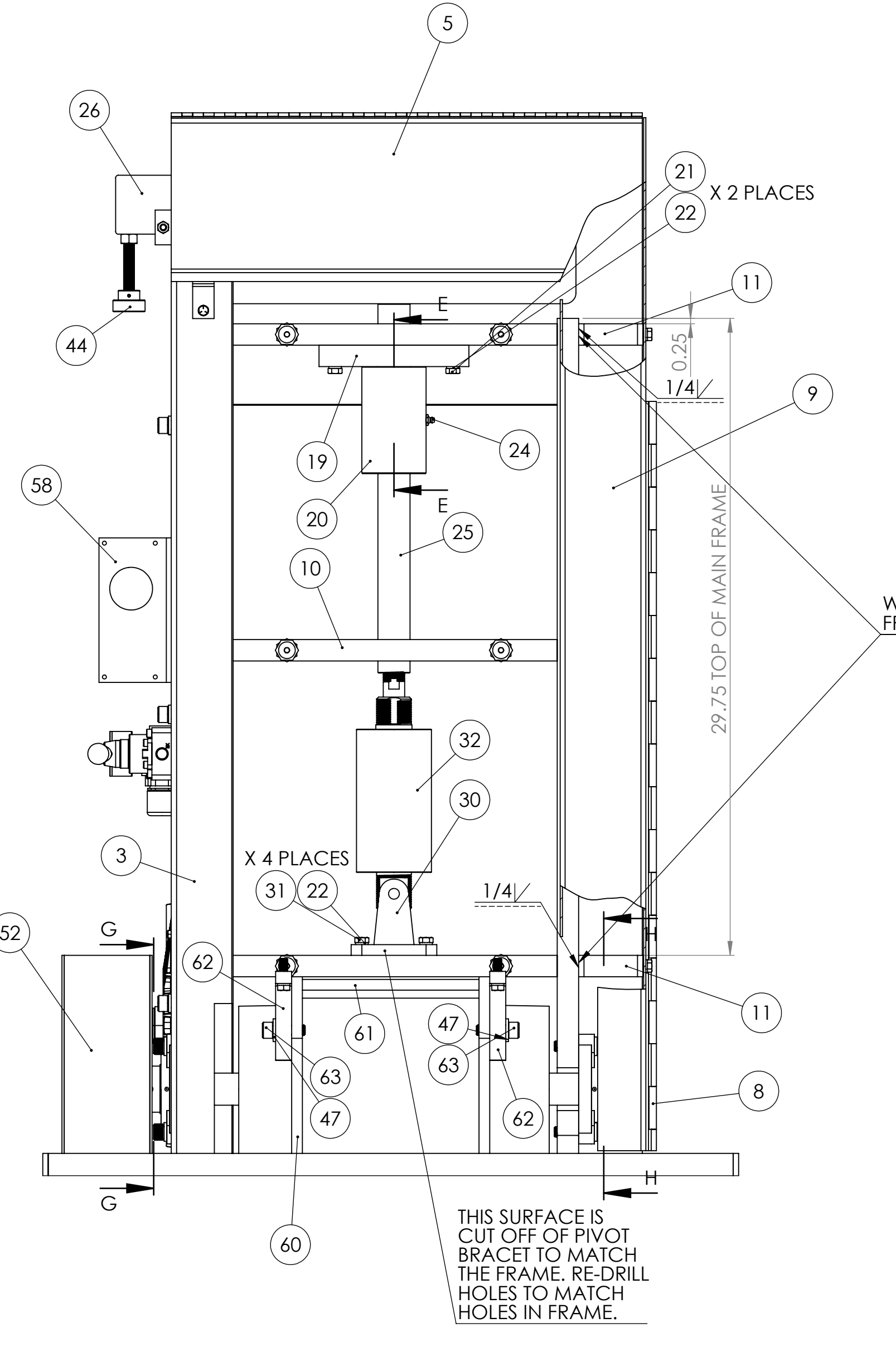
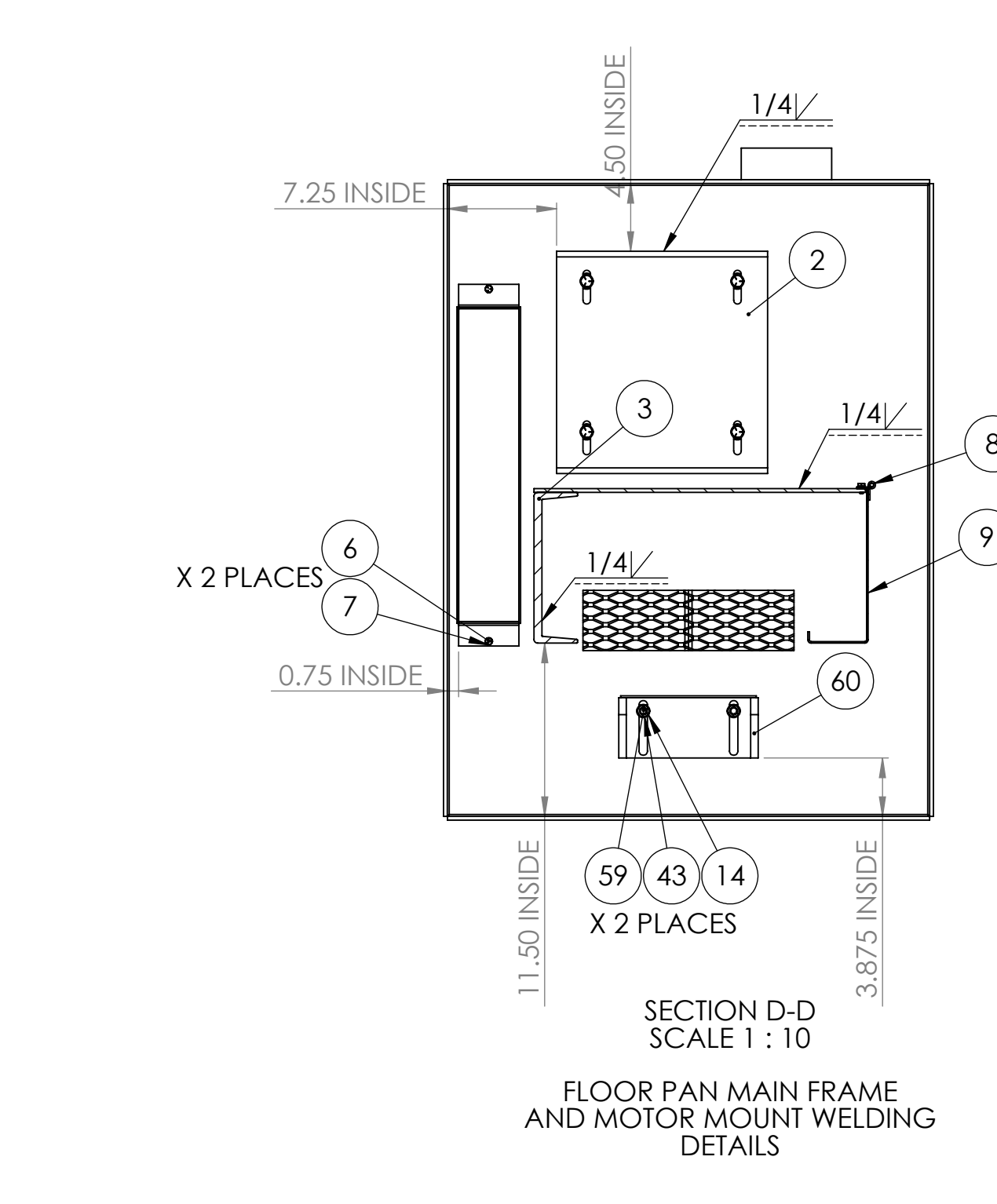
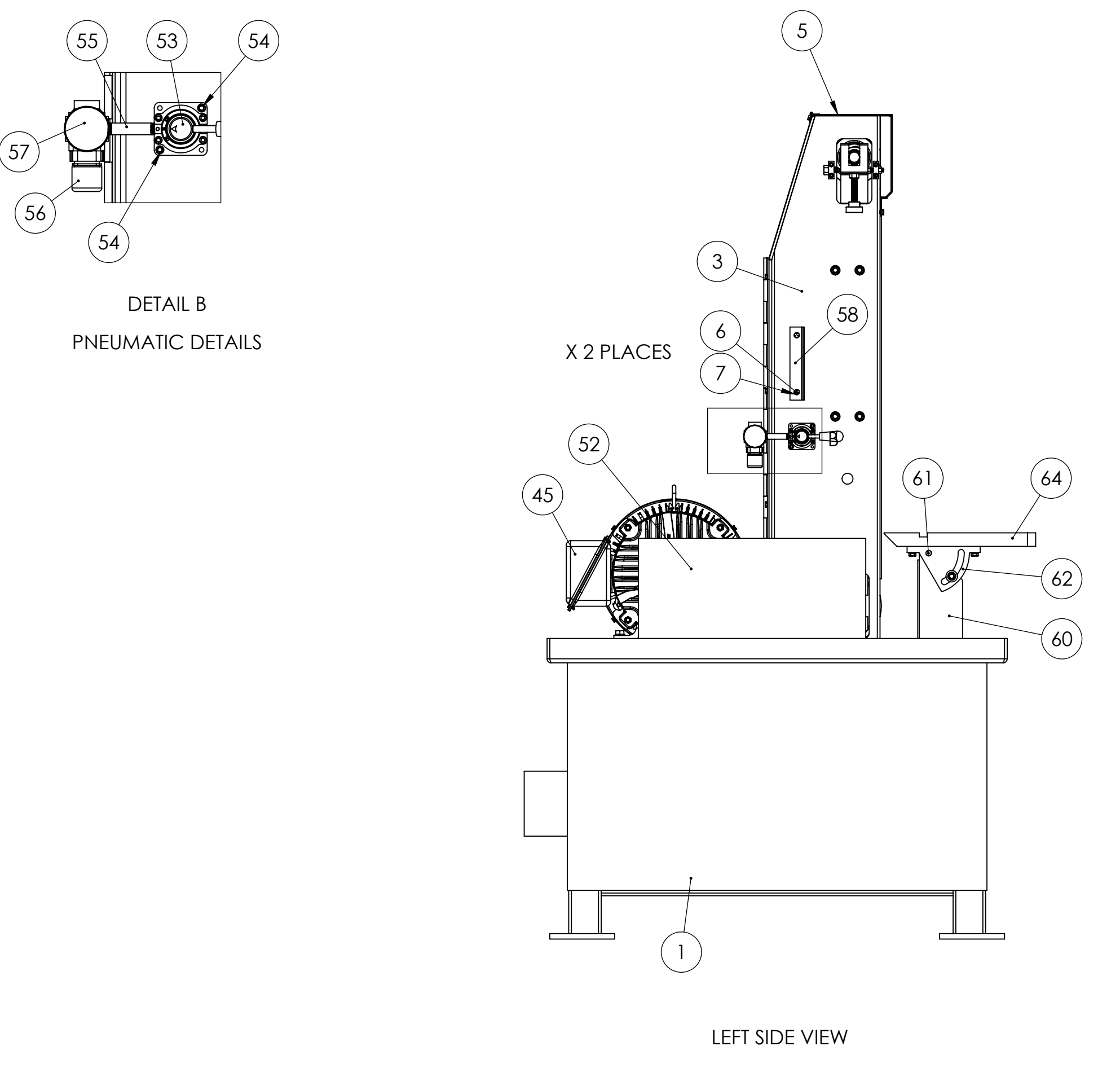
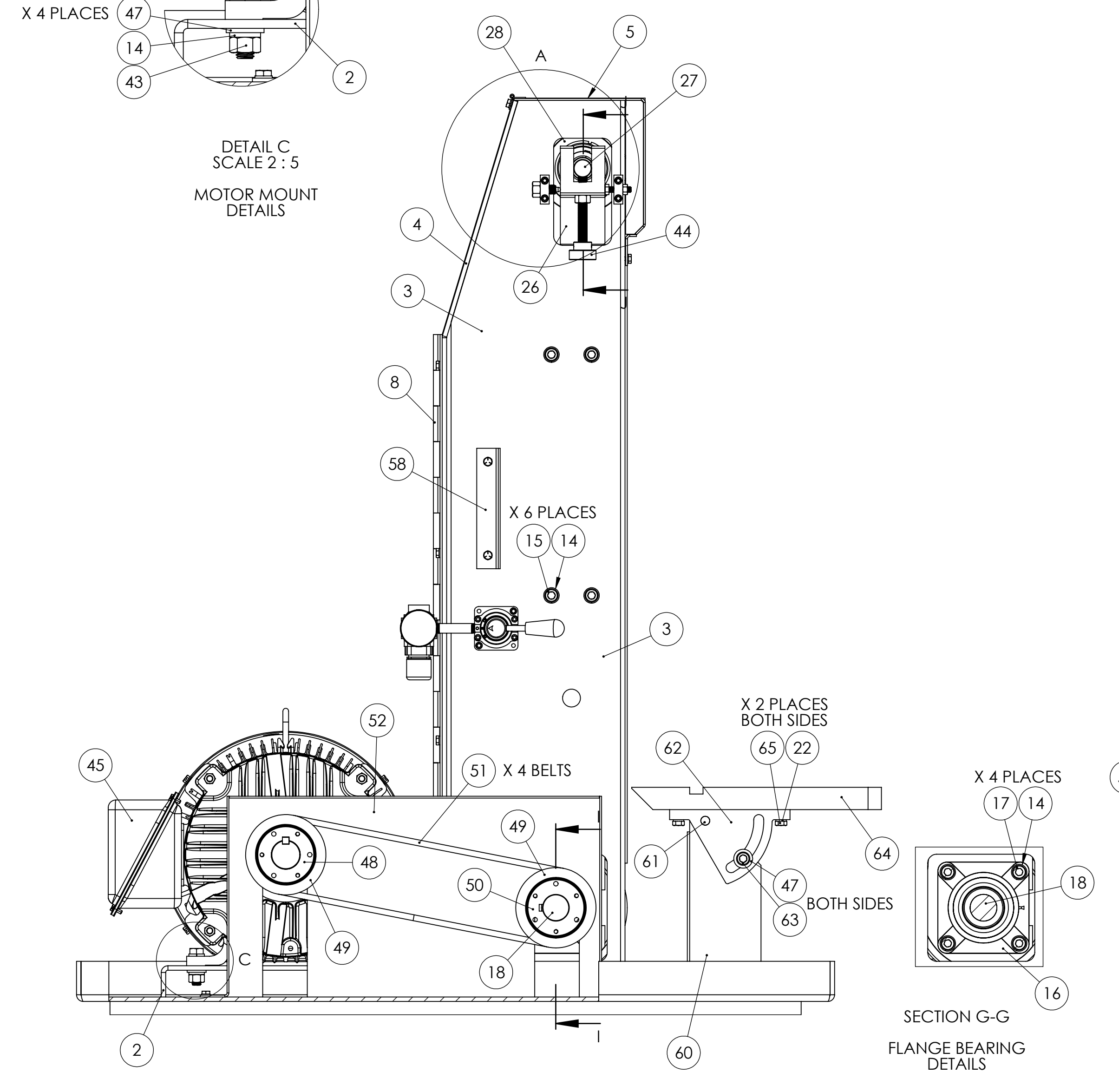
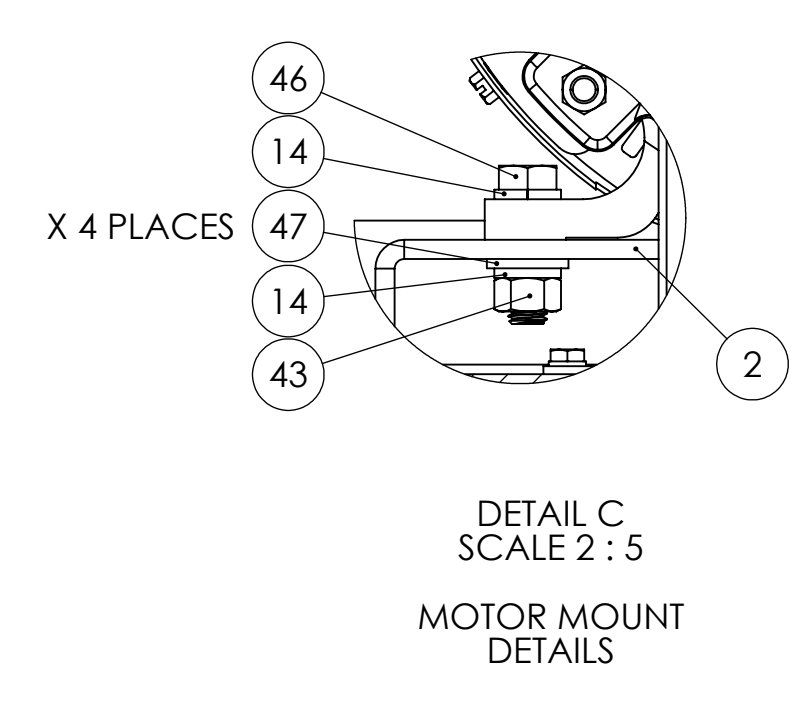
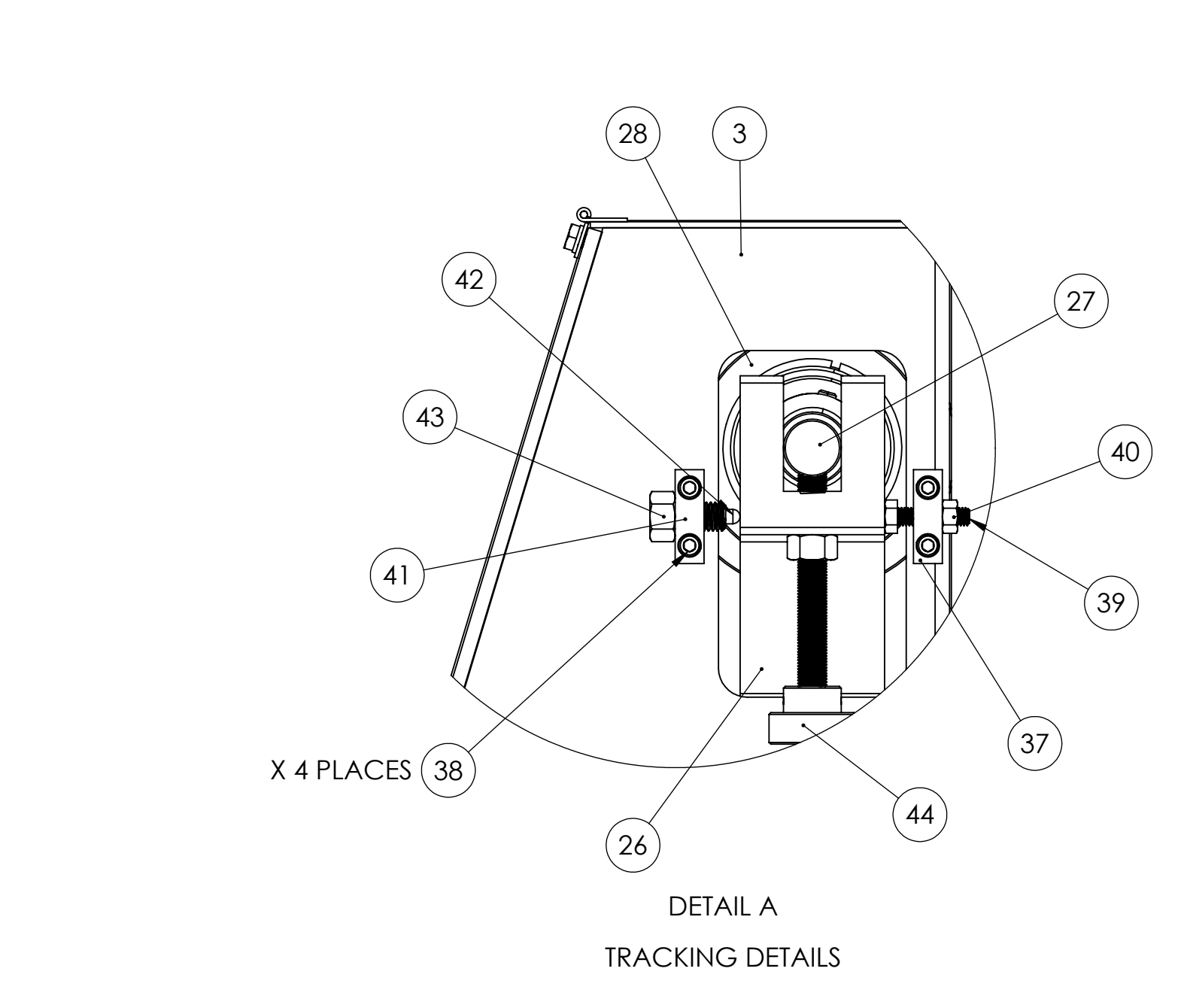
Read Operating Instructions before using equipment.

TROUBLE SHOOTING AND TRACKING PROBLEMS

- Drive pulley lost its crown (curvature of pulley)
- Sanding belt are not spliced square.
- Upper pulley assembly not square to platen. (Use carriage bolts to square yoke with platen.)

OPERATING INSTRUCTIONS

1. CHECK FOR CORRECT OF PHASE AND VOLTAGE BEFORE RUNNING THE MACHIN. **CAUTION: VOLTAGE CHANGES FROM FACTORY SETTING REQUIRE WIRING CHANGES IN ALL MOTOR JUNCTION BOXES AND CORRECT CONTACTOR AND OVERLOAD. IF UNFAMILIAR WITH ELECTRICAL WIRING PLEASE CONSULT AN ELECTRICIAN. ELECTRICAL FAILUTRES DUE TO INCORRECT VOLTAGE CHANGES ARE NOT COVERED UNDER WARRANTY.**
2. BELT TENSION: CONNECT SHOP AIR TO REQUATOR. USE 40PSI GAUGE PRESSURE FOR SANDING BELT TENNISON. **DO NOT USE OVER 50PSI AIR PRESSURE**, OVER PRESSURE WILL CAUSE SANDING BELT TO STRECH. USE AIR VALVE TO TENSION AND RELEASE TENSION OF SANDING BELT.
3. BELT TRACKING: AFTER TENSIONING THE BELT YOU NEED TO USE THE **JOG** SWITCH AND TRAKING KNOB TO TRACK THE BELT. SEVERAL PUSHES OF THE **JOG** SWITCH MAY BE REQUIRED TO CENTRALIZED THE BELT. WHILE **JOG** SWITCH IS PUSHED IN USING THE TRACKING KNOB TO INCREASE AND DECREASE PULLEY ANGLE. CLOCKWISE TURNING OF KNOB TILTS PULLEY UPWARD AND SANDING BELT AWAY FROM MACHINE FRAME. COUNTER-CLOCKWISE TILTS PULLEY DOWN AND SANDING BELT TOWARD MACHINE FRAME. AFTER BELT HAS BEEN TRACKED VIA **JOG** MODE AND TRACKING KNOB, THE SWITCH MAY THEN BE TURNED TO THE POSITION. **KEEP HANDS CLEAR OF THE BELT WHEN TURNING THE MACHINE ON.**
4. BELT CHANING: TURN THE MACHINE **OFF**, RELEASE AIR PRESSURE WITH CONTROL VALVE. UPPER PULLEY WILL RETRACT TO RELEASE BELT TENSION. OPEN GUARD DOOR AND REMOVE SANDING BELT. REPLEASE WITH NEW BELT. CHECK INSIDE NEW BELT, SOME BELTS WILL HAE ROTATION ARROWS INSIDE. CLOSE DOOR SEURELY. MOVE BELT TENSION CONTROL VALVE TO TENSION THE NEW BELT. USE **JOG** SWITCH TO BE SURE OF TRACKING BEFORE USING START BUTTING TO RUN.
5. WORK TABLE: 8" X 12" CAST IRON WORKTABLE SHOULD BE KEPT WITHIN 1/16" OF SANDING BELT. **(ONLY MODEL S10D & S10W COME WITH WORK TABLE).**



ITEM NO.	PART NUMBER	DESCRIPTION	QTY.
1	716-007D	STAND FOR S14D VERTICAL STAND	1
2	556-069	MOTOR PLATE FOR S14D AND S14W SANDERS	1
3	125-001VERT	CHANNEL FRAME SUPPORT FOR S14D AND S14W SANDERS	1
4	125-001A	CHANNEL FRAME SUPPORT FOR S14D AND S14W SANDERS	1
5	342-154	GUARD, TOP FOR S14D SANDER	1
6	HHC5025008	1/4-20 X 1/2 HHCS GR5 Z	12
7	SLW2025	1/4 SPLIT L/W Z	12
8	147-007HINGE	HINGE FOR S14D AND S14W SIDE DOOR	1
9	147-007	SIDE DOOR FOR S14D	1
10	291-012	PLATEN SUPPORT FRAME FOR S14 SANDERS	1
11	S10-S14FRAMESTANDOFF	FRAME STAND-OFF FOR S10 AND S14 SANDERS	2
12	HHC5031008	5/16-18 X 1/2 HHCS GR5 Z	2
13	SLW2031	5/16 SPLIT L/W Z	2
14	SLW2050	1/2 SPLIT L/W Z	24
15	SHCA050028	1/2-13 X 1-3/4 SHCS	6
16	044-013	4 BOLT FLANGE BRG 1/2 IN FOR S10, S14 DRIVE PULLEY	2
17	SHCA050032	1/2-13 X 2 SHCS	8
18	560-041	DRIVE PULLEY WITH SPINDLE FOR S14 SANDERS	1
19	556-047	PLATE, SLEEVE BUSHING FOR S10 AND S14	1
20	714-005	SLEEVE, YOKE SHAFT FOR S10, S14	1
21	HHC5037032	3/8-16 X 2 HHCS GR5 Z	2
22	SLW2037	3/8 SPLIT L/W Z	10
23	RLB AA-1704-15	AA-1704-15 BRONZE BUSHING 1-1/2 X 1-3/4 X 1	2
24	ZERK012000	1/8-27 X 11/16 STRT LUBE FITTING	1
25	700-010	SHAFT, YOKE FOR S14 SANDERS	1
26	960-009	YOKE, FOR S14 SANDERS	1
27	701-030	SPINDLE, IDLER FOR S14 SANDERS	1
28	560-028	IDLER PULLEY W BEARINGS FOR S14 SANDERS	1
29	ROLA031040	5/16 X 2-1/2 ROLL PIN	1
30	1-34-65	SWIVEL BRACKET & PIN FOR 2-1/2 AND 3-1/4 CYLINDER SERIES O CYLINDERS	1
31	HHC5037024	3/8-16 X 1-1/2 HHCS GR5 Z	4
32	131-013	0-3-1/4 X 2 FLAIRLINE CYLINDER FOR S14 SANDERS	1
33	696-018	SCREW, LEVELING FOR S14 SANDERS	6
34	FJNZ042	5/8-11 F H JAM NUT Z	6
35	563-006	PLATEN FOR S14 SANDERS	1
36	FSCA037016	3/8-16 X 1 FHCS	6
37	053-009	TRACKING BLOCK- 5/16 THREADED HOLE	1
38	SHCA025016	1/4-20 X 1 SHCS	4
39	HHC5031020	5/16-18 X 1-1/4 HHCS GR 5 Z	1
40	FHN5031	5/16-18 FHN GR5 ZINC	1
41	053-009B	TRACKING BLOCK- 1/2-13 THREADED HOLE	1
42	SPPA050020	1/2-13 X 1-1/4 SPRING PLUNGER W BROWN DELRIN NOSE ALLOY	1
43	FHN5050	1/2-13 FHN GR5 Z	7
44	441-016ASSY	TRACKING KNOB ASSEMBLY FOR S8 AND S10 SANDERS	1
45	486-038	20HP MOTOR FOR K20FS-20, K26S, S14 SANDERS	1
46	HHC5050028	1/2-13 X 1-3/4 HHCS GR5 Z	4
47	UFW2050	1/2 USS F/W Z	6
48	049-023	SPINDLE PULLEY BUSHING FOR S14 SANDER	1
49	560-058	SPINDLE PULLEY SHEAVE FOR K20SSF-20HP AND KM20-22/20HP, MOTOR AND SPINDLE PULLEY SHEAVE FOR S10 AND S14 SANDERS	2
50	049-069	MOTOR AND SPINDLE PULLEY BUSHING FOR S10 AND S14 SANDERS	1
51	051-010	V-BELT FOR S10D AND S10W SANDERS	4
52	342-157	GUARD, BELT FOR S14 VERTICAL SANDERS	1
53	912-014	1/4 WAY VALVE 3P ROTARY HAND VALVE	1
54	SHCA025024	1/4-20 X 1-1/2 SHCS	2
55	02530040BLN	02530040BLN 1/4 X 3 BLACK PIPE NIPPLE	1
56	R72G2AKRMM	R72G2AKRMM 1/4" REGULATOR	1
57	18-013-212	18-013-212 1.5- 1/8 CBM-O-160	1
58	041-112	SWITCH BRACKET FOR E2PB BUTTON ENCLOSURE	1
59	HHC5050024	1/2-13 X 1-1/2 HEX HEAD CAP SCREW	2
60	711-013	SUPPORT, TABLE S10 AND S14 SANDERS	1
61	RND-0.5CF1018X10.75	10-3/4 INCHES OF 1/2 RND CRS C1018	1
62	831-014	TRUNNION, TABLE FOR S14 SANDERS	2
63	SHCA0500024	1/2-13 X 1-1/2 SHCS	2
64	829-023	TABLE, WORK FOR S10 AND S14 SANDERS	1
65	HHC5037020	3/8-16 X 1-1/4 HHCS GR5 Z	4
66	441-015	907B-2500-1.005 1/4 THUMBSCREW 1-1/2 DIA	2

UNLESS OTHERWISE SPECIFIED:
DIMENSIONS ARE IN INCHES
TOLERANCES:
FRACTIONS ± .005
DECIMALS ± .005
THREE PLACE DECIMAL ± .001
DIA.
INTERFERENCE GEOMETRIC TOLERANCES PER
ASME Y14.5

DATE: _____
DRAWN: _____
CHECKED: _____
ENG APPR: _____
MFG APPR: _____
D.A.
COMMENTS:

PROPRIETARY/CONFIDENTIAL
THE INFORMATION CONTAINED IN THIS DRAWING IS THE SOLE PROPERTY OF KALAMAZOO. IT IS TO BE USED ONLY FOR THE PURPOSES AND IN THE MANNER SPECIFIED HEREIN. ANY REPRODUCTION IN PART OR AS A WHOLE WITHOUT THE WRITTEN PERMISSION OF KALAMAZOO IS PROHIBITED.

SCALE: 1:5 WEIGHT: _____ SHEET 1 OF 1