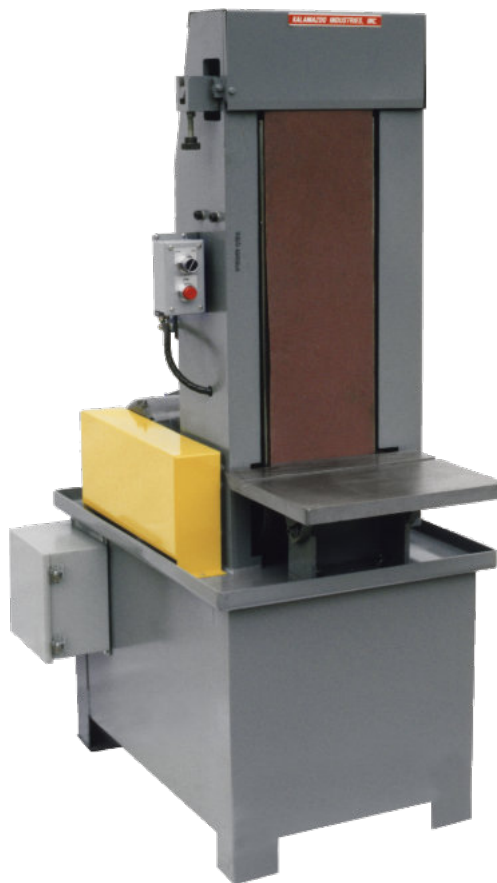


KALAMAZOO

INDUSTRIES INC.

INSTRUCTION MANUAL

S10D 10" x 90" Dry Belt Sander



MADE IN USA

WARRANTY

All products are guaranteed for a period of one year to the original purchaser, against defects in material work workmanship, under normal use

Electric motors are warranted by the manufacturer and will be repaired by the nearest repair station or replaced. Defective motors are not be returned to Kalamazoo Industries. Please call for instructions (269) 382-2050. Written authorization must be obtained before returning merchandise.

RETURN POLICY

- Authorization must be obtained before returning merchandise. Please call our Customer Service Department to receive a return authorization number (269) 382-2050.
- Please include with your return a copy of your invoice or packing slip.
- All returns will be subject to a 10% restocking fee.
- Customer is responsible for paying for return freight.
- No returns will be accepted after one year of invoice date.

BELT SANDER SAFETY

- READ THE OPERATING INSTRUCTIONS BEFORE RUNNING MACHINE.
- ALWAYS WEAR SAFETY GLASSES OR A FULL FACE SHIELD FOR PROTECTION.
- KEEP HANDS CLEAR OF THE SANDING AREA.
- NEVER WEAR GLOVES OR LOOSE FITTING CLOTHES WHEN OPERATING THIS MACHINE.
- ALWAYS KEEP HAIR TIED BACK AND COVERED.
- LET MACHINE ROTATION COME TO A FULL STOP BEFORE CHANGING BELT.
- KEEP SAFETY GUARDS IN PLACE. DO NOT ALTER GUARDS OR MACHINE IN ANY WAY. ANY ALTERATIONS TO GUARDS AND MACHINE COULD CAUSE SERIOUS INJURY AND WILL VOID MACHINE WARRANTY.
- ALL BELT SANDERS SHOULD BE OPERATED IN A WELL-VENTILATED AREA. THE DUST CREATED WHEN SOME MATERIALS ARE SANDED CAN BE HARMFUL. DUST MASKS/RESPIRATORS ARE RECOMMENDED AS A PRACTICAL MEANS OF MINIMIZING DUST INHALATION. FUMES FROM OTHER SOURCES CAN ALSO CAUSE FIRES WHEN IN CONTACT WITH SANDING SPARKS.
- NEVER MIX MATERIALS.
- SPARKS CREATED BY SANDING SHOULD BE DIRECTED DOWNWARD AND AWAY FROM THE FACE AND BODY. DO NOT GRIND NEAR FLAMMABLE MATERIALS.
- ELECTRICAL SANDING MACHINES ARE NOT INTENDED FOR USE IN OR NEAR WATER. THIS INCLUDES AN OPERATOR STANDING ON A WET FLOOR OR WORKING AROUND CONTAINERS OF WATER OR OTHER CONDUCTIVE LIQUIDS.

KALAMAZOO INDUSTRIES, INC.

6856 E K AVENUE

KALAMAZOO, MI 49048

PHONE: (269) 382-2050

FAX: (269) 382-0790

WWW.KALAMAZOOIND.COM



OPERATING INSTRUCTIONS

Belt tension: You control the belt tension with air pressure. The standard air pressure required is 50-55 PSI. Connect shop air to air regulator. Set regulator gauge between 50-55 PSI for best performance. Too much air pressure will stretch the sanding belt; too little air pressure will result in poor tracking. Use the control valve to apply tension or release the tension of the sanding belt.

Belt tracking: The tracking control knob **(43)** is used to center the sanding belt on the steel platen **(30)**. Keep the belt centered on the platen at all times. After changing the belt, re-check the tracking to ensure the sanding belt stays centered on the platten. Use the 'jog' mode on the switch to check the belt tracking before operating the machine.

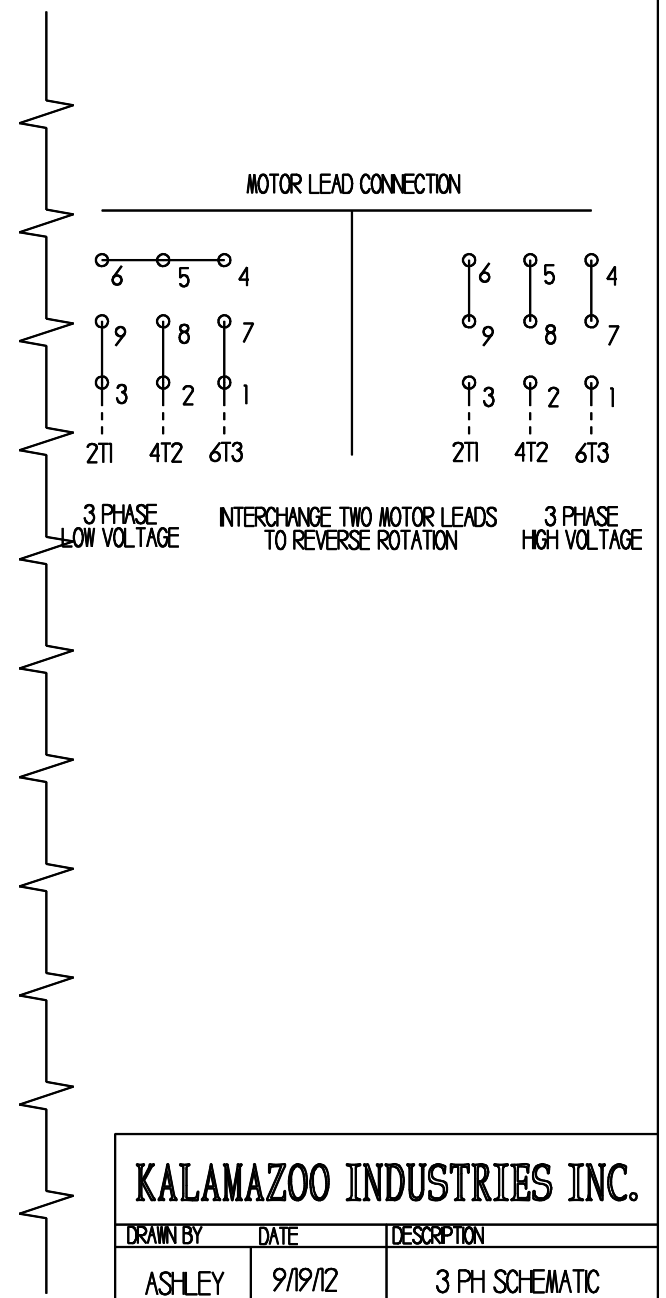
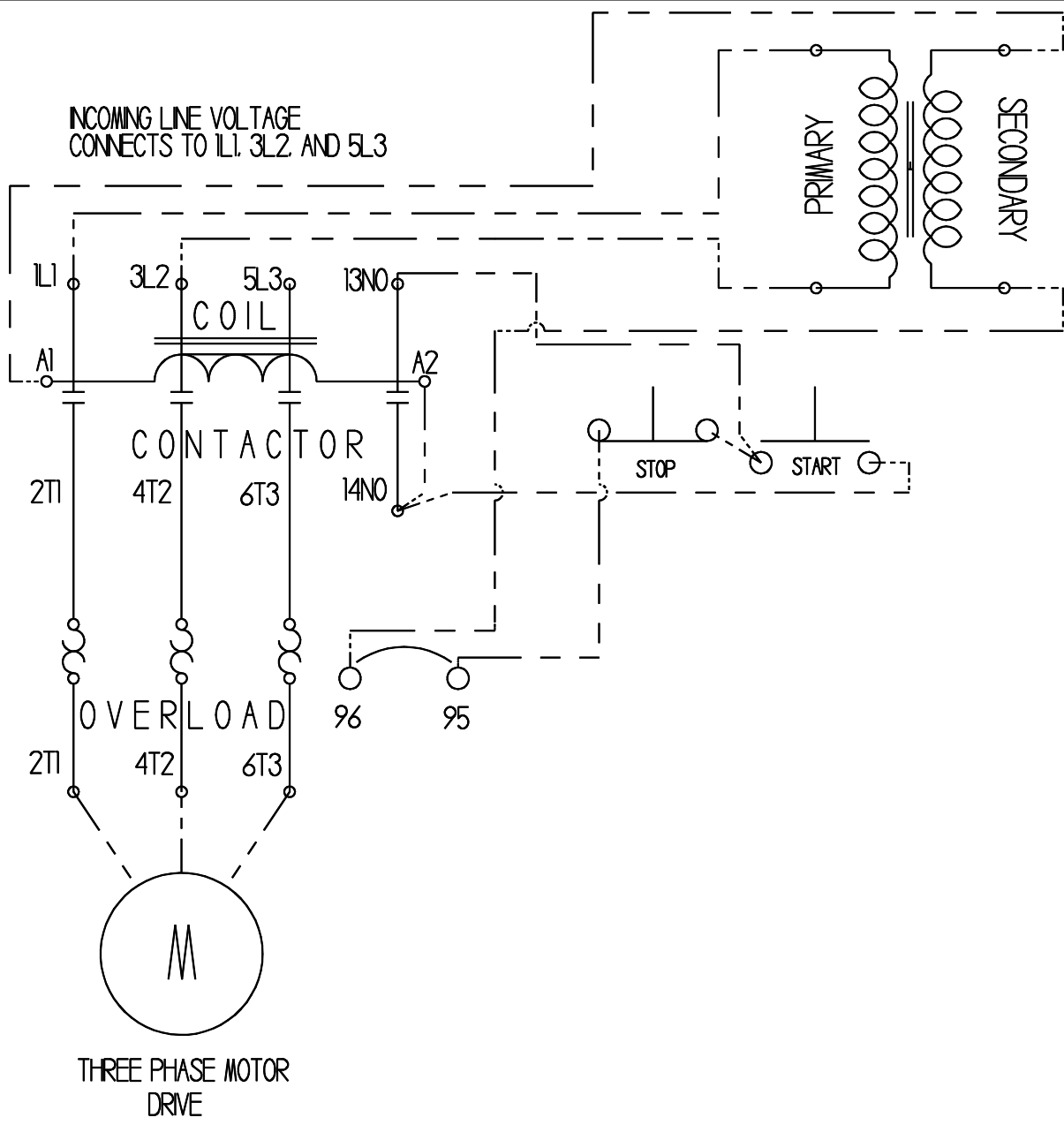
Belt changing: Turn the electrical power switch "OFF." Use the control valve to release the sanding belt. Open the belt guard door and remove the belt by sliding it off the pulleys. Replace the belt and close the guard door; re-tension the belt with the air control valve. Use the "jog" mode on the switch to check for correct belt tracking. Return the switch to "RUN" mode to operate the machine.

Lubrication: The most crucial lubrication point is on the bearings **(10)** on the drive pulley. Grease both bearings every 30 days more often when the sander is continuously used. Grease the motor and yoke post as needed.

Work table: The work table **(49)** tilts for angle sanding. To tilt the work table loosen the cap screws on either side of the support table **(44)**. Adjust the work table to the desired angle and re-tighten the cap screws to secure the table. Loosen cap screws under the work table to adjust front to back table location. **Necessary: Always keep the work table within 1/8" of the sanding belt.**

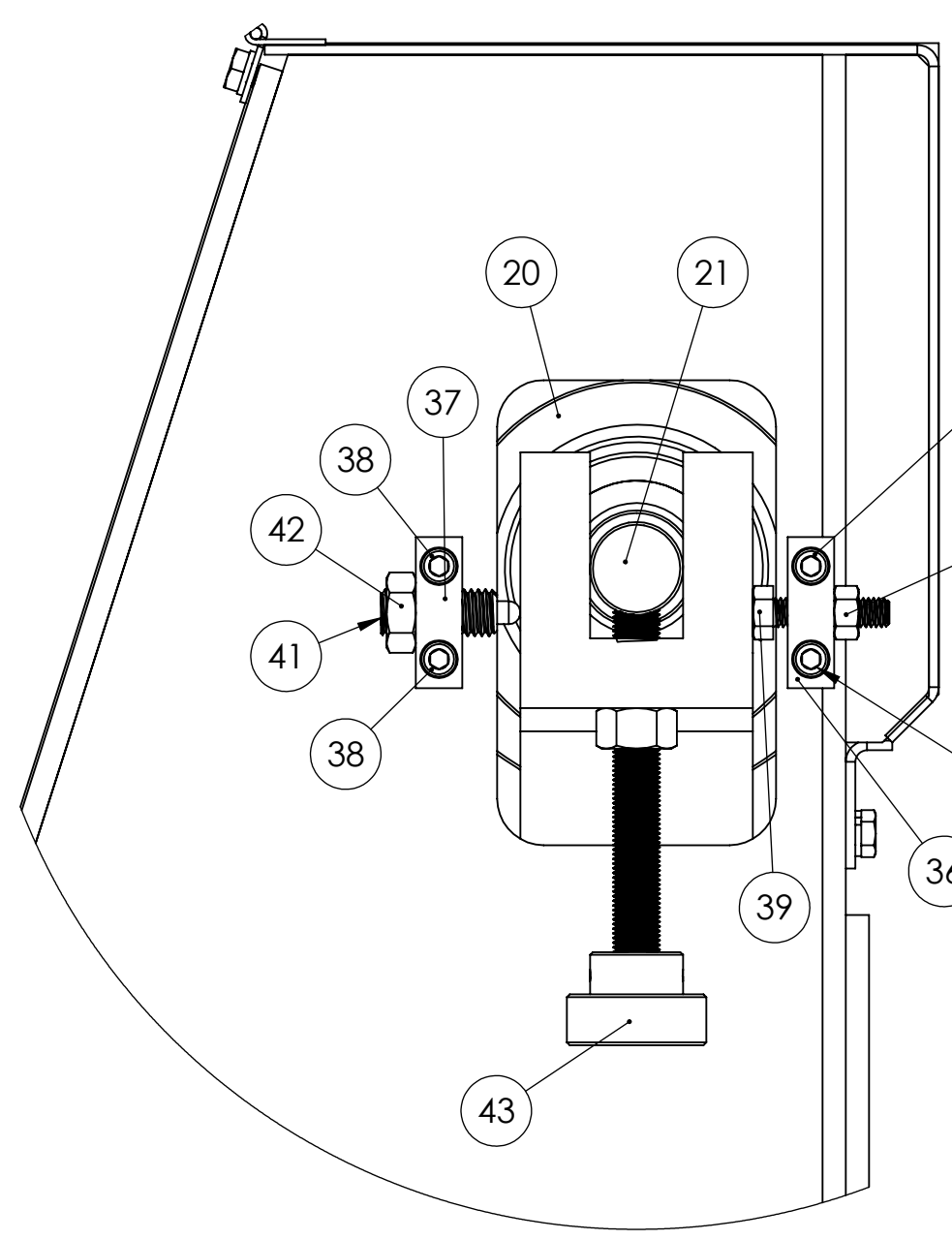
MAINTENANCE

- Clean the machine frequently, primarily if you won't be operating the machine for long periods.
- Keep the drive belts **(35)** tight. When you squeeze the belts, there should be a 1/2" of slack in the v-belts.
- Oil the top of the work table to minimize rust.
- Release air tension on the sanding belt when not using the machine.

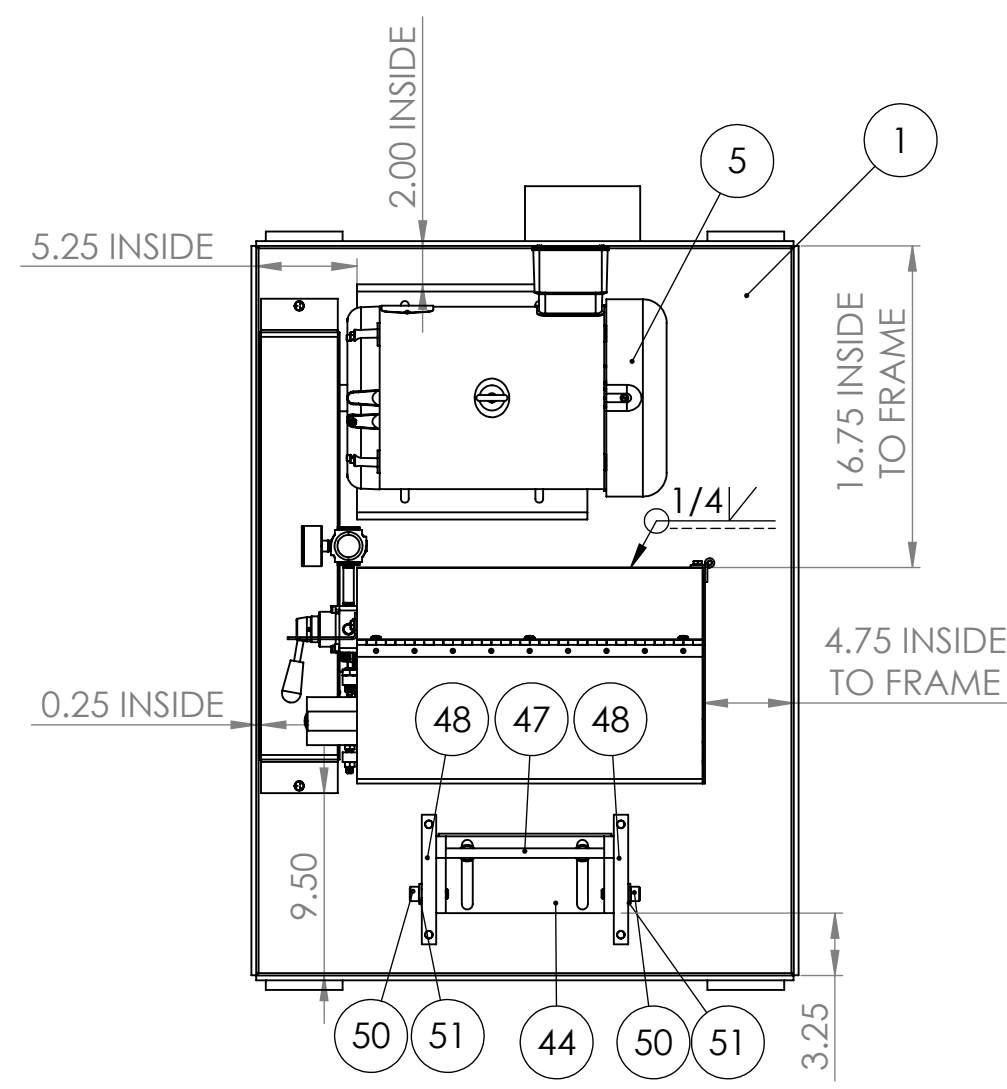


KALAMAZOO INDUSTRIES INC.		
DRAWN BY	DATE	DESCRIPTION
ASHLEY	9/19/12	3 PH SCHEMATIC
REVISED BY	DATE	PART #
MATERIAL		

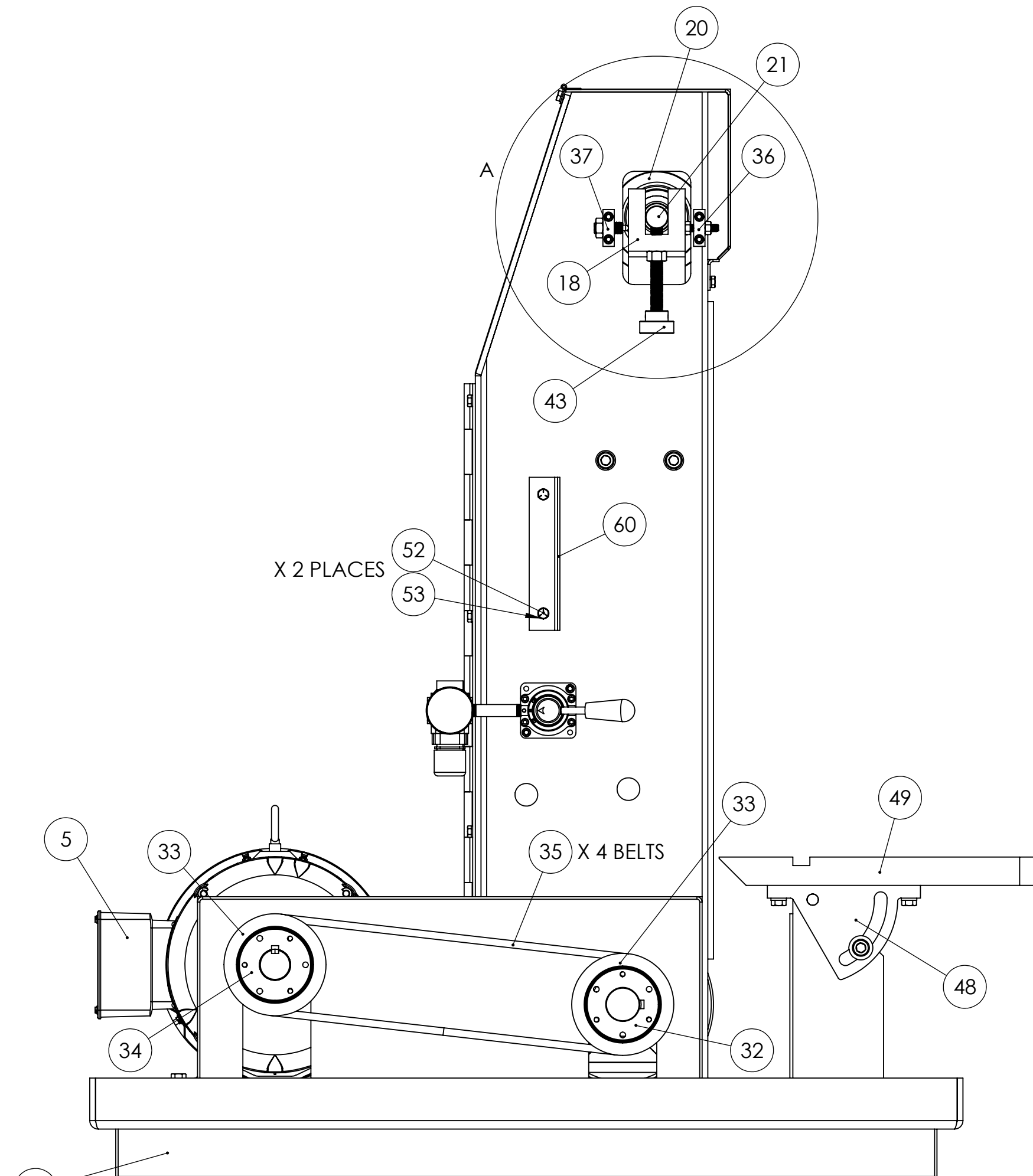
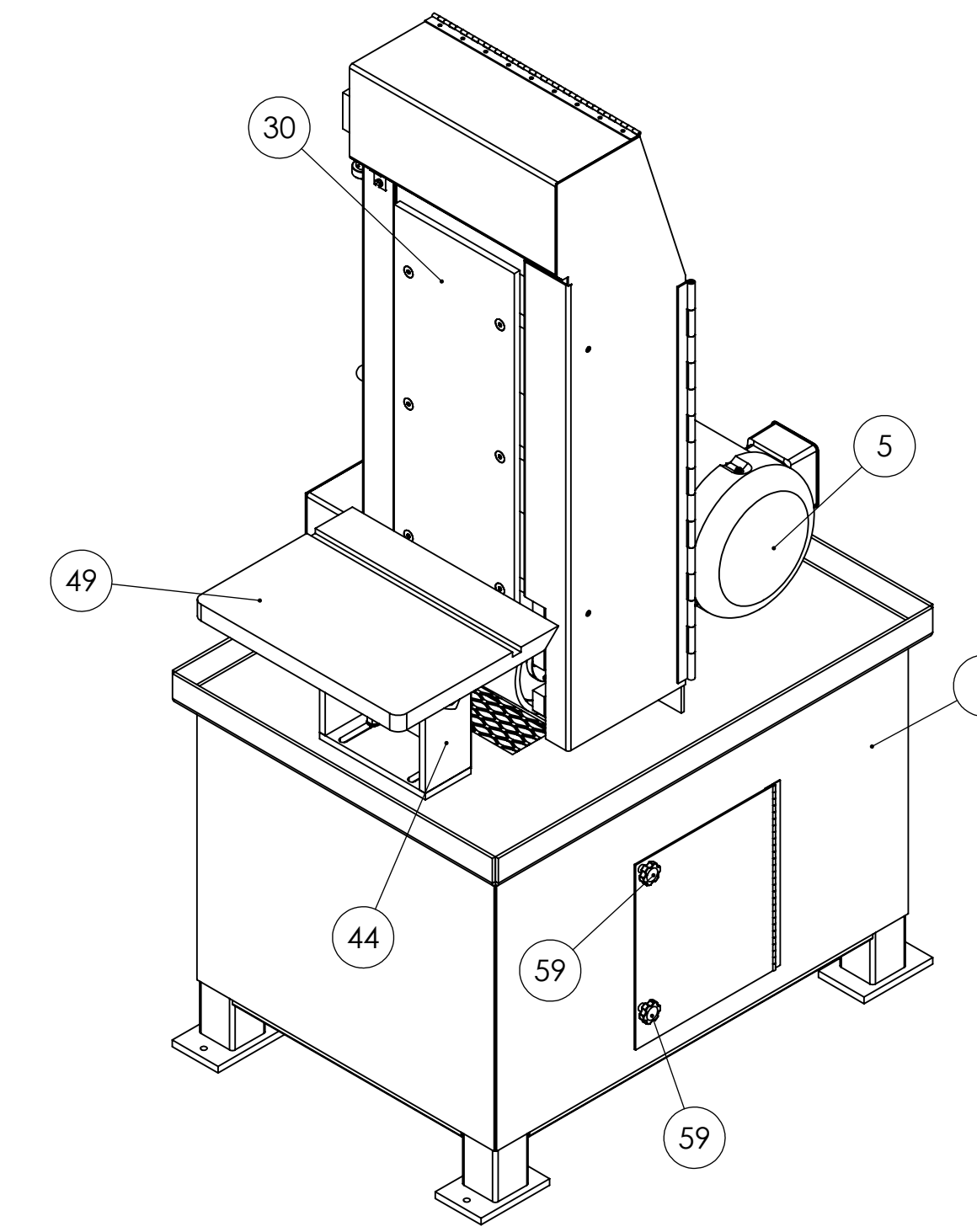
Y
X



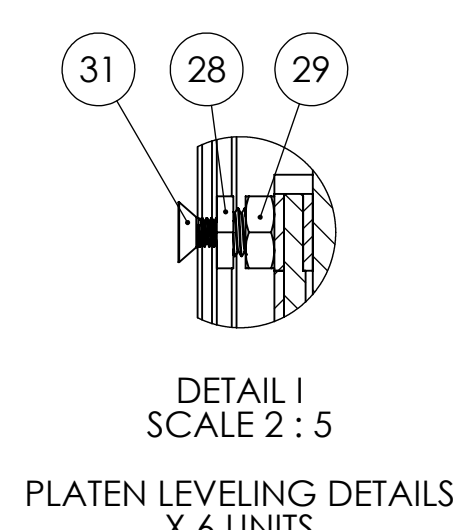
DETAIL A
TRACKING DETAILS
SCALE 1:2



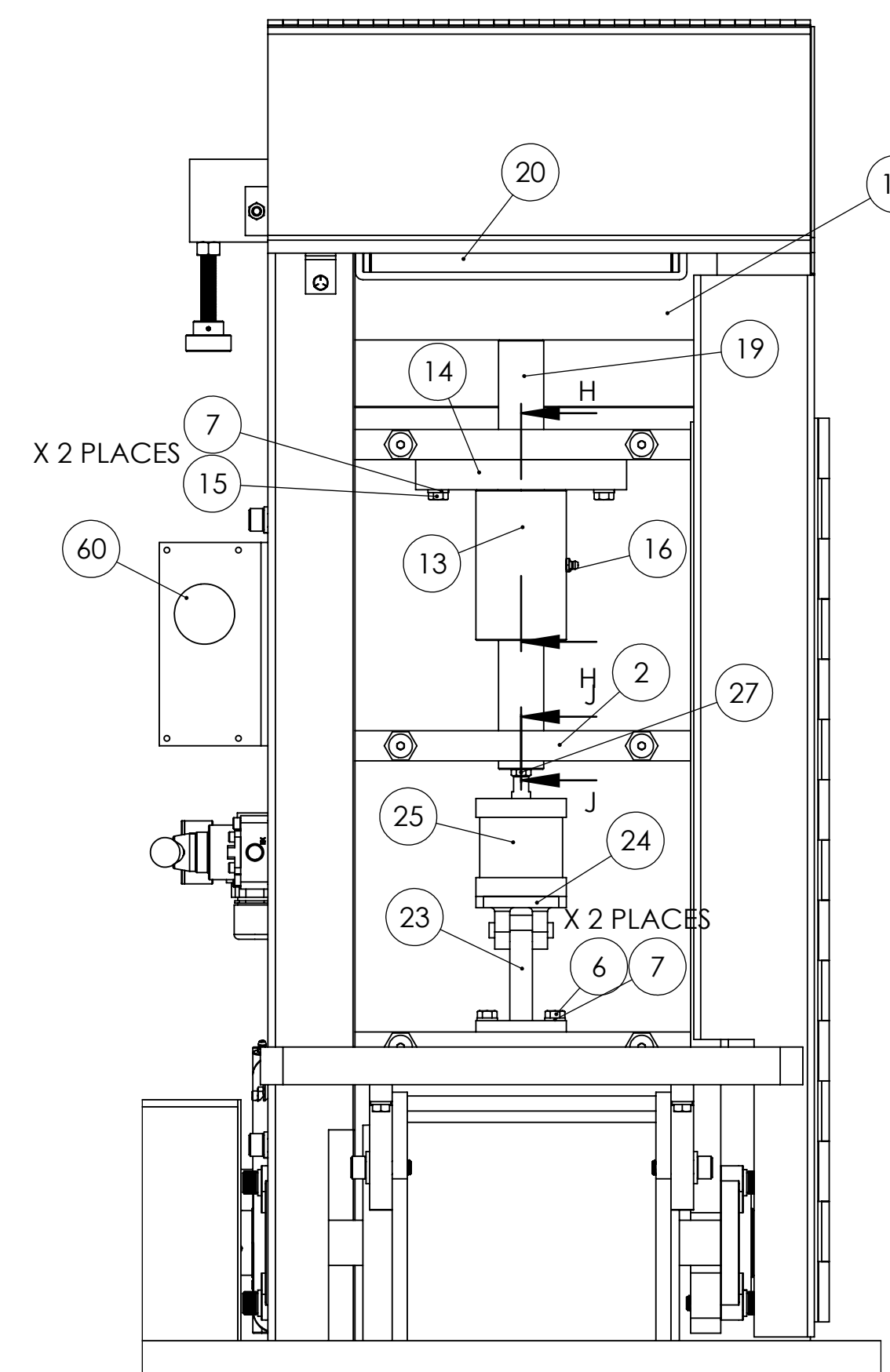
FLOOR PAN, MAIN FRAME
AND MOTOR MOUNT WELDING
LAYOUT



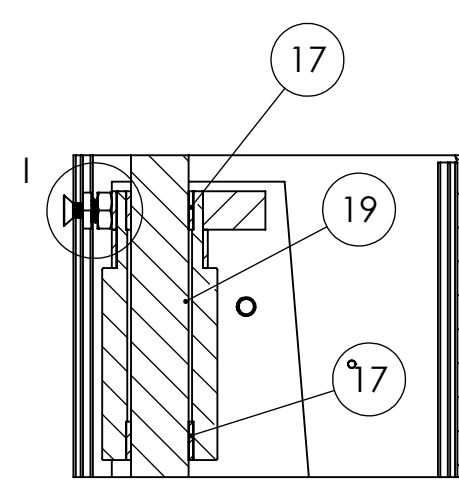
INTERIOR VIEW OF
BELTS AND PULLEYS



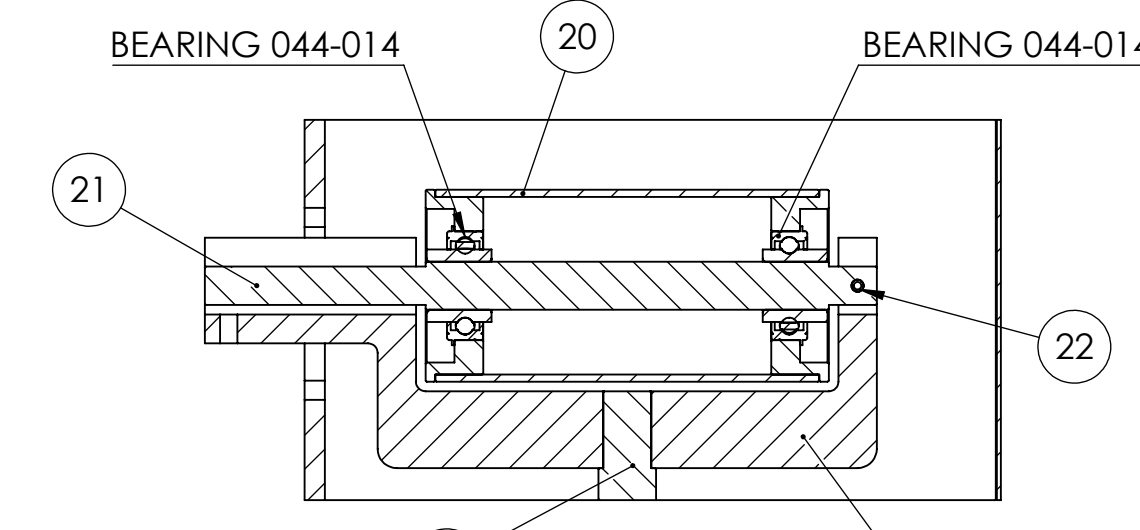
DETAIL I
SCALE 2:5
PLATEN LEVELING DETAILS
X 6 UNITS



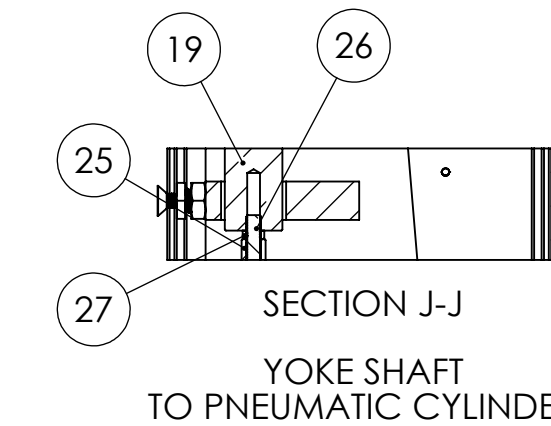
INTERIOR FRONT VIEW
OF MAIN FRAME



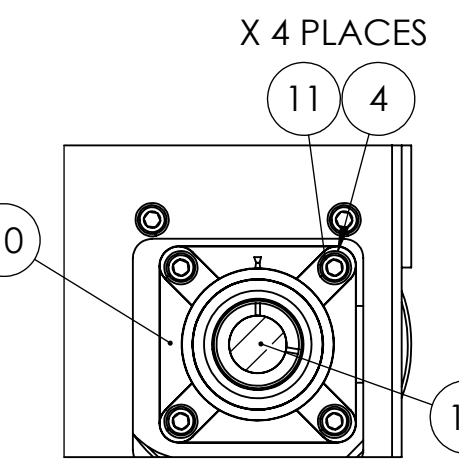
SECTION H-H
INTERNAL OF
YOKE SHAFT SLEEVE



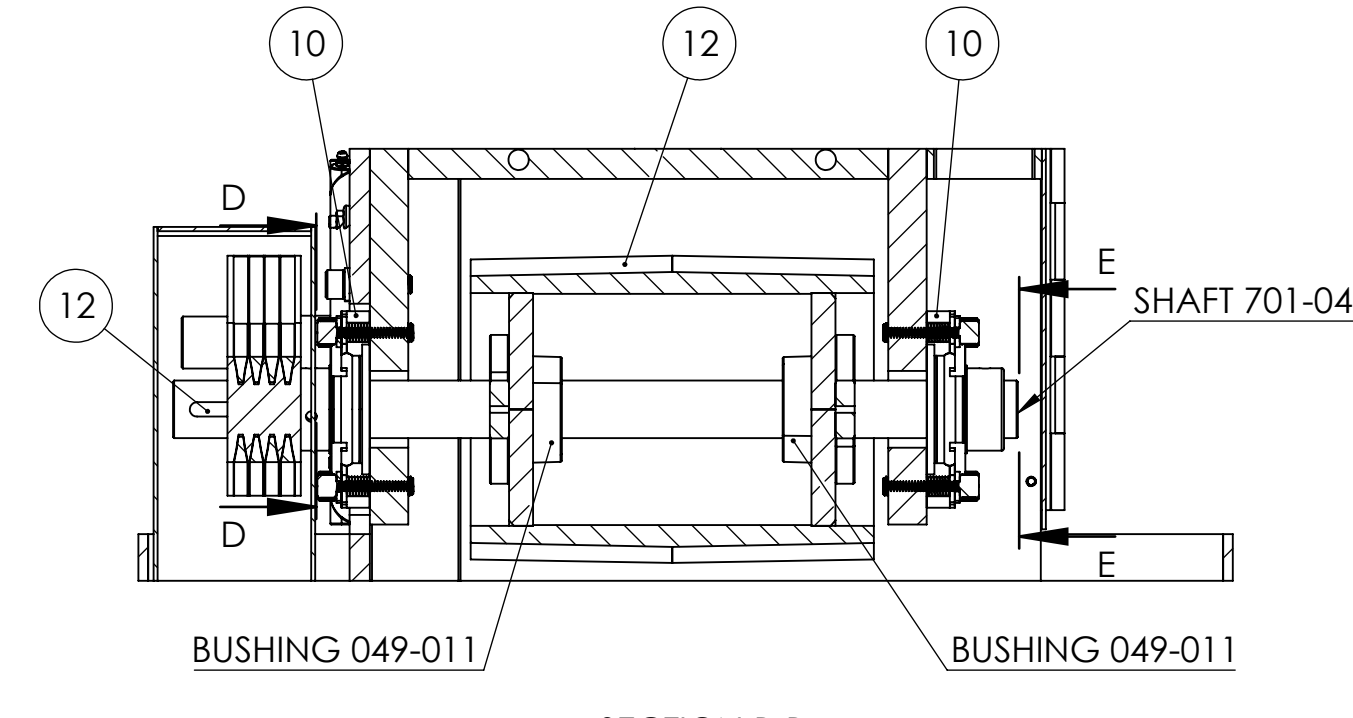
SECTION C-C
IDLER PULLEY DETAILS



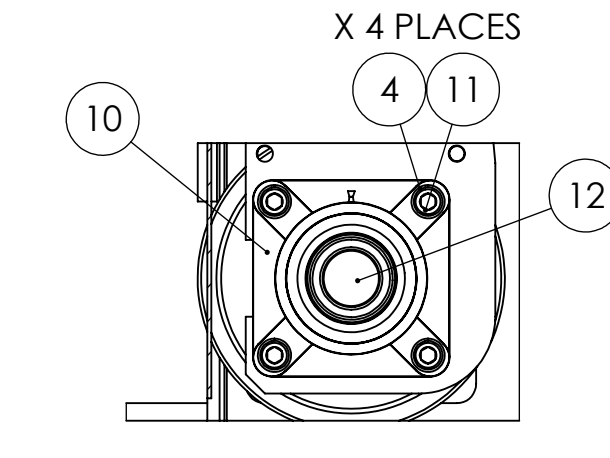
SECTION J-J
YOKE SHAFT
TO PNEUMATIC CYLINDER



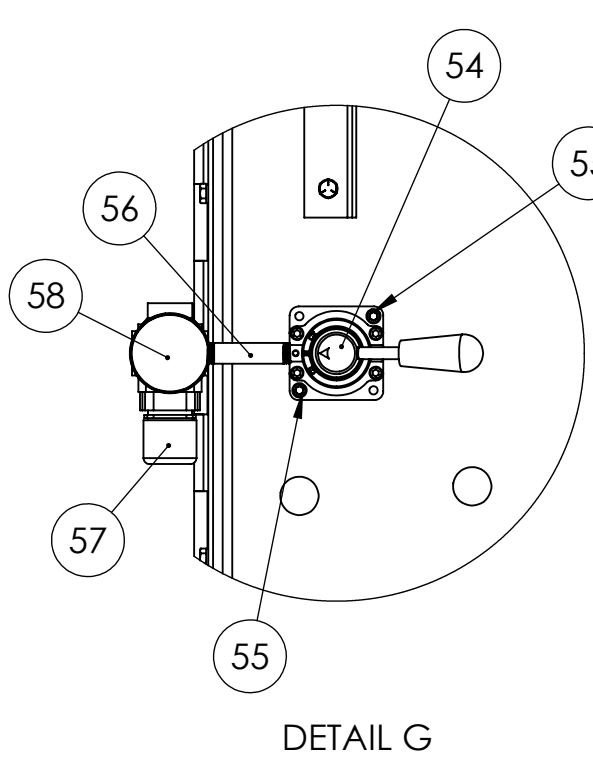
SECTION D-D
ATTACHMENT OF
BEARING



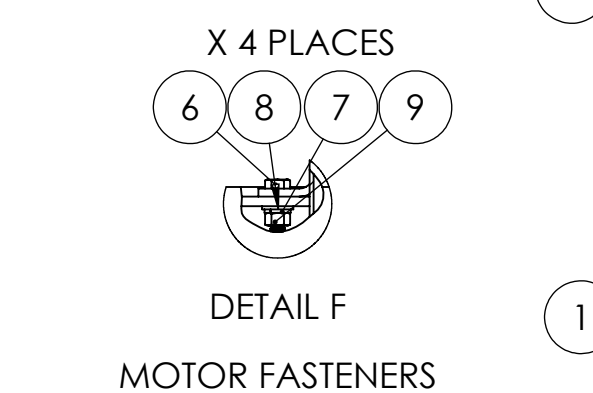
SECTION B-B
DRIVE PULLEY DETAILS



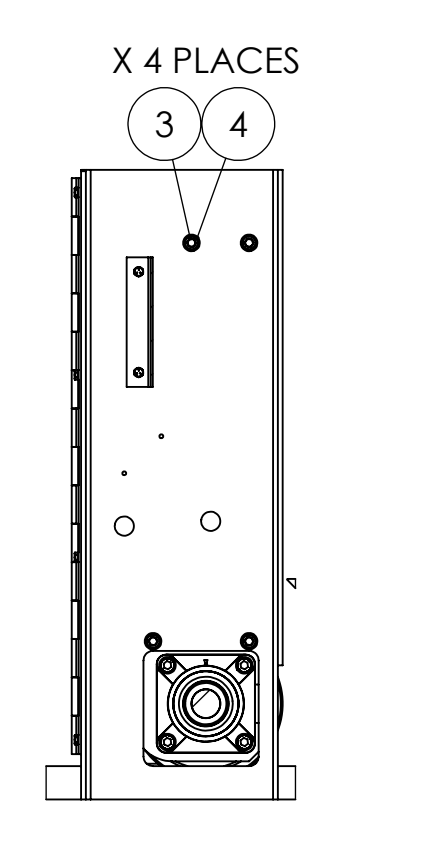
SECTION E-E
ATTACHMENT OF
BEARING



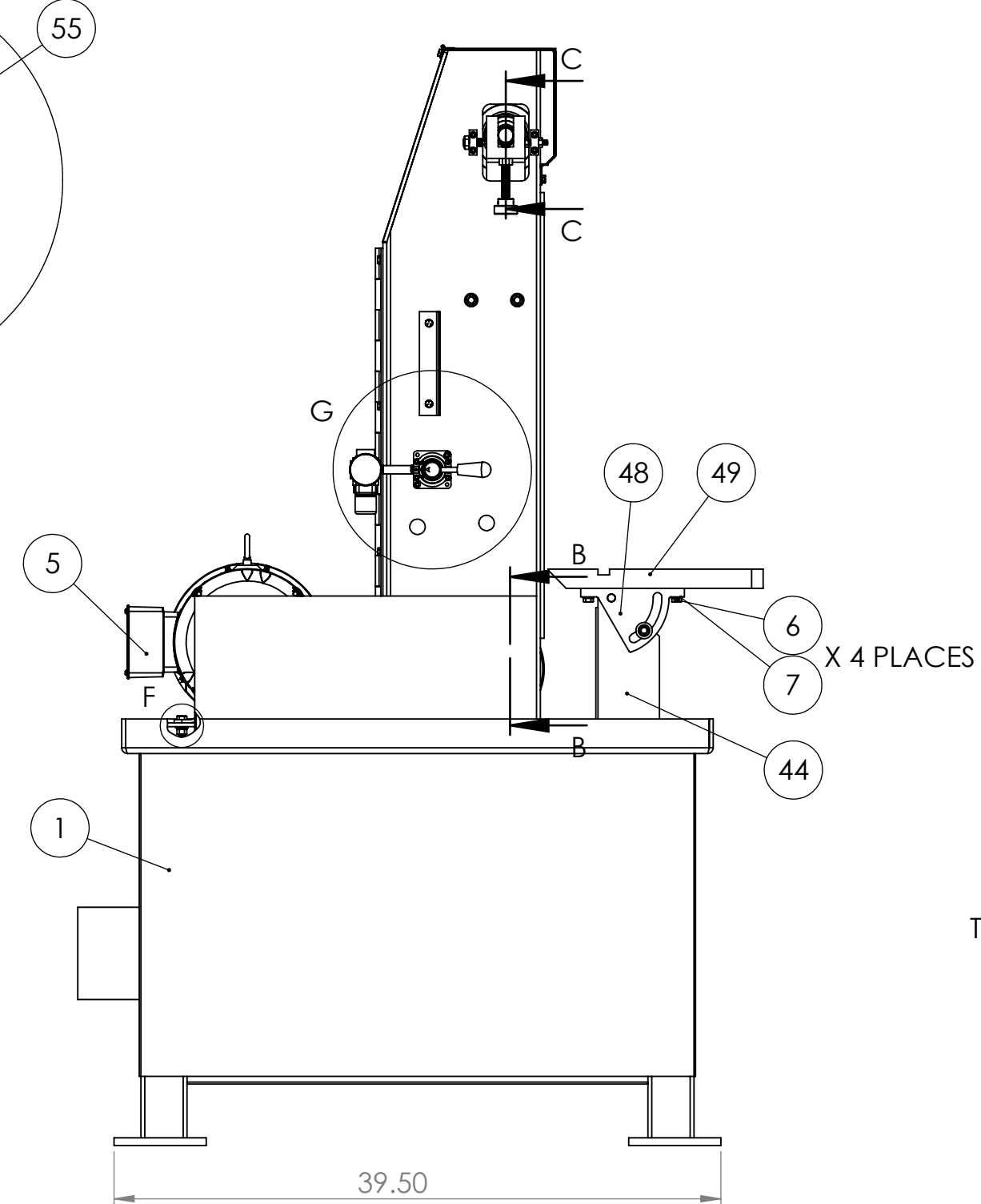
DETAIL G



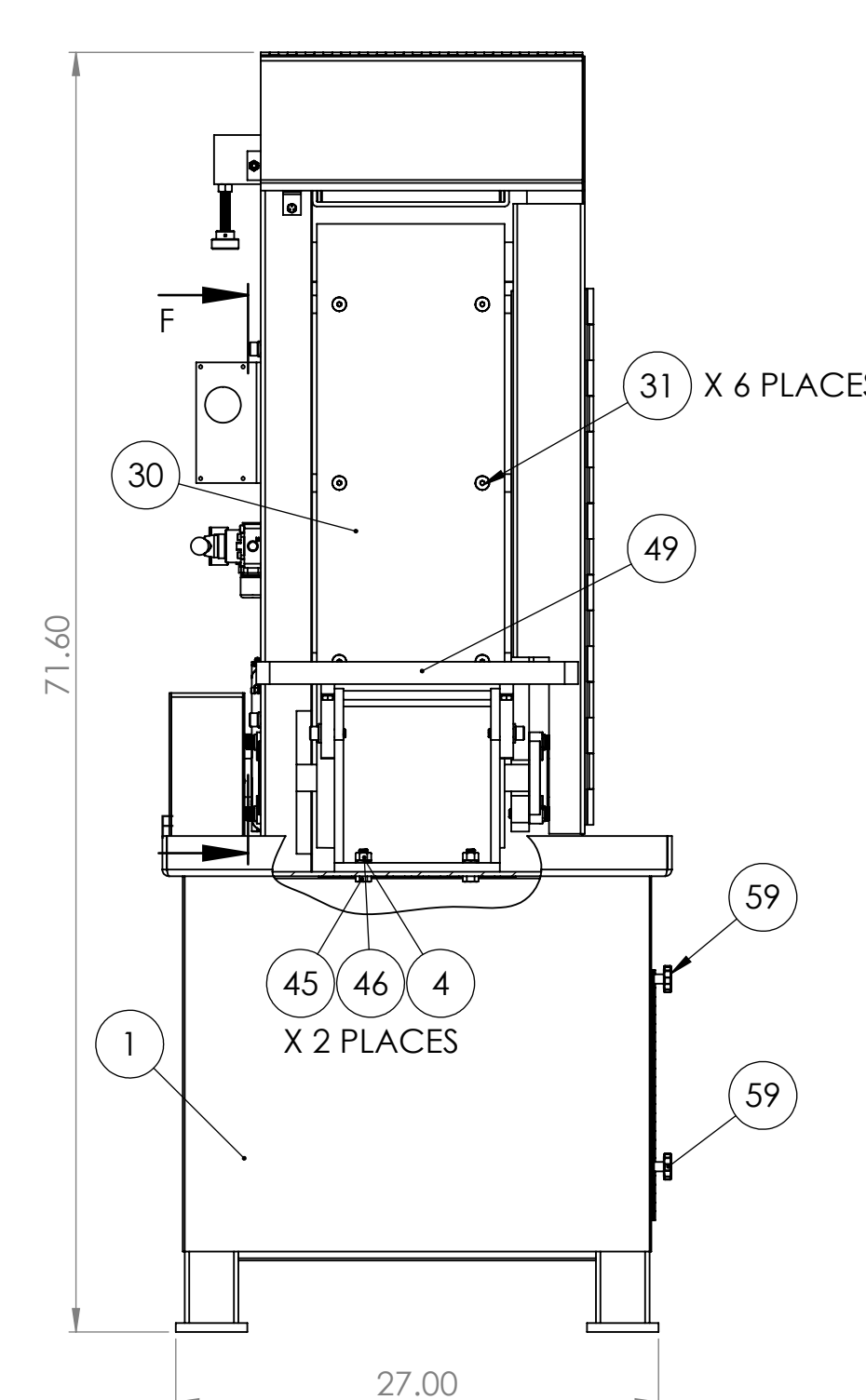
DETAIL F
MOTOR FASTENERS



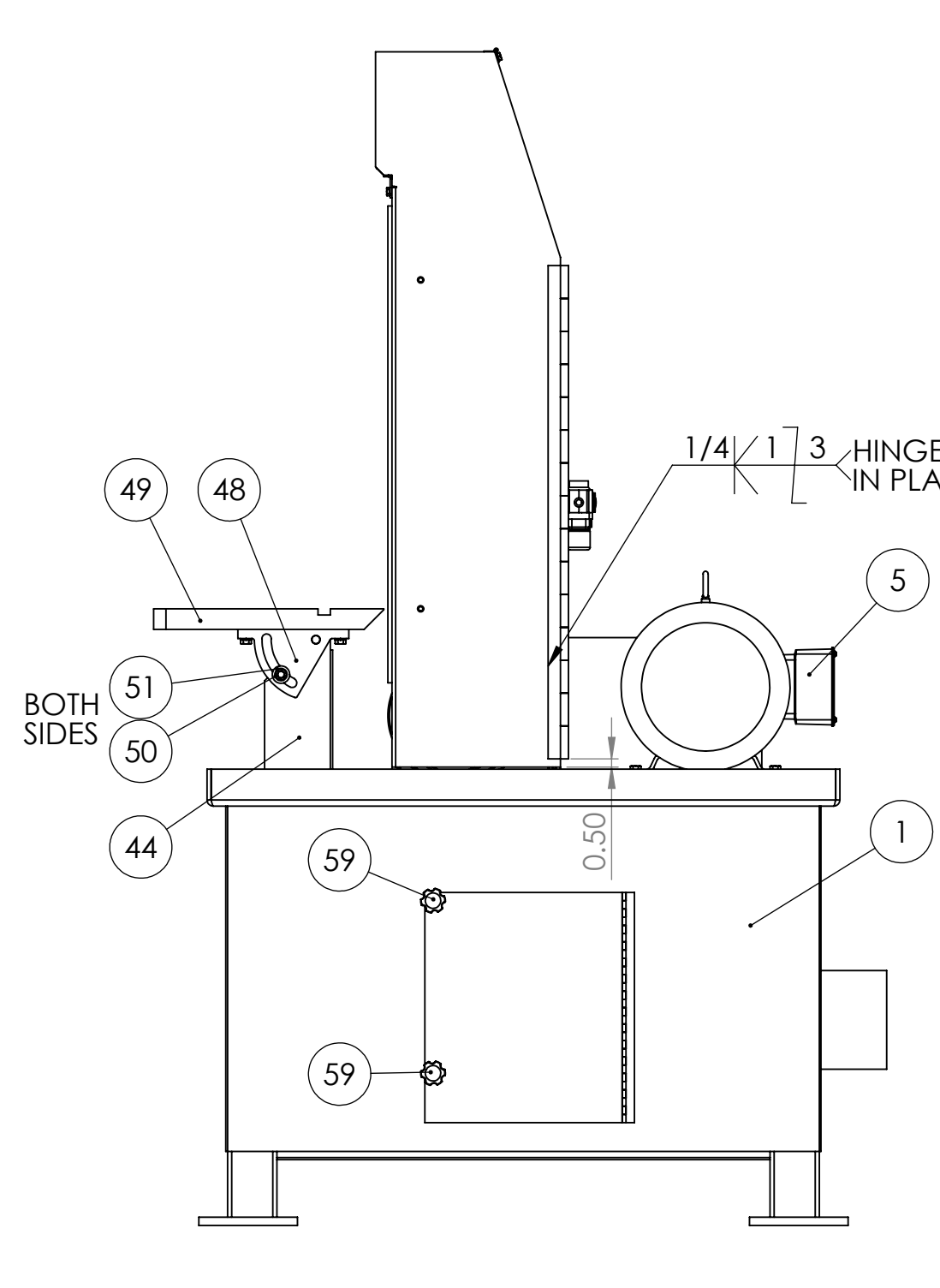
SECTION F-F
SCALE 1:10
ATTACH MAIN FRAME
TO CHANNEL FRAME SUPPORT



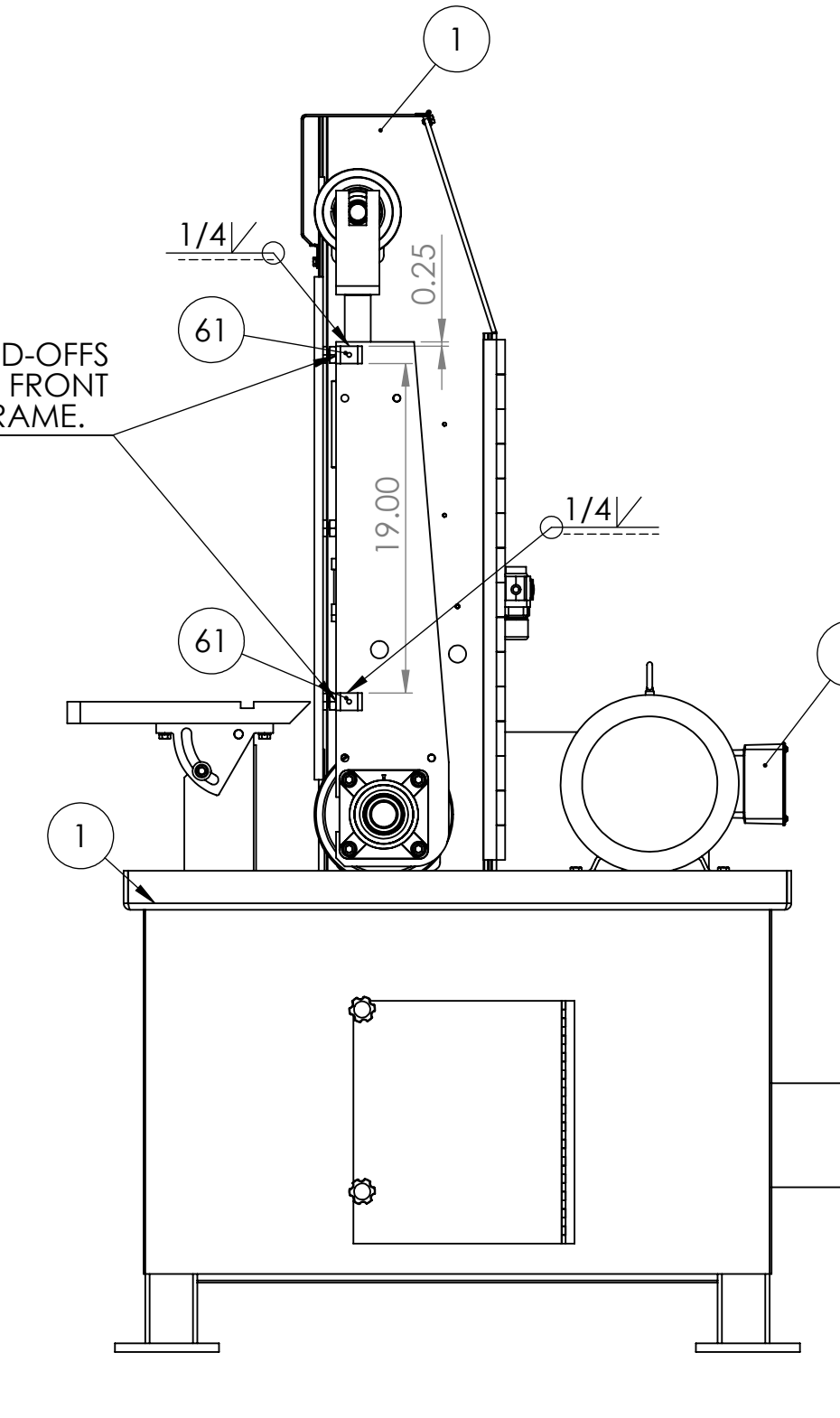
LEFT SIDE VIEW



FRONT VIEW



RIGHT SIDE VIEW



WELDING
FRAME STAND-OFFS

ITEM NO.	PART NUMBER	DESCRIPTION	QTY.
1	716-005	STAND, FOR S10D SANDER	1
2	291-032	MAIN FRAME FOR S10D SANDER	1
3	SHCA050028	1/2-13 X 1-3/4 SHCS	4
4	SLW2050	1/2 SPLIT L/W Z	14
5	486-040	10HP MOTOR FOR S10 SANDERS	1
6	HHC5037020	3/8-16 X 1-1/4 HHC5 GR5 Z	10
7	SLW2037	3/8 SPLIT L/W Z	12
8	UFW2037	3/8 USS F/W Z	4
9	FHN5037	3/8-16 FHN GR5 Z	4
10	044-013	4 BOLT FLANGE BRG 1-1/2 IN FOR S10, S14 DRIVE PULLEY	2
11	SHCA050032	1/2-13 X 2 SHCS	8
12	560-055	DRIVE PULLEY ASSEMBLY FOR S10 SANDERS	1
13	714-005	SLEEVE, YOKE SHAFT FOR S10, S14	1
14	556-047	PLATE, SLEEVE BUSHING FOR S10 AND S14	1
15	HHC5037032	3/8-16 X 2 HHC5 GR5 Z	2
16	ZERK012000	1/8-27 X 1 1/16 STRT LUBE FITTING	1
17	RLB AA-1704-15	AA-1704-15 BRONZE BUSHING 1-1/2 X 1-3/4 X 1	2
18	960-018	YOKE FOR S10 SANDERS	1
19	700-031	SHAFT, YOKE FOR S10 SANDERS	1
20	560-054	IDLER PULLEY W BEARINGS FOR S10 SANDERS	1
21	701-042	SPINDLE, IDLER FOR S10D SANDERS	1
22	ROLA031040	5/16 X 2 1/2 ROLL PIN	1
23	041-119	T-BRACKET, FOR CYLINDER PIVOT ON S10D	1
24	151-003	CLEVIS, AIR CYLINDER FOR S10 SANDER	1
25	131-010	CYLINDER FOR S8, S10 SANDERS	1
26	709-010A	3/8-24 X 1-1/4 STUD FOR S8D SANDERS	1
27	FJNZ038	3/8-24 F H JAM NUT	1
28	696-018	SCREW, LEVELING FOR S14 SANDERS	6
29	FJNZ062	5/8-11 F H JAM NUT Z	6
30	563-025	PLATEN FOR S10D SANDERS	1
31	FSCA037016	3/8-16 X 1 FSHCS	6
32	049-069	MOTOR AND SPINDLE PULLEY BUSHING FOR S10 AND S14 SANDERS	1
33	560-058	SPINDLE PULLEY SHEAVE FOR K20SF-20HP AND KM20-22/20HP, MOTOR AND SPINDLE PULLEY SHEAVE FOR S10 AND S14 SANDERS	2
34	049-003	MOTOR PULLEY BUSHING FOR K16-18, KM16-18, K20SF-15, K20RS-15, K20SW-15, KM20-22-15HP, KM20-22W-15 FOR K16-18, KM16-18, K20SF-15, K20RS-15, K20SW-15, KM20-22-15HP, KM20-22W-15	1
35	051-010	V-BELT FOR S10D AND S10W	4
36	053-009	TRACKING BLOCK- 5/16 THREADED HOLE	1
37	053-009B	TRACKING BLOCK 1/2-13 THREADED HOLE	1
38	SHCA025016	1/4-20 X 1 SHCS	4
39	HHC5031020	5/16-18 X 1-1/4 HHC5 GR 5 Z	1
40	FHN5031	5/16-18 FHN GR5 ZINC	1
41	SPPA050020	1/2-13 X 1-1/4 SPRING PLUNGER W BROWN DELRIN NOSE ALLOY	1
42	FJNZ050	1/2-13 F H JAM NUT Z	1
43	441-016ASSY	TRACKING KNOB ASSEMBLY FOR S8 AND S10 SANDERS	1
44	711-013	SUPPORT, TABLE S10 AND S14 SANDERS	1
45	HHC5050024	1/2-13 X 1-1/2 HEX HEAD CAP SCREW	2
46	FHN5050	1/2-13 FHN GR5 Z	2
47	RND-0.5CF1018X10.75	10-3/4 INCHES OF 1/2 RND RNS C1018	1
48	831-014	TRUNNION, TABLE FOR S14 SANDERS	2
49	829-023	TABLE, WORK FOR S10 AND S14 SANDERS	1
50	SHCA050024	1/2-13 X 1-1/2 SHCS	2
51	UFW2050	1/2 USS F/W Z	2
52	HHC5025008	1/4-20 X 1/2 HHC5 GR5 Z	2
53	SLW2025	1/4 SPLIT L/W Z	2
54	912-014	3P ROTARY HAND VALVE	1
55	SHCA025024	1/4-20 X 1-1/2 SHCS	2
56	02530040BLN	02530040BLN 1/4 X 3 BLACK PIPE NIPPLE	1
57	R72G2AKRMM	R72G2AKRMM 1/4" REGULATOR	1
58	18-013-212	18-013-212 1.5- 1/8 CBM-O-160	1
59	441-015	907B-2500-1.00S 1/4 THUMBSCREW 1-1/2 DIA	2
60	041-112	SWITCH BRACKET FOR E2PB BUTTON ENCLOSURE	1
61	S10-S14FRAMESTANDOFF	FRAME STAND-OFF FOR S10 AND S14 SANDERS	2

DRIVE PULLEY 560-055 INCLUDES:

- (1) SHAFT 701-043
- (2) BUSHING 049-011

IDLER PULLEY 560-054 INCLUDES:

- (2) BEARING 044-014

PROPRIETARY/CONFIDENTIAL
THE INFORMATION CONTAINED IN THIS DRAWING IS THE SOLE PROPERTY OF KALAMAZOR. IT IS TO BE USED ONLY FOR THE PROJECT AND UNDER THE SUPERVISION OF THE PROJECT ENGINEER. ANY REPRODUCTION IN PART OR AS A WHOLE WITHOUT THE WRITTEN PERMISSION OF KALAMAZOR IS PROHIBITED.

UNLESS OTHERWISE SPECIFIED:	NAME	DATE
DRAWINGS ARE IN INCHES	DESIGNED BY	
FRACTIONAL ANGULAR DIMENSIONS	CHECKED	
DECIMAL ANGULAR DIMENSIONS	ENG APPR	
THREE PLACE DECIMAL DIMENSIONS	WFO APPR	
INTERFERE GEOMETRIC TOLERANCES PER ASME Y14.5	D.A.	
COMMENTS:		
NEET ASST	USED ON	FINISH
APPLICATION	DO NOT SCALE DRAWING	

TITLE: 10" DRY VERTICAL SANDER
 SIZE: DWG. NO. E S10D
 SCALE: 1:5 WEIGHT: SHEET 1 OF 1