



# Kalamazoo Industries Inc.

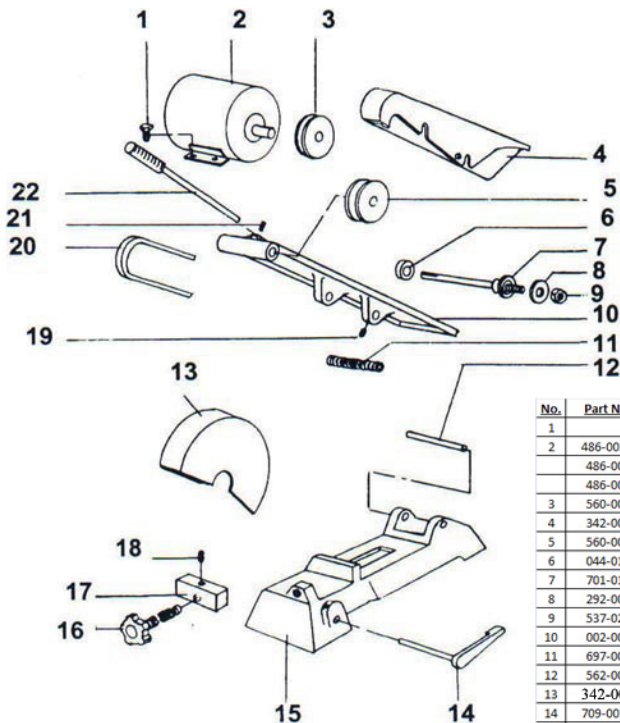
6856 East K Avenue

Kalamazoo, MI 49048-6042

Phone: (269) 382-2050 • Fax (269) 382-0790

www.kalamazooindustries.com

## MODEL K7B & K8B ABRASIVE SAW



No.	Part No.	Description	QTY
1		H.H.C.S	4
2	486-002A	1Hp 1Ph Motor - K7B	1
	486-006	3Hp 1Ph Motor - K8B	1
	486-007	3Hp 3Ph Motor - K8B	1
3	560-004	5/8" Motor Pulley	1
4	342-002	Belt Guard	1
5	560-003	1/2" Spindle Pulley	1
6	044-012	Bearings	2
7	701-012	Spindle with Tight Flange	1
8	292-002	Loose Flange	1
9	537-024	Spindle Nut	1
10	002-001	Saw Arm	1
11	697-005	Trunnion Spring	1
12	562-004	Trunnion Pin	1
13	342-001	Wheel Guard	1
14	709-001A	Stop Assembly	1
15	050-001	Saw Base	1
16	696-002	Screw Vise Assembly	1
17	431-003	Vise Block	1
18		1/4-20 S.S.S	1
19		1/4-20 S.S.S	1
20	051-001	V-Belt	1
22	381-003	Saw Handle With Grip	1
		Spindle Assembly (Includes Spindle, Tight Flange, Loose Flange, Bearings and Nut) -	
	702-001	Optional	1
	347-001	Grip Only	1
	002-001AS	Arm Assembly (Arm, Spindle Assembly)	1

### Basic Operation:

1. Be sure work piece is held securely. Any part movement will break abrasive blades.
2. Abrasive wheel grades vary. Use Kalamazoo Ind. non-reinforced 7" or 8" abrasive wheels. 7" # KAB7N or 8" KAB8N, 1/2" arbor. Heavy reinforced wheels in this diameter do not cut. Good cuts are bright, not burned or discolored.
3. Keep V belts tight (1/2" squeeze) and pulleys lined up straight. Use a v belt tensioner to tension belts.
4. DO NOT USE STEEL TOOTHED BLADES!! GUARDING IS FOR ABRASIVE ONLY!!