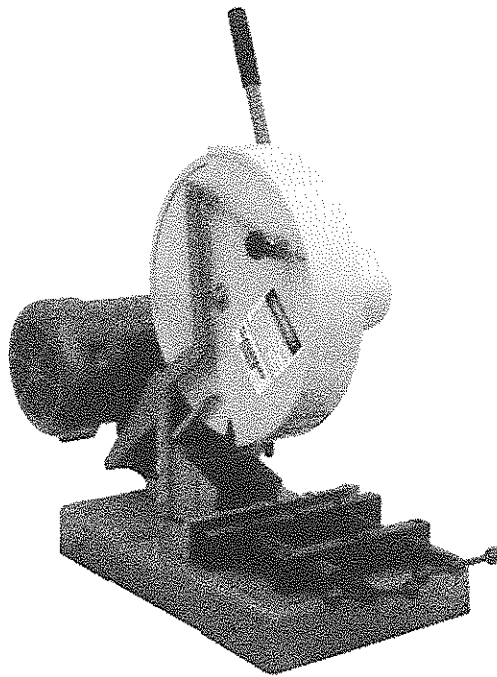


# INSTRUCTION MANUAL

HS14



**KALAMAZOO  
INDUSTRIES, INC.**

6856 East K Avenue  
Kalamazoo, MI 49048

269-382-2050 PH

269-382-0790 FAX

[www.kalamazooindustries.com](http://www.kalamazooindustries.com)

#### **ABRASIVE SAW SAFETY**

- NEVER REMOVE SAFETY GUARDS FROM MACHINE.
- DISCONNECT POWER SOURCE BEFORE MAKING ANY MACHINE ADJUSTMENTS
- ELECTRIC MACHINES ARE NOT INTENDED FOR USE IN OR NEAR WATER. THIS INCLUDES AN OPERATOR STANDING ON A WET FLOOR.
- DO NOT USE AROUND FLAMMABLE MATERIALS OR LIQUIDS.
- MACHINES SHOULD BE OPERATED IN VENTILATED AREAS.
- ALWAYS WEAR SAFETY GLASSES OR A FULL FACE SHIELD FOR PROTECTION.
- KEEP HANDS CLEAR OF THE CUTTING AREA.
- DO NOT WEAR GLOVES OR LOOSE FITTING CLOTHES WHEN OPERATING THIS MACHINE.
- ALWAYS KEEP HAIR TIED BACK OR COVERED.
- ALWAYS KEEP FLANGES CLEAN AND TIGHT AGAINST CUTTING WHEEL.
- ABRASIVE MACHINES ARE FOR ABRASIVE WHEELS NOT STEEL TOOTHED BLADES. **DO NOT ATTEMPT TO USE STEEL BLADES UNLESS CORRECTLY GUARDED WITH AN ENCLOSED WHEEL GUARD. KEEP STEEL BLADES FULLY RETRACTED INTO WHEEL GUARD WHEN DONE CUTTING.**
- ALWAYS KEEP WHEEL GUARD IN DOWN POSITION.
- BE SURE WORK PIECE IS CLAMPED SECURELY IN VISE BEFORE CUTTING.

#### **WARRANTY**

- All products are guaranteed for a period of one year to the original purchaser, against defects in material workmanship under normal use.
- Electric motors are warranted by the motor manufacturer and will be repaired by the nearest motor repair station. If non-repairable, they will be replaced by Kalamazoo Industries. Please call for instructions.

#### **RETURN POLICY**

- Authorization must be obtained before returning merchandise. Please call our customer service department for a return authorization number at 269-382-2050.
- Please include with your return a copy of your invoice or packing slip.
- Materials must be sent back prepaid. (Unless otherwise indicated).
- All returns will be subject to a 10% restocking charge.
- No returns will be accepted after one year of invoice date.

#### **DO YOU KNOW THAT**

If these goods are damaged in transit, the DELIVERING TRANSPORTATION COMPANY is required by law to make notation of damages on the freight bill.

If in your opinion, there may be concealed damage, they are required to make an inspection after goods are unpacked. Transportation rates are made in proportion to damage.

Therefore, the carrier and NOT the shipper should be charged with any loss or damage. Any claim should be filed with the delivering Transportation Company.

**PLEASE DO NOT RETURN GOODS TO US  
WITHOUT OUR RGA NUMBER AND SHIPPING INSTRUCTIONS**

#### Specifications:

HS14 12" or 14" dia. blade

5 Hp., 3450 TEFC, 3 phase 220/440 volt/60 hz

4400 RPM Spindle speed

1" Spindle arbor, LH thread.

Manual switch, Amps 7.6/220 volt, 15.2/440 volt

#### Operation:

- Be sure of correct voltage & phase when connecting electrical power.
- After connecting power CHECK for correct blade rotation ( CCW). Reverse any Line leads at the switch to reverse rotation.
- CAUTION: HS14 IS DESIGNED AND GUARDED FOR STEEL BLADES ON NON-FERROUS MATERIAL. DO NOT USE ON STEEL (FERROUS) MATERIAL. !!!!
- Use correct blade for the material. CONSULT DEALER FOR BLADE SPECIFICATIONS.
- Be sure workpiece is securely clamped before cutting. Workpiece movement during cutting WILL result in damaged or broken blades AND possibly serious injury.
- Be sure machine is stable before cutting.
- Be sure workpiece is supported on the infeed and outfeed when cutting long material.
- Get familiar with the machine before cutting. Sample cut with wood or soft materials to get the feel of the machine.
- Be sure blade guard is closed and sawblade is not exposed when the saw head is in the up position !!!!
- To change blade loosen knob on rod on side of guard. Rotate upper half of guard back over top of guard. Loosen spindle nut ( LH thread). Replace blade, rotate ½ guard back over and tighten knob on rod.

#### Safety:

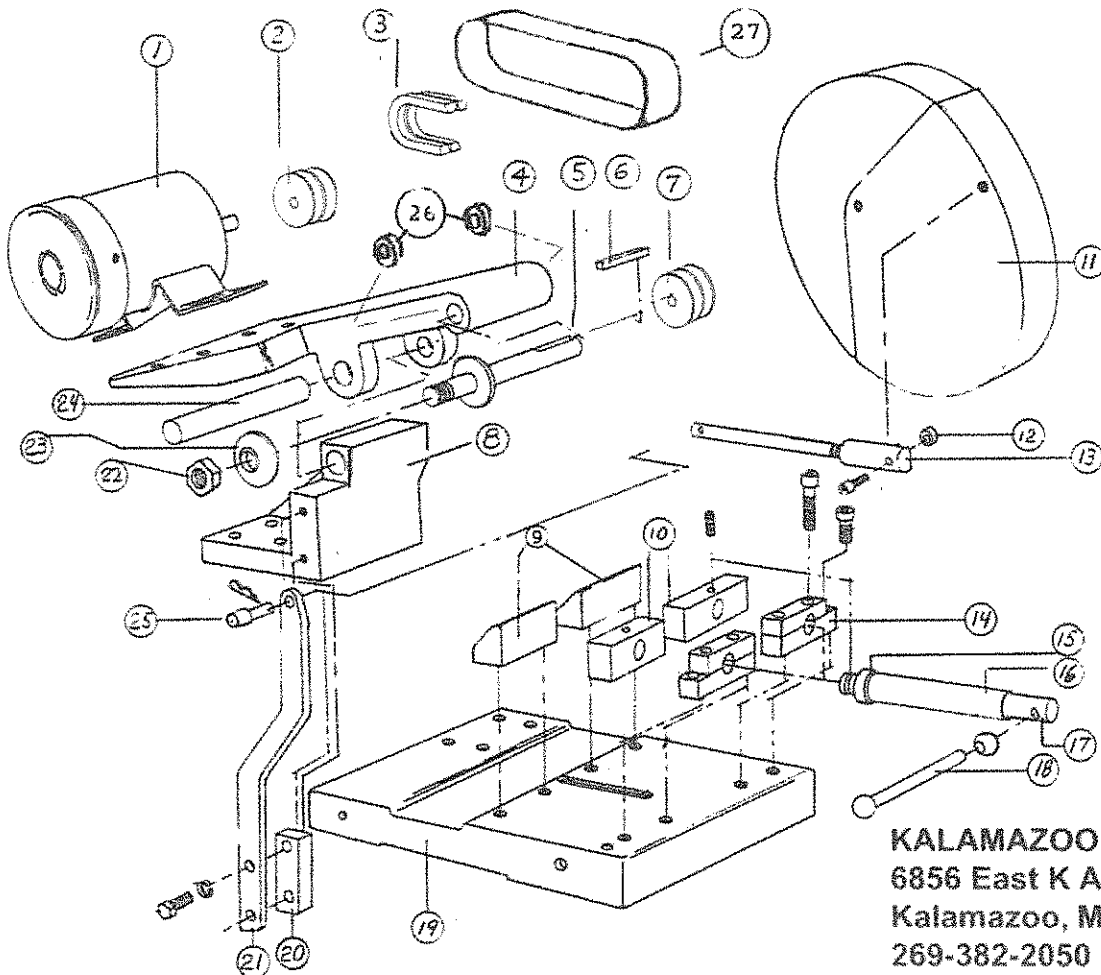
- Always wear safety glasses.
- Never wear gloves!!! Gloves will catch and pull hands into the blade.!!
- Always CLAMP workpiece securely!!
- Never hold workpiece by hand when cutting...USE the vise/clamp!!
- Avoid standing in wet areas when operating unless the electrical system is designed for wet applications.
- Keep hands, feet, long hair away from cutting are
- Keep work area clean.!! Tripping on dropped /cut workpieces can result in falling into the machine!! Collect workpieces and put into a container after each cut.

#### Maintenance:

- Keep V belts tight. ¼" of slack /squeeze is tight enough.
- Spindle bearings are sealed and DO NOT need grease.
- Do not over tighten sawblade. Spindle nut is left hand thread.

# HS-14 series

ITEM	PART NUMBER	DESCRIPTION	QUANTITY
1.	486-001	3 ph. 3450 RPM 5 H.P. MOTOR	1
	486-024	3 ph. 1725 rpm motor (Dry cut DC )	
2.	560-031	DRIVE PULLEY	1
3.	051-009	V-BELT	2
4.	002-002M	SAW ARM	1
5.	701-002 S	SPINDLE W/ Steel FLANGE	1
6.		KEY	1
7.	560-001	SPINDLE PULLEY	1
8.	833-022	TRUNNION	1
9.	431-002	REAR VISE JAW	2
10.	431-020	FRONT VISE JAW	2
11.	342-072	CLAM SHELL GUARD	1
12.		BUSHING	1
13.	151-001	CLEVIS	1
14.	053-032	VISE BLOCK	2
15.	537-020	COLLAR	2
16.	832-020	VISE TUBE	2
17.	696-026	VISE SCREW	2
18.	381-020	HANDLE W/KNOB	2
19.	050-002	BASE	1
20.	699-032	SPACER BLOCK	1
21.	455-007	LEVER, GUARD	1
22.	537-026	SPINDLE NUT	1
23.	292-004	LOOSE FLANGE	1
24.	562-003	TRUNNION PIN	1
25.		CLEVIS PIN	1
26.	044-001	bearings	2
27.	342-004	belt guard	1



KALAMAZOO INDUSTRIES, INC  
 6856 East K Avenue  
 Kalamazoo, MI 49048  
 269-382-2050 PH  
 269-382-0790 FAX  
[www.kalamazooindustries.com](http://www.kalamazooindustries.com)