

**INSTRUCTION
MANUAL
MODEL NO. 2FSM
BELT SANDER**



**KI KALAMAZOO
Industries Inc.**

6856 East K Ave - Kalamazoo, MI 49048-6042
www.kalamazooind.com

PHONE: (269) 382-2050 FAX: (269) 382-0790

WARRANTY

All products are guaranteed for a period of one year to the original purchaser, against defects in material workmanship under normal use. Electric motors are warranted by the motor manufacturer and will be repaired by the nearest motor repair station. If non-repairable, they will be replaced by Kalamazoo Industries. Please call for instructions 269-382-2050.

RETURN POLICY

Authorization must be obtained before returning merchandise. Please call our customer service department for a return authorization number at 269-382-2050. Please include with your return a copy of your invoice or packing slip. Materials must be sent back prepaid. (Unless otherwise indicated). All returns will be subject to a 10% restocking charge. No returns will be accepted after one year of invoice date.

BELT SANDER SAFETY

- READ THE OPERATING INSTRUCTIONS BEFORE RUNNING MACHINE.
- ALWAYS WEAR SAFETY GLASSES OR A FULL FACE SHIELD FOR PROTECTION.
- KEEPS HANDS CLEAR OF THE SANDING AREA.
- NEVER WEAR GLOVES OR LOOSE FITTING CLOTHES WHEN OPERATING THIS MACHINE.
- ALWAYS KEEP HAIR TIED BACK OR COVERED.
- LET MACHINE ROTATION COME TO A FULL STOP BEFORE CHANGING BELT.
- KEEP SAFETY GUARDS IN PLACE. DO NOT ALTER GUARDS OR MACHINE IN ANY WAY. ANY ALTERATIONS TO GUARDS OR MACHINE COULD CAUSE SERIOUS INJURY.
- ALL BELT SANDERS SHOULD BE OPERATED IN A WELL-VENTILATED AREA. THE DUST CREATED WHEN SOME MATERIALS ARE SANDED CAN BE HARMFUL. DUST MASKS ARE RECOMMENDED AS A PRACTICAL MEANS OF MINIMIZING DUST INHALATION. FUMES FROM OTHER SOURCES CAN ALSO CAUSE FIRES WHEN IN CONTACT WITH SANDING SPARKS.
- SPARKS CREATED BY SANDING SHOULD BE DIRECTED DOWNWARD AND AWAY FROM THE FACE AND BODY. DO NOT GRIND NEAR FLAMMABLE MATERIAL.
- ELECTRIC SANDING MACHINES ARE NOT INTENDED FOR USE IN OR NEAR WATER. THIS INCLUDES AN OPERATOR STANDING ON A WET FLOOR OR WORKING AROUND CONTAINERS OF WATER OR OTHER CONDUCTIVE LIQUIDS.

KALAMAZOO INDUSTRIES, INC.
6856 East K Avenue
Kalamazoo, MI 49048
269-382-2050 PH
269-382-0790 FAX
www.kalamazooindustries.com



Made in USA

WARNING!

TO REDUCE THE RISK OF FIRE OR SHOCK HAZARD,
DO NOT EXPOSE THIS EQUIPMENT TO RAIN, ANY LIQUID OR MOISTURE.

INSPECTION

If these goods are damaged in transit, the DELIVERING TRANSPORTATION COMPANY is required by law to make notation of damages on the freight bill. If in your opinion, there may be concealed damage, they are required to make an inspection after goods are unpacked. Transportation rates are made in proportion to damage. Therefore, the carrier and NOT the shipper should be charged with any loss or damage. Any claim should be filed with the delivering Transportation Company. PLEASE DO NOT RETURN GOODS TO US WITHOUT OUR RGA NUMBER AND SHIPPING INSTRUCTIONS.

See back page for Return Policy and Warranty.

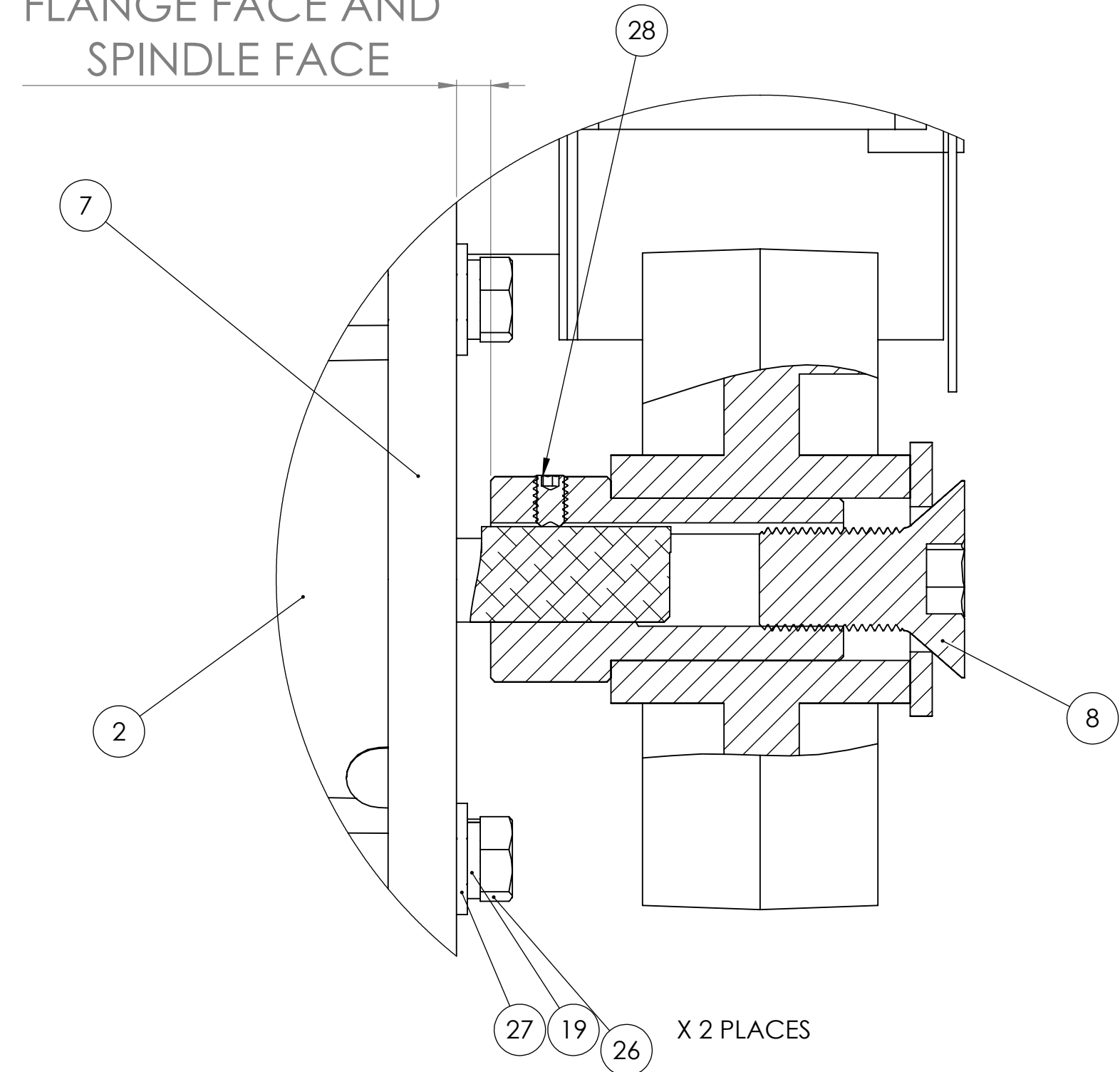
IMPORTANT

Read Operating Instructions before using this equipment.

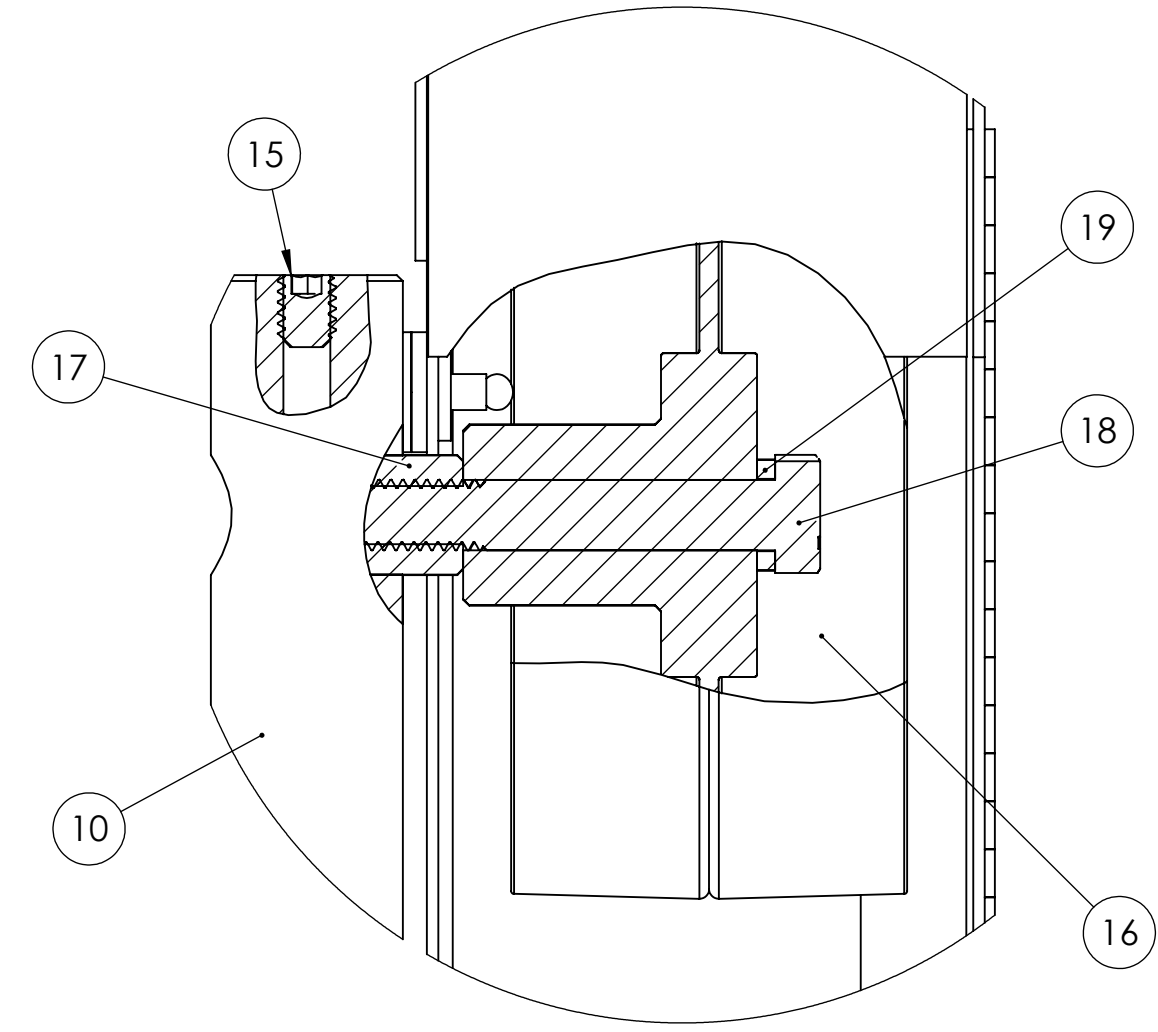
OPERATING INSTRUCTIONS

1. **Disconnect power** before making any adjustments.
2. Abrasive belt rotation is counter-clockwise. If the abrasive belt is lap spliced be sure of correct rotation. Butt spliced belts are bi-directional.
3. Belt tension is pre-set with internal spring (10). No belt tension adjustment is required.
4. To change belt **disconnect power**, loosen tracking knob (9), open OSHA guard (7), Compress spring belt tension by pushing down on idler Shaft (2). Remove belt and replace with new belt.
5. Belt tracking- With power disconnected rotate belt by hand to center or "track" sanding belt. Rotating knob (9) and collar (11) Left or right turns idler shaft (2) to "track" the belt. Re-lock knob (9) to lock in belt tracking. Close OSHA guard (7).

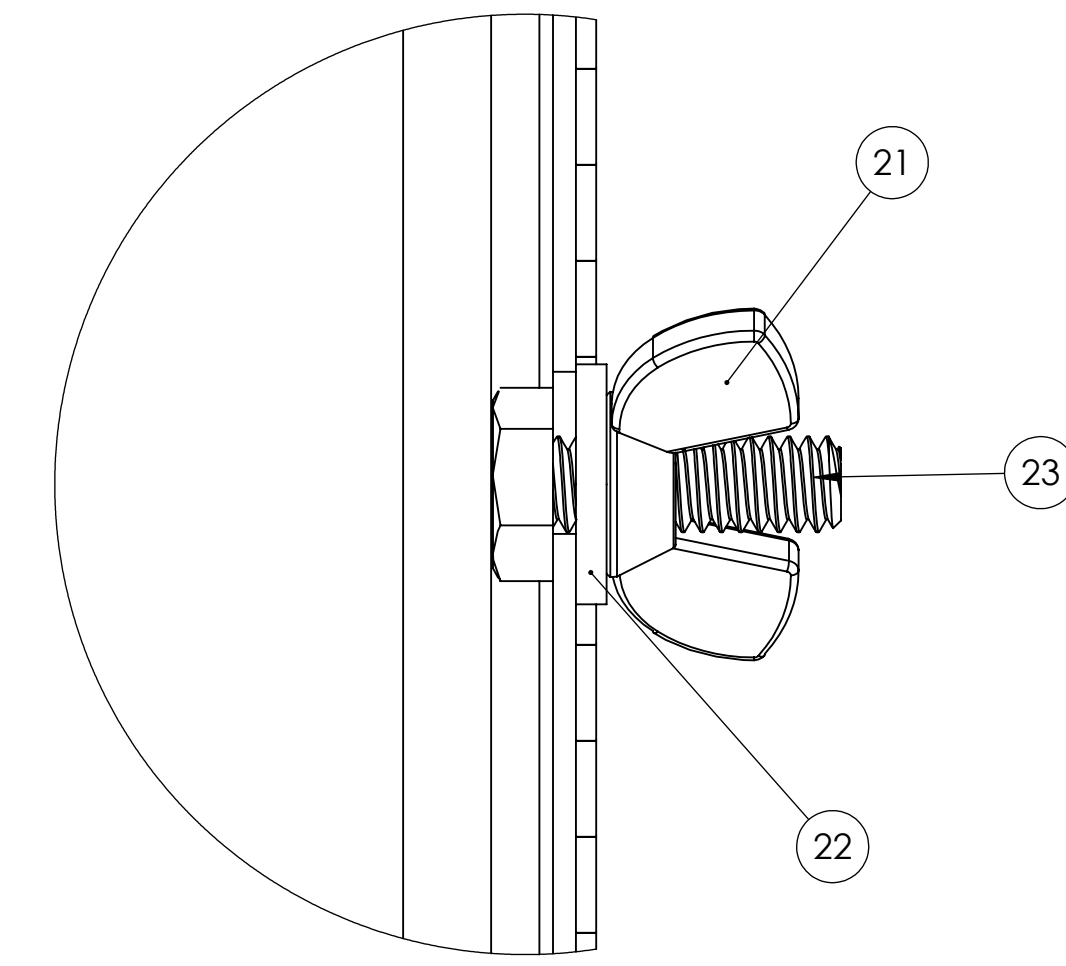
0.25 BETWEEN
FLANGE FACE AND
SPINDLE FACE



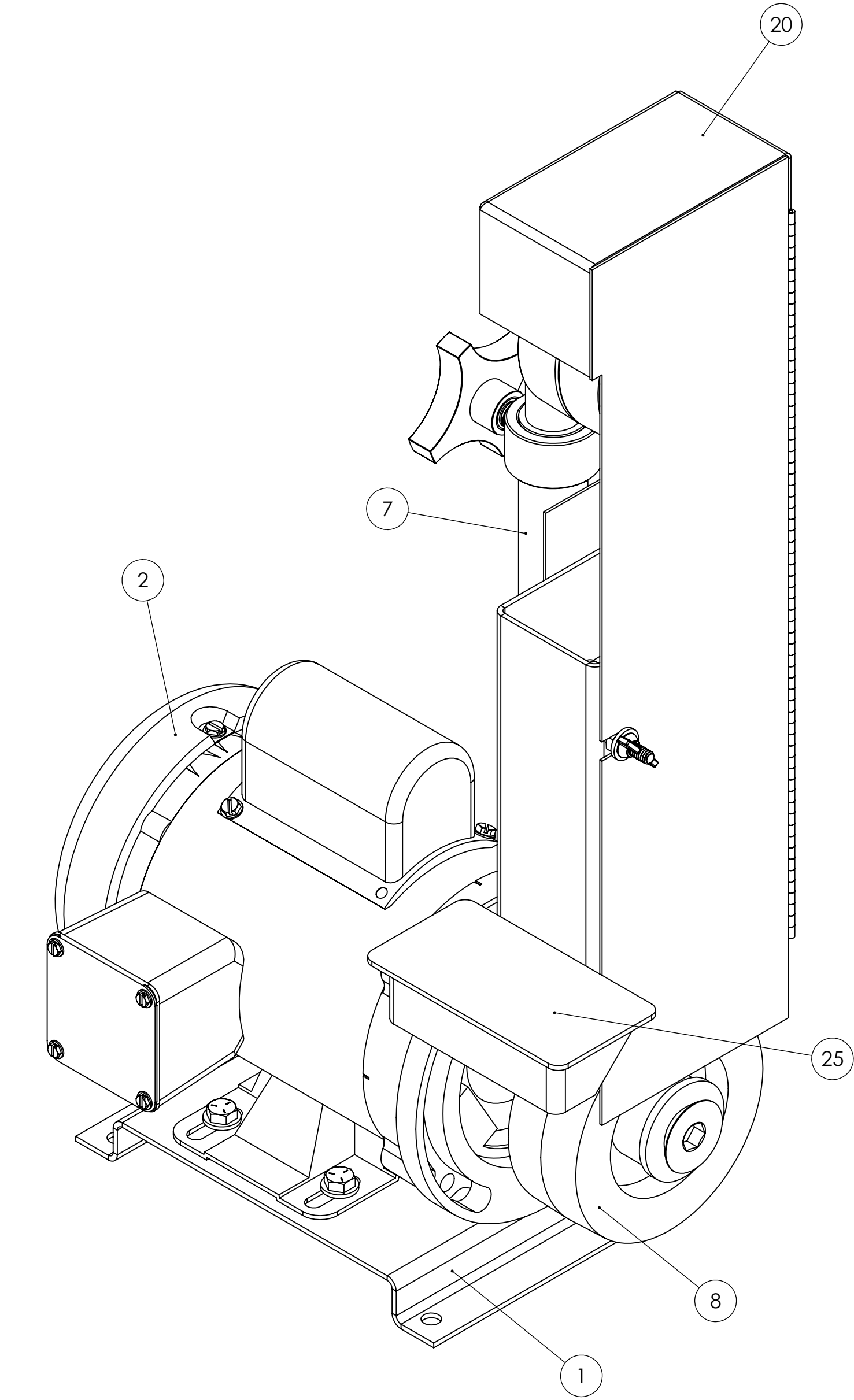
DETAIL A
SCALE 1 : 1
DRIVE PULLEY DETAIL



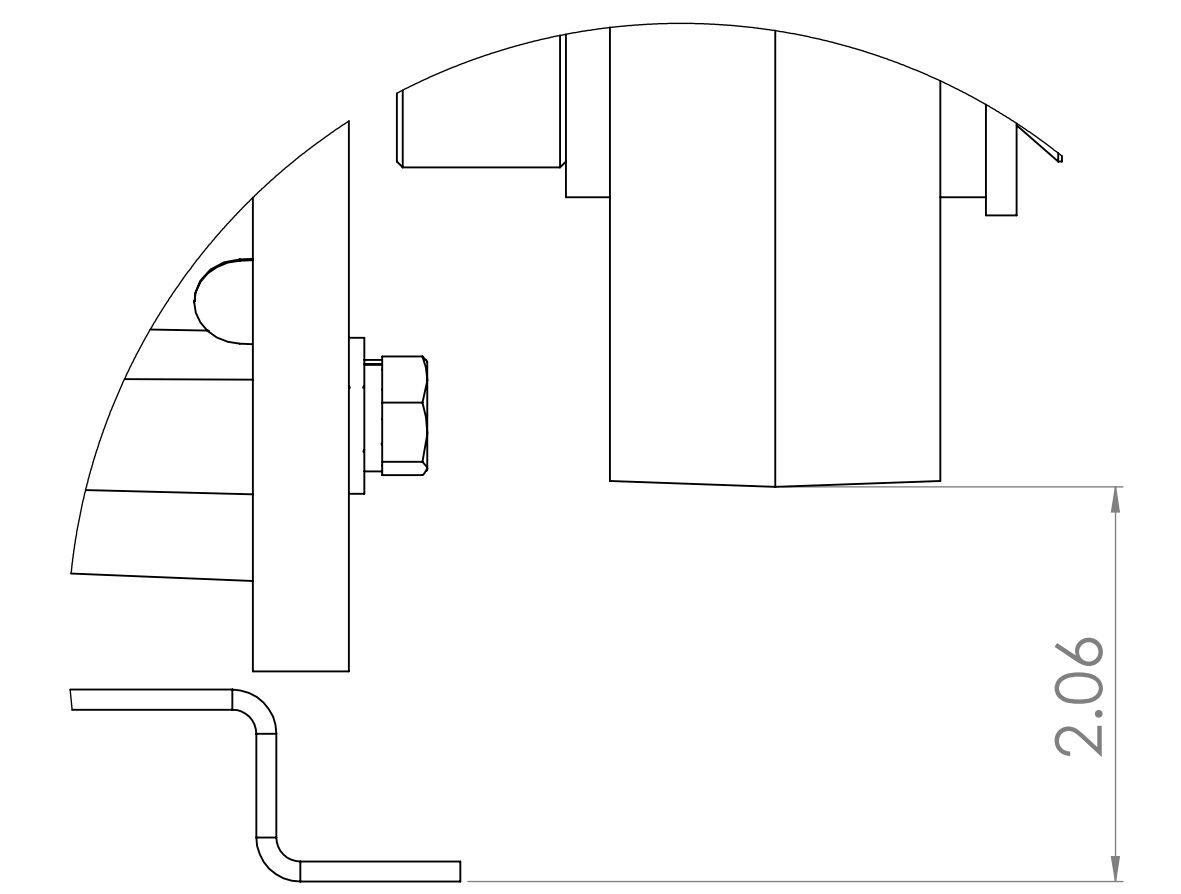
DETAIL C
SCALE 1 : 1
IDLER PULLEY DETAIL



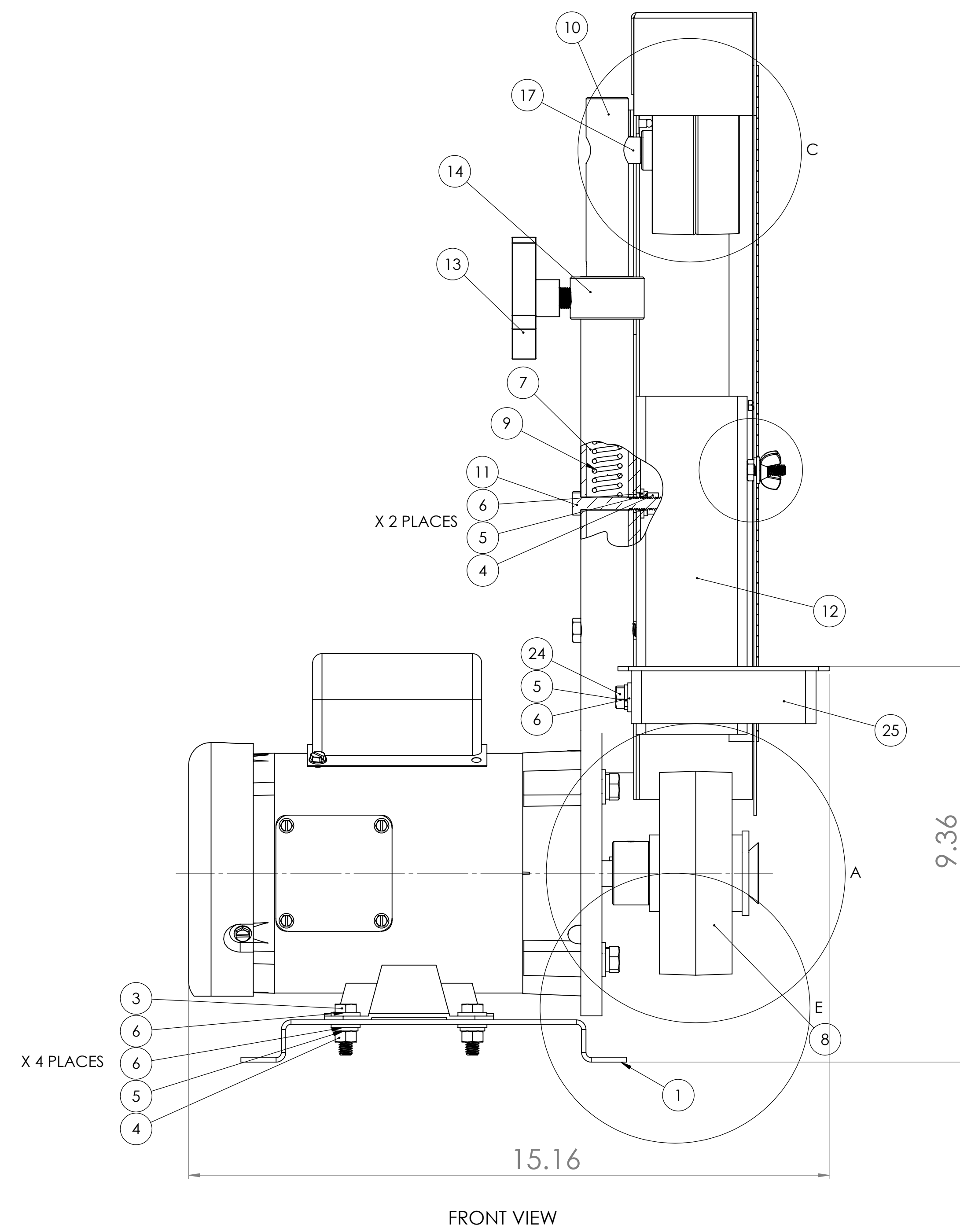
DETAIL B
SCALE 2 : 1
OSHA GUARD LATCH



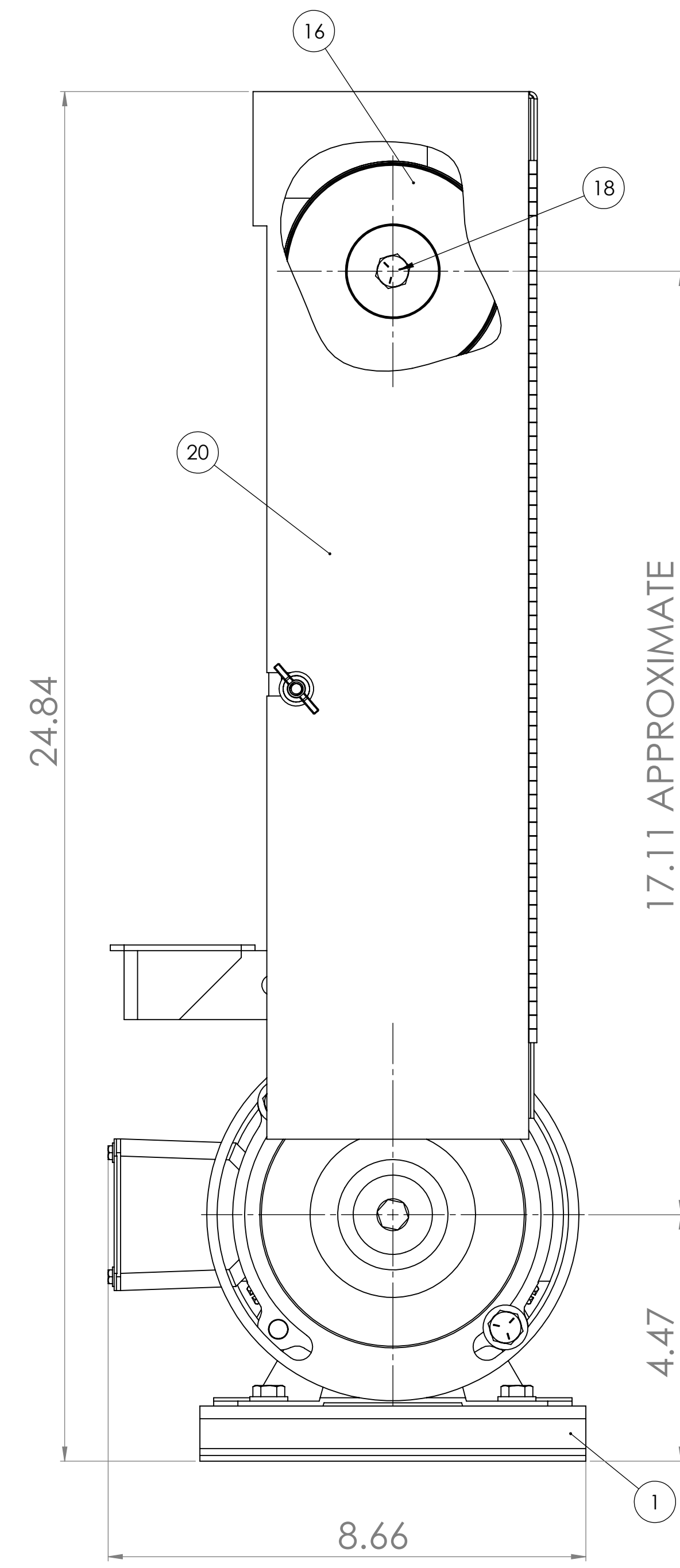
| ITEM NO. | PART NUMBER | DESCRIPTION | QTY. |
|----------|-------------|--|------|
| 1 | 829-006 | MOTOR BASE WITH TUBE SUPPORT FOR 2FSM | 1 |
| 2 | 484-022 | 1/2HP, 1PH, 3450RPM, 56F, 115/230 FOR S612V VAC MOTOR CL3503 102836.00 | 1 |
| 3 | HHC5031016 | 5/16-18 X 1 HHCS GR5 Z | 4 |
| 4 | FHN5031 | 5/16-18 FHN GR5 ZINC | 6 |
| 5 | SLW2031 | 5/16 SPLIT L/W Z | 7 |
| 6 | UFW2031 | 5/16 USS F/W Z | 11 |
| 7 | 832-023 | TUBE AND RING ASSEMBLY FOR 2FSM AND DS10-2M | 1 |
| 8 | 936-007 | DRIVE PULLEY WITH HUB FOR 2FSM AND DS10-2M NEW STYLE | 1 |
| 9 | 697-013 | TENSION SPRING FOR 2FS, 2FS72, 2FSM, BG142, 2FS72M, K12-14B | 1 |
| 10 | 645-008 | TENSION ROD FOR 2FS, 2FSM, 2FS72, 2SK7 SANDERS | 1 |
| 11 | HHC5031032 | 5/16-18 X 2 HHCS GR5 Z | 2 |
| 12 | 550-006 | PLATEN FOR 2FSM AND S2 KIT | 1 |
| 13 | 441-011 | TRACKING KNOB FOR 2FS, 2FS72, 2FSM, 2SK7 SANDERS | 1 |
| 14 | 123-004 | TRACKING COLLAR FOR 2FS, 2FS72, 2FSM, 2SK7, BG142 | 1 |
| 15 | SSKA031006 | 5/16-18 X 3/8 SOC SET KNURL PT. | 1 |
| 16 | 936-030 | STEEL IDLER PULLEY, NEW STYLE FOR 2FS, 2FSM, 2SK7 | 1 |
| 17 | 004-004 | ADAPTOR FOR 936-003 IDLER PULLEY | 1 |
| 18 | HHC5037040 | 3/8-16 X 2-1/2 HHCS GR5 Z | 1 |
| 19 | SLW2037 | 3/8 SPLIT L/W Z | 3 |
| 20 | 342-018 | GUARD, HINGED OSHA FOR 2FS, 2FSM, 2SK7 SANDERS | 1 |
| 21 | WGN2025 | 1/4-20 FORGED WING NUT Z | 1 |
| 22 | UFW2025 | 1/4 USS F/W Z | 1 |
| 23 | HHC5025012 | 1/4-20 X 3/4 HHCS GR5 Z | 1 |
| 24 | HHC5031012 | 5/16-18 X 3/4 HHCS GR5 Z | 1 |
| 25 | 829-004 | WORK TABLE FOR 2", 4", DS10-4 SANDERS | 1 |
| 26 | HHC5037020 | 3/8-16 X 1-1/4 HHCS GR5 Z | 2 |
| 27 | UFW2037 | 3/8 USS F/W Z | 2 |
| 28 | SSKA025006 | 1/4-20 X 3/8 SOC SET KNURL PT. | 1 |



DETAIL E
SCALE 1 : 1

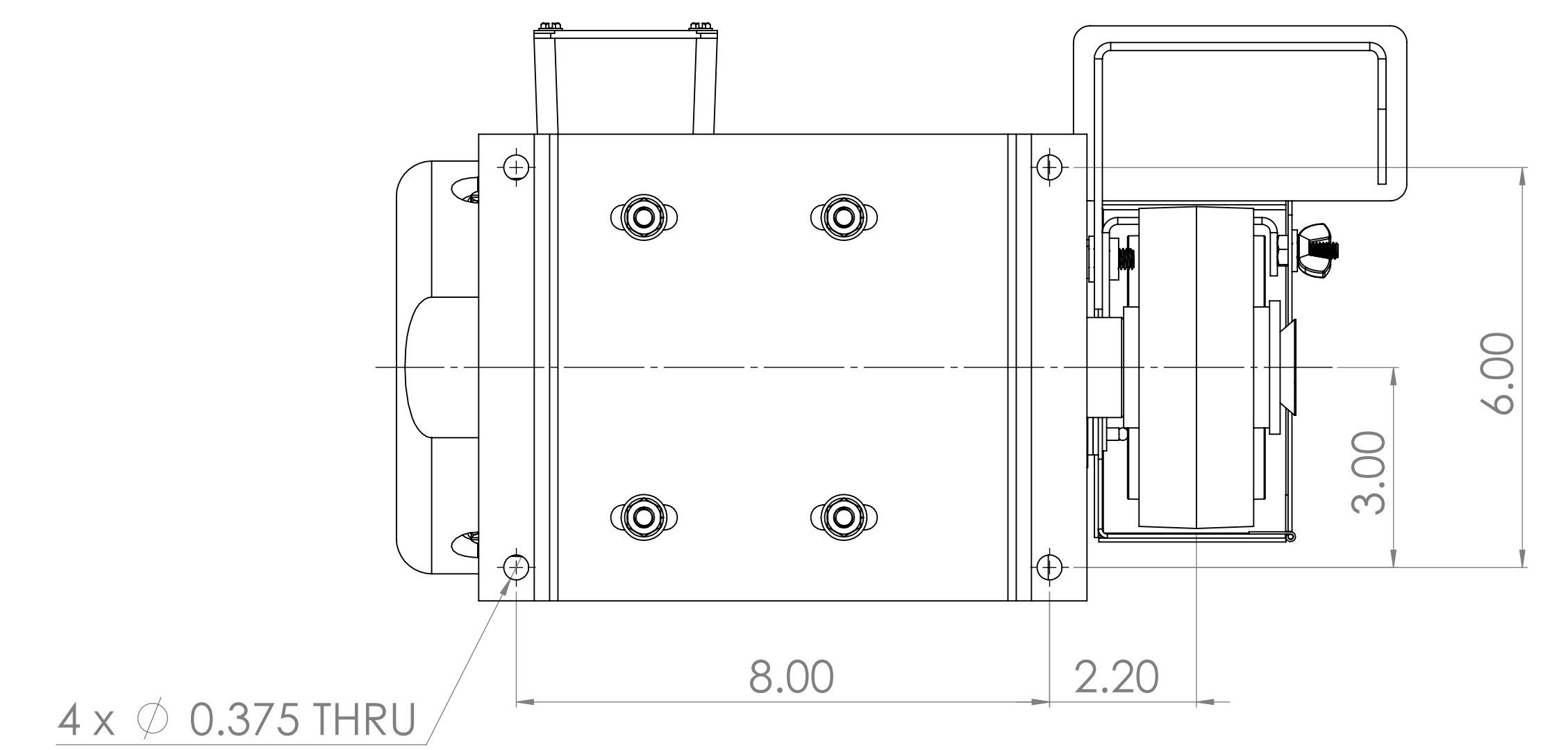


FRONT VIEW



RIGHT HAND VIEW

MOTOR CENTERLINE DISTANCE



MOUNTING HOLE PATTERN

UNLESS OTHERWISE SPECIFIED:
DIMENSIONS ARE IN INCHES
TOLERANCES:
FRACTIONS ± .005
DECIMALS ± .001
THREE PLACE DECIMAL ± .001

PROPRIETARY/CONFIDENTIAL
THIS DRAWING IS THE PROPERTY OF
KALAMAZOO TOOL WORKS, INC.
REPRODUCTION IN PART OR AS A WHOLE
WITHOUT THE WRITTEN PERMISSION OF
KALAMAZOO TOOL WORKS, INC. IS
PROHIBITED.

| APP. NAME | DATE | CHKD. NAME | DATE |
|-----------|------|------------|------|
| | | | |

TITLE: **2FSM ASSEMBLY**

SIZE: DWG. NO. **E** 2FSM ASSEMBLY REV
SCALE: 1:2 WEIGHT: SHEET 1 OF 1